

Climate Action for Sustainable Rice Landscapes

COP24, Katowice, 10 December 2018

*Pascal Martinez
Sr. Environmental Specialist*



GLOBAL ENVIRONMENT FACILITY
INVESTING IN OUR PLANET



What is the Global Environment Facility (GEF) ?

1- Financial Mechanism of the Environmental Multilateral Agreements



2- Global Partnership

183 countries

GEF Focal Point



18 Implementing Agencies



+ Private sector, Academic institutions...

3- Massive Track record of projects

- GEF created in **1991**
- **Over \$17.9 billion in grants** + \$93.2 billion in co-financing
- More than **4500 projects** in **170 countries**.



GLOBAL ENVIRONMENT FACILITY
INVESTING IN OUR PLANET

New GEF-7 cycle beginning now!

- GEF 7 commenced on **July 1, 2018**
- The total envelope approved is **4.1 Billion USD**.

Country Driven Process

\$\$\$=Country allocation

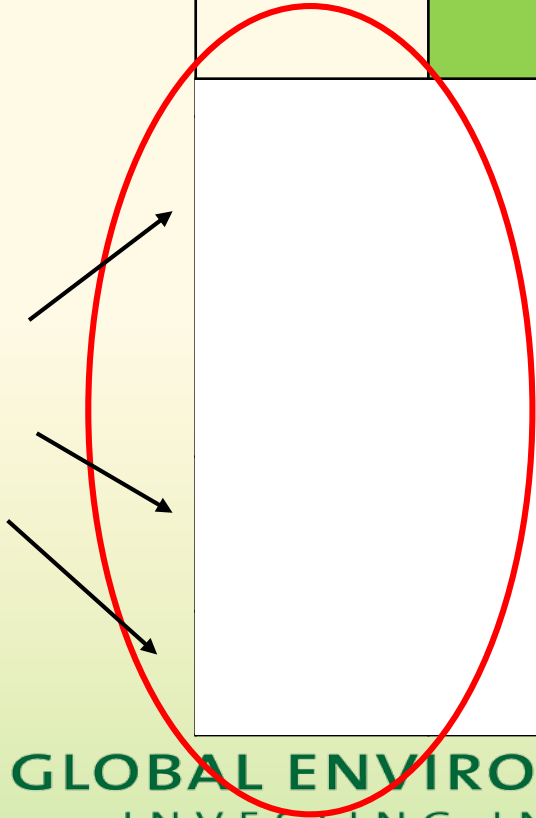


GLOBAL ENVIRONMENT FACILITY
INVESTING IN OUR PLANET

GEF7 Programming Framework

	Biodiversity Focal Area	Climate Change Focal Area	Land Degradation Focal Area	International Waters Focal Area	Chemicals and Waste Focal Area
Programming Areas to be addressed through Focal Area Investments					
	<ul style="list-style-type: none"> Biodiversity mainstreaming Wildlife for sustainable development Natural capital Agrobiodiversity Inclusive conservation Invasive species Protected areas Preventing species extinction Biosafety ABS Enabling Activities 	<ul style="list-style-type: none"> CBIT Enabling Activities Technology Transfer NDC preparation and implementation Sustainable energy 	<ul style="list-style-type: none"> Creating Enabling Environments for LDN Enabling Activities LDN Target setting 	<ul style="list-style-type: none"> Strengthening Blue Economy Opportunities Improve Governance in ABNJs Enhancing Water Security in Freshwater Ecosystems 	<ul style="list-style-type: none"> Industrial Chemicals Agricultural Chemicals LDC/SIDS support Enabling Activities

3 Impacts Programs



+ 50 % \$ incentive
5 Focal Areas



GLOBAL ENVIRONMENT FACILITY
INVESTING IN OUR PLANET

Overall GEF 7 Architecture for Rice landscapes

- GEF 7 results will be achieved through integrated programming that seeks to catalyze or amplify systems change.
- Rice landscapes activities can be implemented through 3 programming ways:
 - 1- Focal Areas
 - 2- Programmatic approach
 - 3- Food Systems, Land Use and Restoration Impact Program (“FOLUR’)
- GEF 7 Results will be tracked through 11 Core Indicators



GLOBAL ENVIRONMENT FACILITY
INVESTING IN OUR PLANET

Programmatic Approach

- Composition: one Program Framework Document (PFD) + Child Projects
- Focus: thematic or geographical focus
- One lead agency for the program umbrella and other agencies for the child projects
- Modality: initiated by a country, a GEF Agency or the collaborative effort of both
- Common objective, whose anticipated results are more than the sum of its components
- Goal: achieving large-scale and sustained impact on the global environment through integrating global environmental objectives into national or regional strategies and plans using partnerships



GLOBAL ENVIRONMENT FACILITY
INVESTING IN OUR PLANET

Food Systems, Land Use and Restoration Impact Program “FOLUR”

Vision:

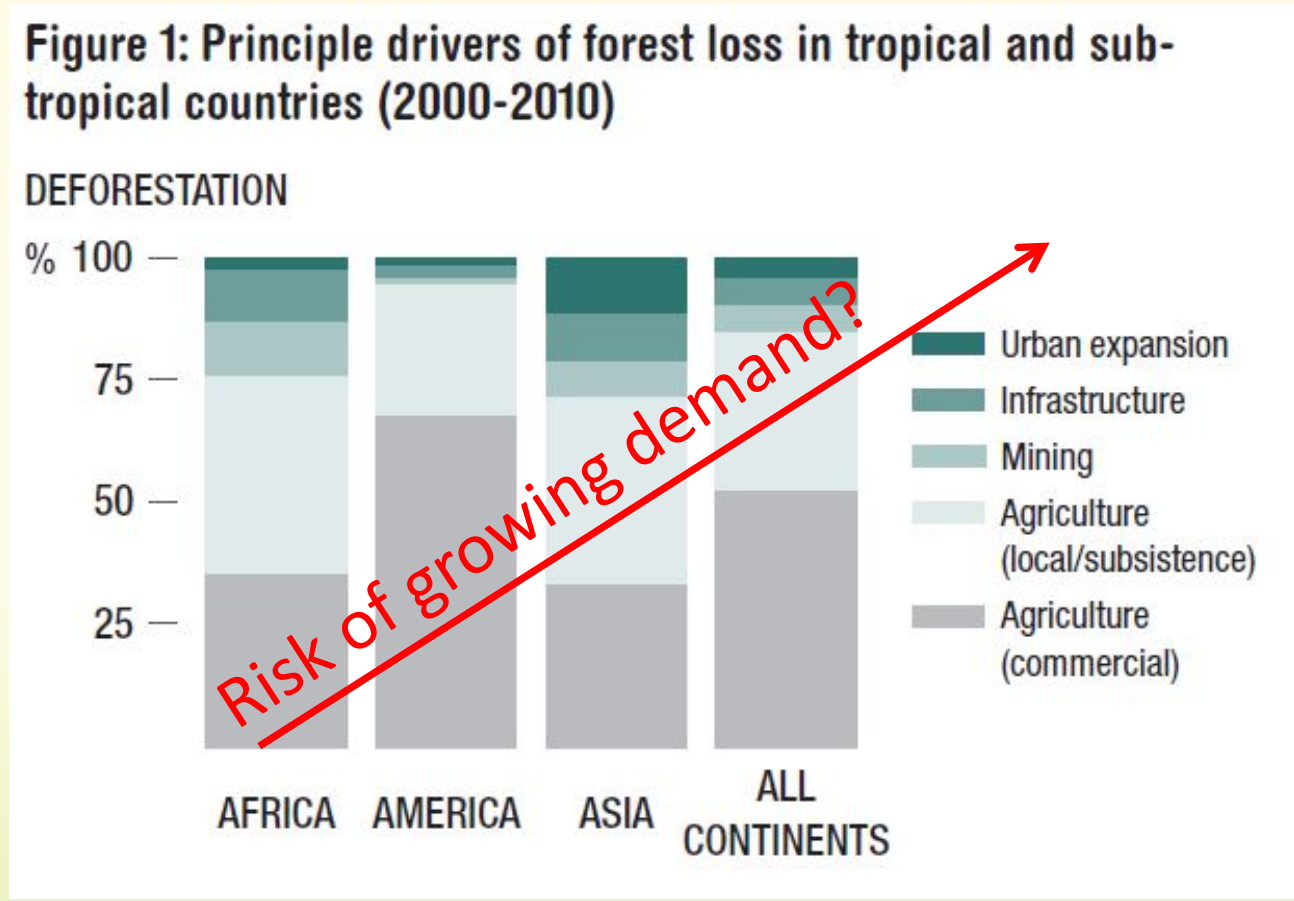
Sustainable integrated landscapes
and efficient food value/supply chains



GLOBAL ENVIRONMENT FACILITY
INVESTING IN OUR PLANET

Causes of Deforestation: ~80% Food Systems

Forests hosts
80% terrestrial
biodiversity



Food systems
1/4 of GHG emission

Source: McFarland et al, 2015, ODI,



GLOBAL ENVIRONMENT FACILITY
INVESTING IN OUR PLANET

What needs to happen?

- Develop efficient and effective food value chains
- Remove deforestation from commodity supply chains
- Expand restoration of degraded lands
- Provide Global Environment Benefits

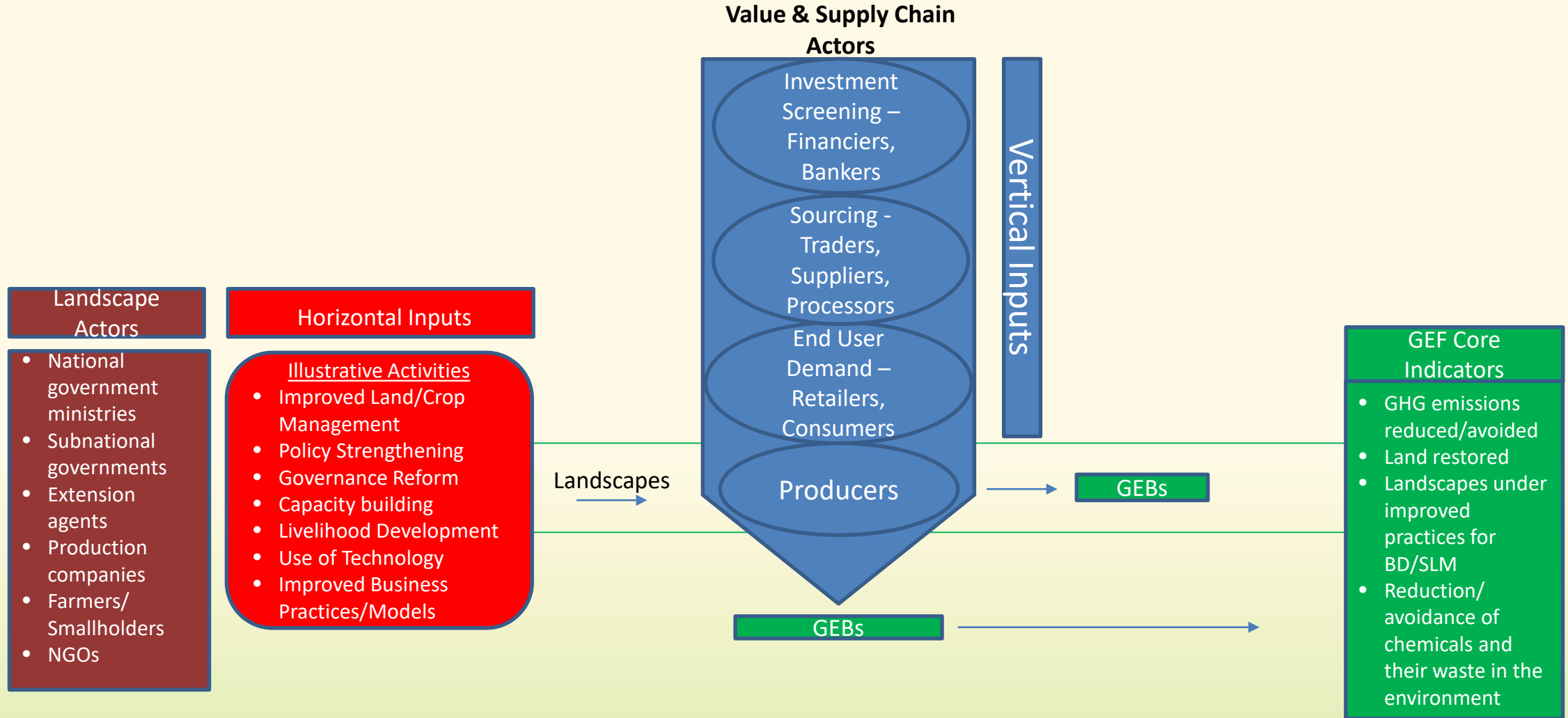


Underpinned by: **Comprehensive land use planning** that reconciles competing land use, considers trade-offs, and harnesses synergy.



GLOBAL ENVIRONMENT FACILITY
INVESTING IN OUR PLANET

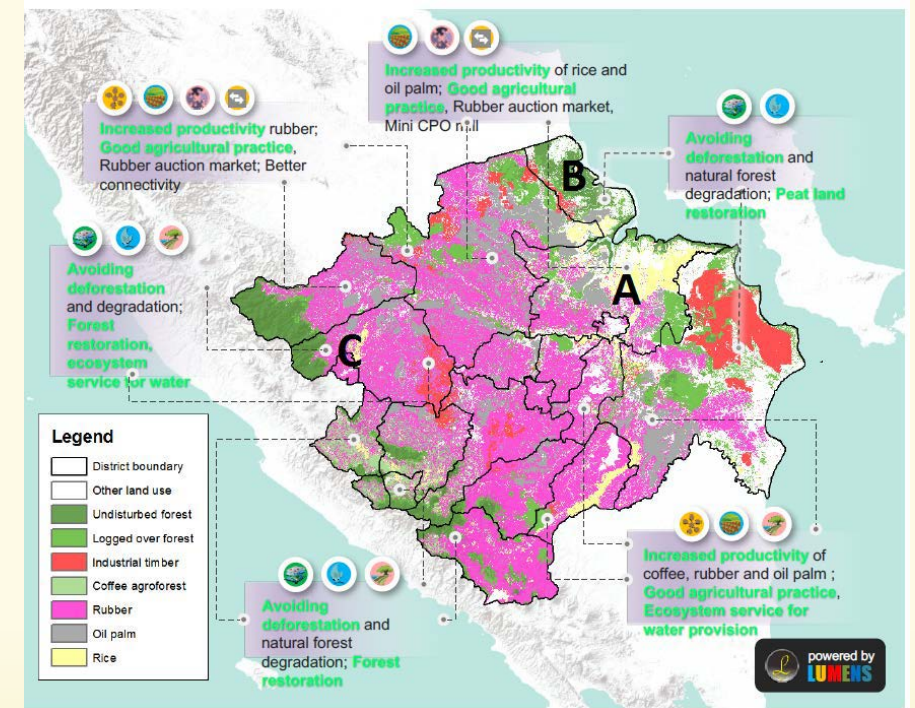
Program Design Elements



The target: Sustainable Integrated Landscapes

Spatially explicit geographies where food and ecological systems are integrated, requiring implementation at scale of a suite of related strategies and interventions, and demonstrating the following characteristics:

- **Evidence of environmental threat** from commodity driven deforestation or unsustainable agricultural systems
- **Potential for applying a comprehensive land use approach** linking production, biodiversity conservation, and restoration at scale
- **Willingness to work across national borders** for supply chain needs and other market driven demands.



Focus on **Comprehensive Land Use Planning**

- To balance demands for increased food production with potential for harnessing ecosystem services
- Improve targeting of landscapes for delivering integrated solutions at scale



GLOBAL ENVIRONMENT FACILITY
INVESTING IN OUR PLANET

The Entry Points for Countries

- **Globally important tropical forest country and major producer of a global commodity** (i.e. oil palm, beef, soy, coffee, and cocoa) + Commitment to taking deforestation out of the supply chain, restore degraded lands, protect high value BD and CS forests

OR

- **Globally important food crop (e.g. rice, wheat, maize, etc.) or livestock production systems** + Commitment to increase the sustainability, efficiency and effectiveness in the food system, restore degraded lands for production and halt encroachment into intact ecosystems

PLUS

- The agriculture and/or food sector identified by the country as a major target for delivering global environmental benefits linked to the MEAs that GEF serves (for CCM, BD, SLM and C&W)
- The country has established targets for landscape restoration, including commitments under an existing global initiatives (Bonn Challenge, AFR100, 20X20, etc.)
- Countries demonstrate alignment or consistency with relevant platforms focused on addressing long-term sustainability of the agricultural commodities and food crops (such as the Tropical Forest Alliance, the Consumer Goods Forum, and the Good Growth Partnership)



GLOBAL ENVIRONMENT FACILITY
INVESTING IN OUR PLANET

Financing Criteria

GEF financing to projects will be prioritized by their:

1. High potential/ability to generate multiple GEBs (GHG, BD, LD) and the significance that these represent in terms of contribution to delivery of GEF core indicator targets
2. Contribution to wider national/sub-national strategies and alignment with existing comprehensive land use plans
3. Public sector support (policy and institutional) and demonstrated political will of key government actors
4. Private sector involvement (markets and financing)
5. Potential for achieving large-scale change
6. Ability to catalyze innovations generated in technology, policy, governance, financing, and business models.



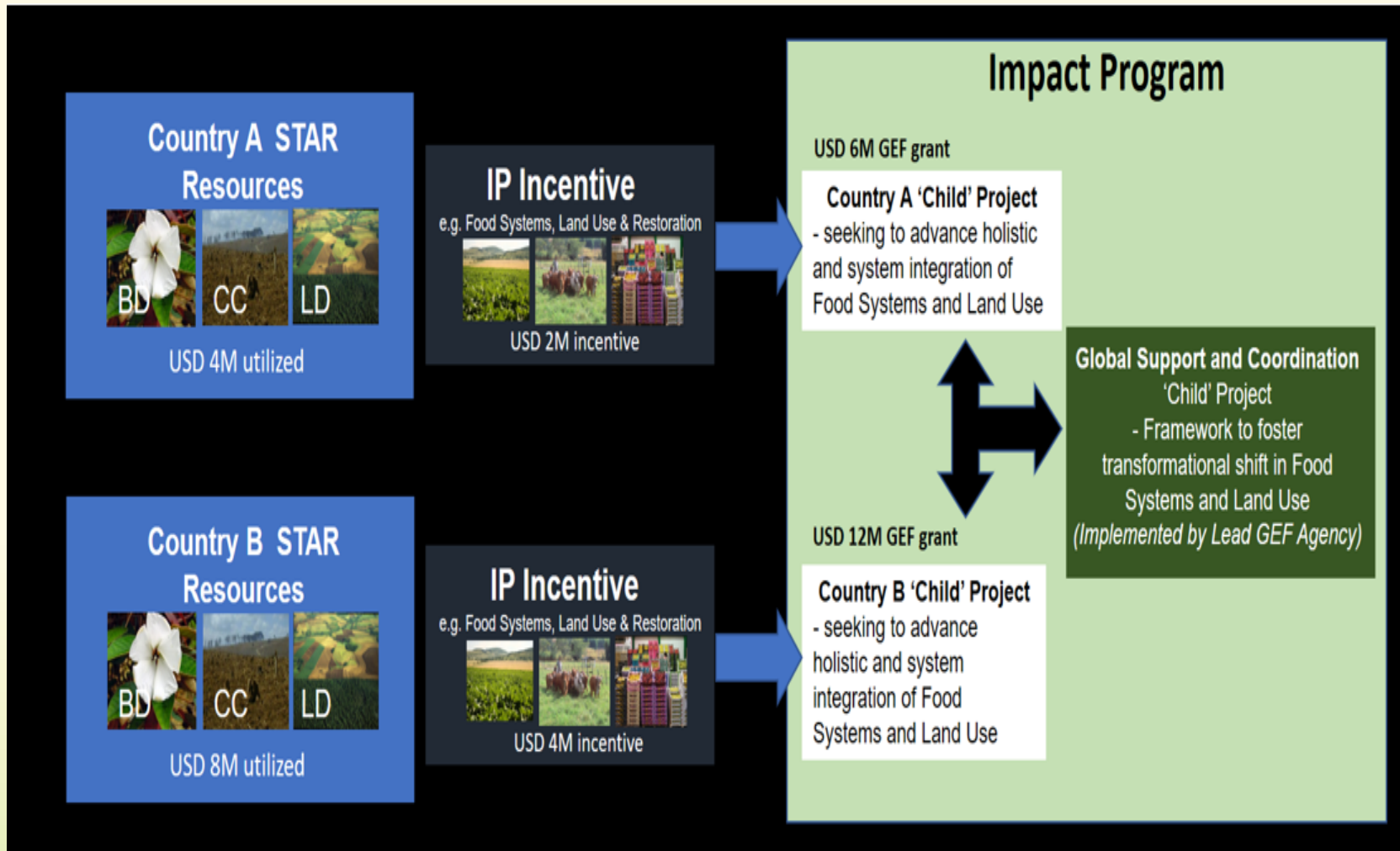
GLOBAL ENVIRONMENT FACILITY
INVESTING IN OUR PLANET

Common elements of the FOLUR and SFM/Dylands IPs...



GLOBAL ENVIRONMENT FACILITY
INVESTING IN OUR PLANET

The Incentive: Resource Allocation to Impact Programs



FOLUR Resources

STAR	265
Matching incentive	133
Global support	32
Total	430

(million \$)

SFM Drylands

STAR	64
Matching incentive	32
Global support	9
Total	105

(million \$)

**Co-financing
1/7**



GLOBAL ENVIRONMENT FACILITY
INVESTING IN OUR PLANET

Key Elements of Impact Program Guidance

- Underlying crucial rationale of the IPs: Deliver transformational change in an integrated manner across the focal areas
- Only countries accepted to join the programs will be able to design IP child projects
- Lead Agencies: FOLUR => World Bank

NB: Lead agencies will facilitate the process, but every country can choose their agency (All GEF agencies are welcome).

- Maximum results prioritized: Because the incentive funds are limited, resource programming for each of the IPs will be prioritized to maximize potential for achieving the GEF-7 targets.



GLOBAL ENVIRONMENT FACILITY
INVESTING IN OUR PLANET

Key Elements of Impact Program Guidance

- Results oriented assessment: The GEF-7 Results Framework and proposed GEB targets approved by council will serve as the basis for assessing potential contributions by country
- Minimum of USD 4 million from STAR: Required for any country to trigger the incentive mechanism to ensure significant results coming from IPs
- Private sector engagement: Potential to influence sustainable businesses and to catalyze investment opportunities that can scale-up innovative technologies
- Gender integration: All GEF investments are required to address gender equality as a priority.
- Commitment with the IP Regional/Global Platform: countries must commit to work closely with the global/regional technical assistance and knowledge management component.



GLOBAL ENVIRONMENT FACILITY
INVESTING IN OUR PLANET

Timeline and Process for Operationalizing the Impact Programs

- STAR Allocations published on July 1st
- 30 August 2018: guidance note on programming IPs
- **15 November 2018**: release of a call and template for “Expression of Interests” (EOIs) for participation in the IPs
- **31 January 2019**: Initial deadline for submission of EOIs
- January-February 2019: Selection of an initial batch of submissions for each of the IPs
- **June 2019 Council meeting**: Inclusion in the Work Program (if resources allows)
- During 2019: additional deadline for new EOIs submission



Thank you for your attention!

Questions?

Main references:

GEF-7 Programming directions:

doc [GEF/R.7/19](#)



**IP guidance note sent to countries and
GEF Implementing Agencies**



GLOBAL ENVIRONMENT FACILITY
INVESTING IN OUR PLANET