



GEF CEO and Chairperson Carlos Manuel Rodriguez

1st meeting
GEF Programming Strategy on
Climate Change Strategy for LDCF and SCCF
And Operational Improvements
October 19, 2021

Unprecedented Scale of Climate Change

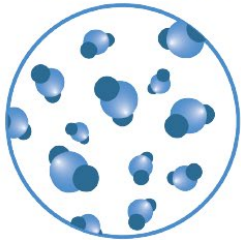
IPCC:

- **Changing Climate:** highest CO₂ concentrations, fastest sea level rise, lowest level of arctic sea ice, unprecedented glaciers retreat
- **Negative impacts:** extreme heat, heavy rainfall, drought, fire, and ocean warming/acidification

SIXTH ASSESSMENT REPORT
Working Group I – The Physical Science Basis

ipcc
INTERGOVERNMENTAL PANEL ON climate change
WHO UNEP

CO₂
concentration



Highest
in at least
2 million years

Sea level
rise



Fastest rates
in at least
3000 years

Arctic sea ice
area



Lowest level
in at least
1000 years

Glaciers
retreat



Unprecedented
in at least
2000 years

SIXTH ASSESSMENT REPORT
Working Group I – The Physical Science Basis

ipcc
INTERGOVERNMENTAL PANEL ON climate change
WHO UNEP



Extreme heat
More frequent
More intense



Heavy rainfall
More frequent
More intense



Drought
Increase in some
regions



Fire weather
More frequent



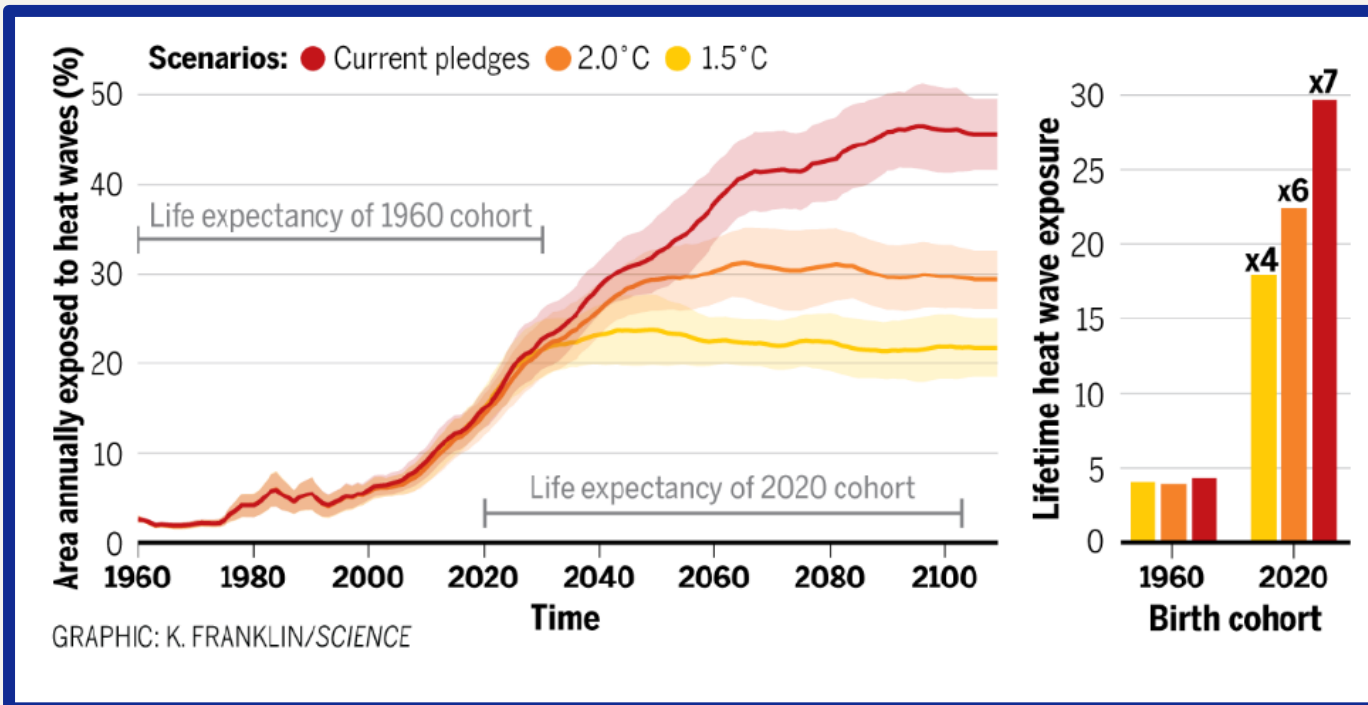
Ocean
Warming
Acidifying
Losing oxygen

Photo Credits from left: 1. Luiz Guimaraes 2. Jonathan Ford 3. Peter Burdon 4. Ben Kuo 5. NOAA

Source: Press conference, IPCC Working Group I Contribution to the Sixth Assessment Report (2021)

Unprecedented Climate Impact

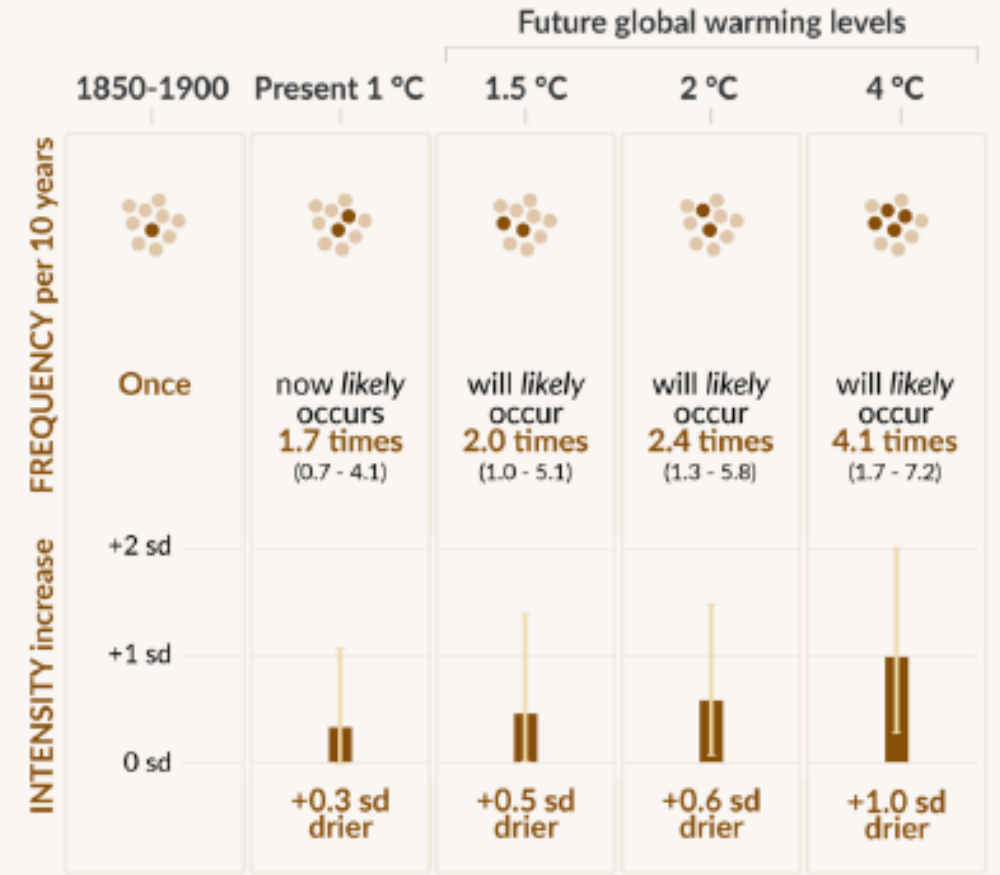
- More severe and frequent negative impacts at higher temperature scenarios
- Serious intergenerational implications
- Heightened need for climate change adaptation



W. Thiery et al., 2021, *Intergenerational Inequities in Exposure to Climate Extremes*

Agricultural & ecological droughts in drying regions 10-year event

Frequency and increase in intensity of an agricultural and ecological drought event that occurred once in 10 years on average across drying regions in a climate without human influence



IPCC, 2021, Working Group I Contribution to the Sixth Assessment Report

GEF-8: Facilitating Transformational Climate Adaptation

Science



Need for transformation



Whole of society approach



Urgent adaptation priorities

Approaches



Ecosystems and nature-based climate adaptation solutions



regional approaches focusing on rural, urban and coastal areas for climate resilient infrastructure and services



landscape and value-chain based approaches for food and water security

Context



Partnership and innovation



Local-national-regional scope



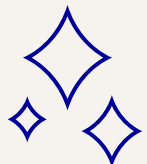
Resilient livelihoods, healthy ecosystems and people

Evolution of LDCF and SCCF

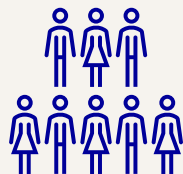
Strategic Shift towards:



Integration



Innovation and private sector engagement



Inclusion and participatory approach

Value addition of LDCF and SCCF

- 1** LDCF: **only fund** focusing on LDCs
Embraced by LDCs
Implementation experience in all LDCs
- 2** Opportunities for **targeted support**
100% of resources to climate adaptation benefits
- 3** **High relevance** to UNFCCC COP guidance
LDCF's work inherently **aligned with the Paris Agreement**
- 4** Agility – Enable **quick action**
- 5** **Track record** of systemic, integrated support, **beyond sectors**
- 6** **Partnership** with GCF for complementarity and coordination
- 7** **High standards** of transparency and accountability
Subject to **independent evaluations**
- 8** **Very high performance** of the active SCCF portfolio

Long-term Vision on Complementarity



ELEMENTS FOR ADAPTATION

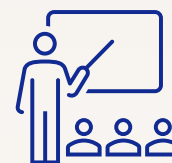
**Collaborative
and coordinated
programming**



**Support major initiatives
with GCF**

Include LDCF/SCCF in
national investment planning

**Sharing information,
lessons learned and
knowledge**



Lessons learned from LDCF/SCCF
portfolio **to strengthen
implementation**

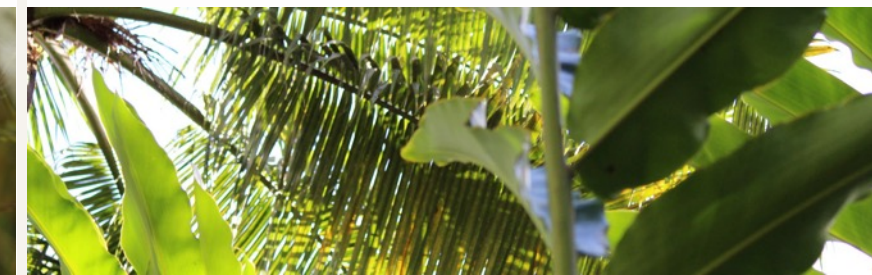
Share experiences with AF, CIFs,
and others

**Communication
and outreach**



Communicate about **LTV** in
programming

**Enhance outreach and
communications** with
donors, at COPs





GEF as a Leader to Global Goals

A central player in the Healthy Planet, Healthy People approach towards a green, blue, and resilient recovery

Uniquely placed to narrow the adaptation and finance gaps

Committed to contribute to Paris Agreement and other international goals