



The Critical Ecosystem Partnership Fund

A Global Partnership empowering CSOs in high biodiversity areas

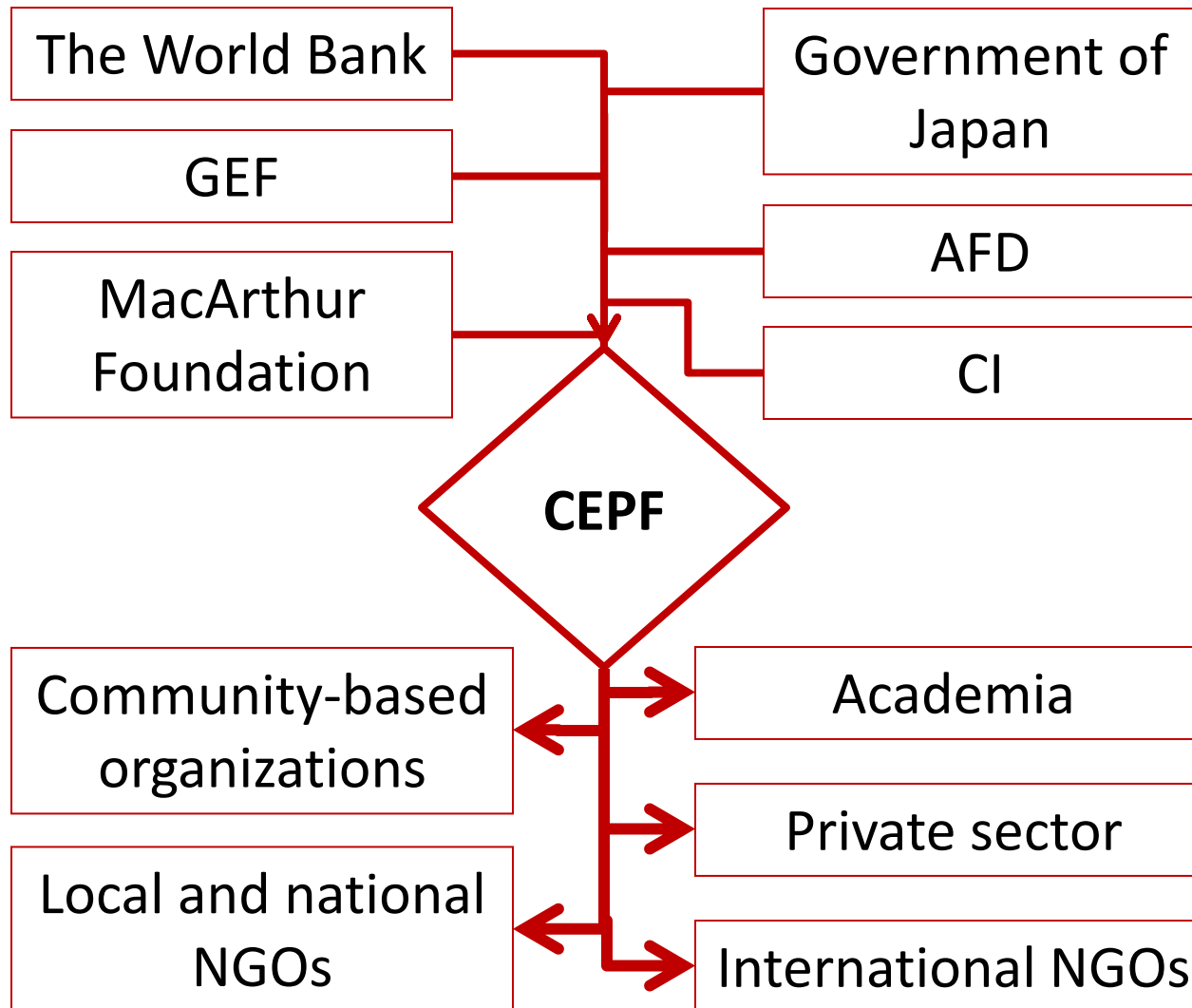
Patricia Zurita
Executive Director
January 18, 2012

CRITICAL | **ECOSYSTEM**
PARTNERSHIP FUND

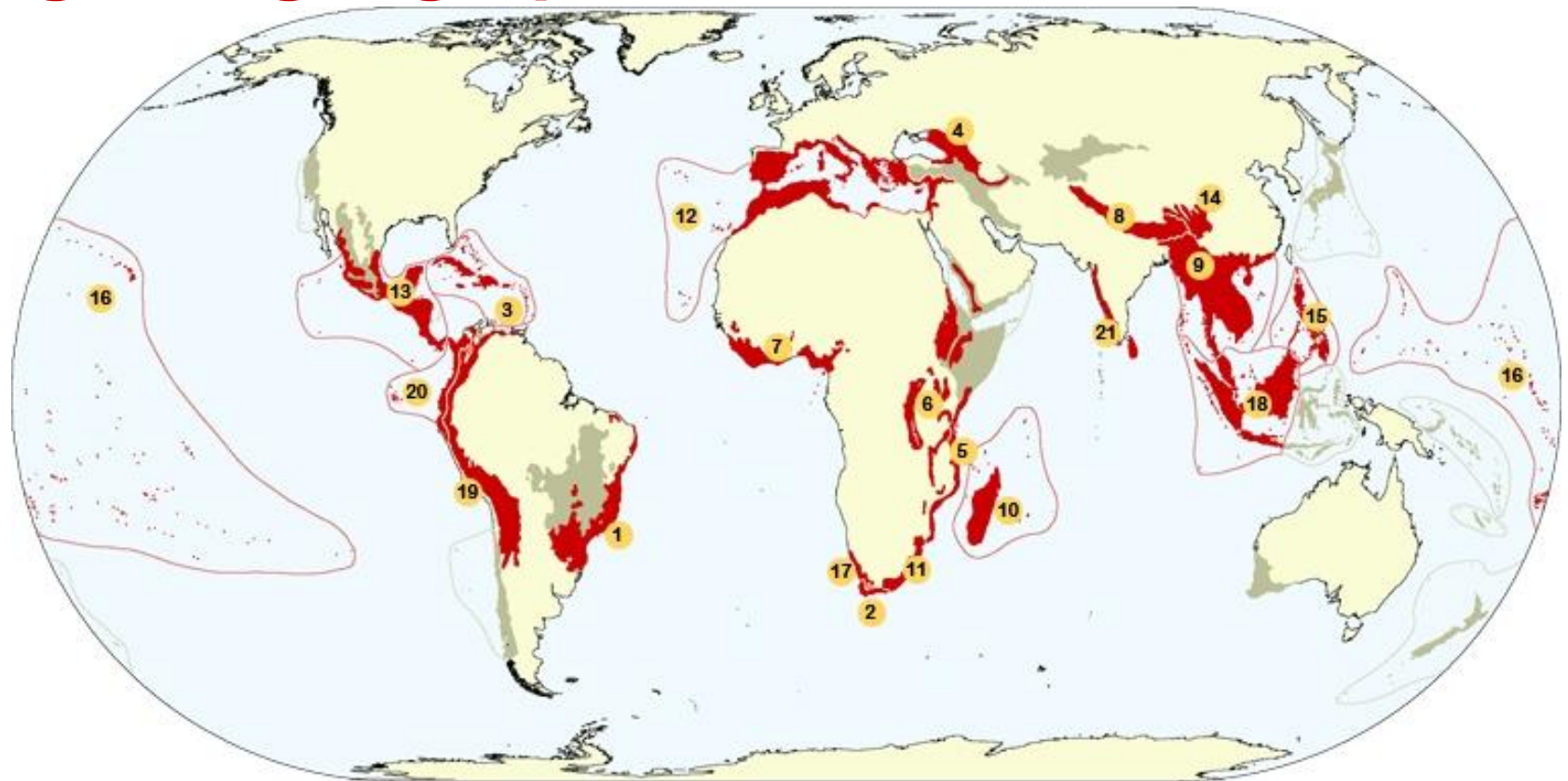



Empowering civil society to protect the most critical ecosystems

A unique partnership filling a unique niche



Targeted geographies



 Biodiversity hotspots where CEPF invests

 Other hotspots

- | | |
|---------------------------------------|----------------------------------|
| 1. Atlantic Forest | 12. Mediterranean Basin |
| 2. Cape Floristic Region | 13. Mesoamerica |
| 3. Caribbean Islands | 14. Mountains of Southwest China |
| 4. Caucasus | 15. Philippines |
| 5. Coastal Forests of Eastern Africa | 16. Polynesia-Micronesia |
| 6. Eastern Afromontane | 17. Succulent Karoo |
| 7. Guinean Forests of West Africa | 18. Sundaland |
| 8. Himalaya | 19. Tropical Andes |
| 9. Indo-Burma | 20. Tumbes-Chocó-Magdalena |
| 10. Madagascar & Indian Ocean Islands | 21. Western Ghats & Sri Lanka |
| 11. Maputaland-Pondoland-Albany | |



Since 2001

- **21** investment strategies implemented
- **53** countries
- **\$132** million in grants awarded
- **\$321** million leveraged by civil society groups receiving those grants
- **1,627** civil society groups supported
- 11,000 families and over 18,000 benefited

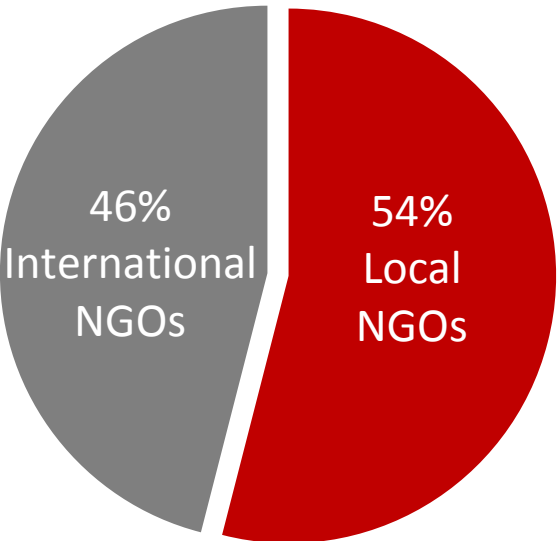


10 years of results

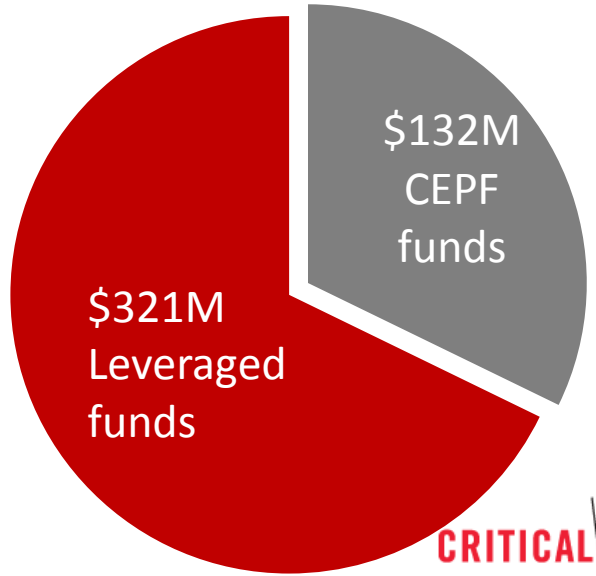
- **Over 12 million** hectares of new protected areas in 22 countries
- **21 million+** hectares of key biodiversity areas with improved management, including agreements with communities and the private sector to ensure sustainability
- At least **25 sectoral policies**, supporting biodiversity conservation and mainstreaming conservation into development policy
- More than **80 networks** of civil society groups created

Effective financial mechanism that reaches local organizations and leverages funding

Building local capacity*

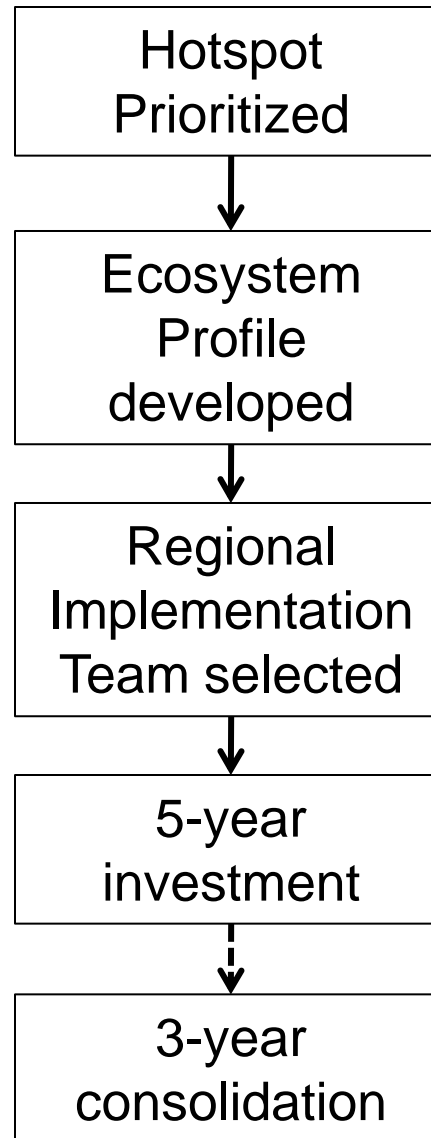


Leveraging financial support**



* Phase II
** Since inception

Our process





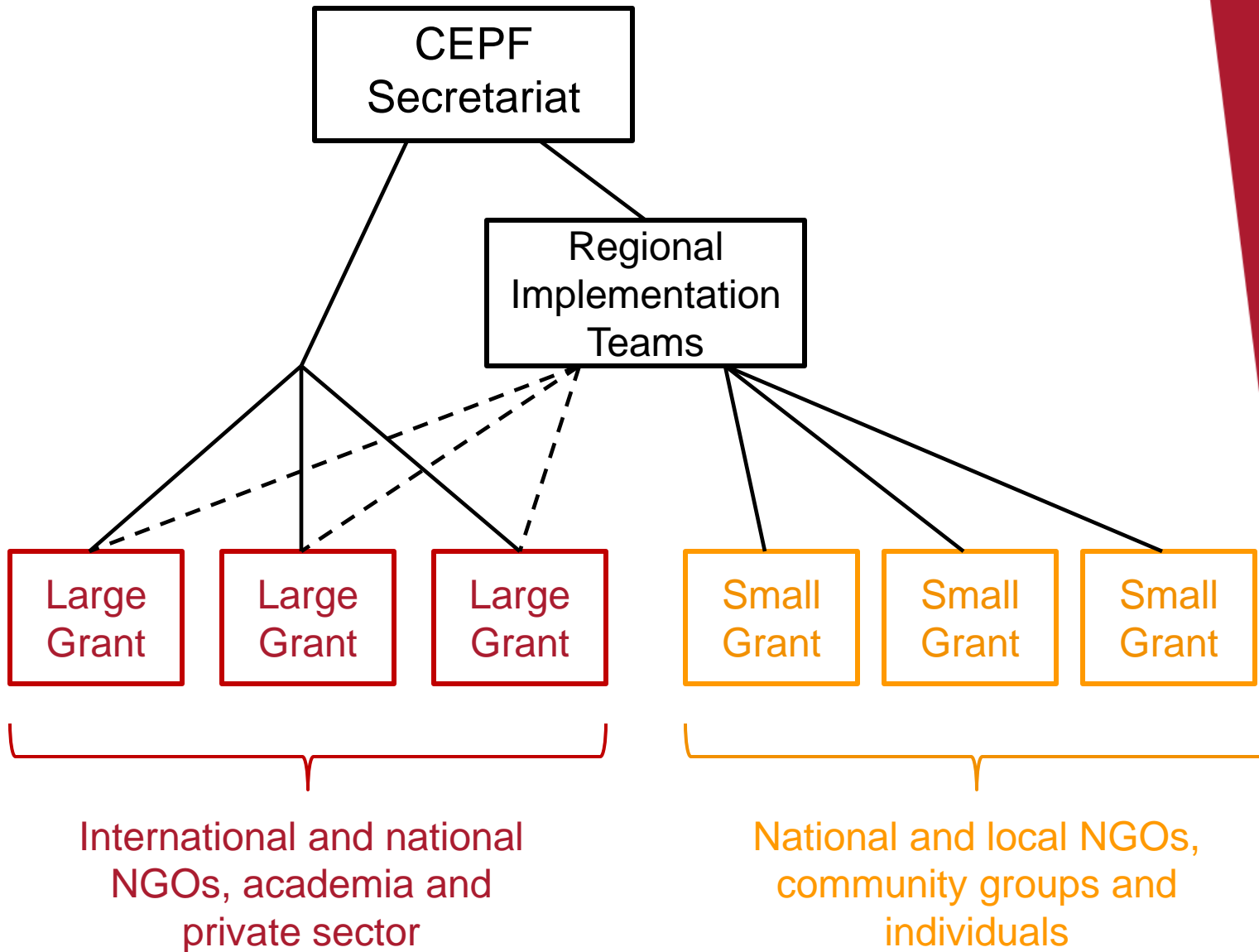
Ecosystem Profiles build vision from the bottom up

- Developed before CEPF invests in a region
- Extensive multi-stakeholder consultation, including government officials and focal points, coupled with desk research
- Establish a common vision for collaborative action built on solid scientific foundations
- Create buy-in for CEPF investment identifying funding gaps for conservation and the right niche for CEPF investments
- Generates momentum mobilizing local, regional and global actors to create and achieve a common conservation vision for each biodiversity hotspot



Regional Implementation Teams

- Act as an extension service to assist civil society groups to designing and implement successful projects
- Review grant applications and manage external reviews with technical experts
- Award and manage small grants
- Widely communicate CEPF objectives, lessons learned and results
- Engage the existing regional programs of CEPF donors, government, and other sectors in implementation





Securing Focal Point Endorsement



GEF Focal Point Endorsement

- Typically is sought after the Ecosystem Profile has been approved by CEPF's Donor Council
- CEPF cannot invest in a country until endorsement has been secured
- GEF's contribution to the CEPF does not jeopardize or reduce any countries STAR allocations as funding for CEPF was approved under GEF3
- In average it has taken CEPF 19 months to secure investment in 47 countries during Phase II
- Very much looking forward to speeding up the process so funding can be disbursed and results can be achieved



**We are looking forward to working more
closely together with you**

CRITICAL | **ECOSYSTEM**
PARTNERSHIP FUND



Thank you!

CRITICAL | ECOSYSTEM
PARTNERSHIP FUND