



GEF Expanded Constituency Workshop Skopje, North Macedonia



October 2-5, 2023

Full-Sized Project (FSP): over US\$2M

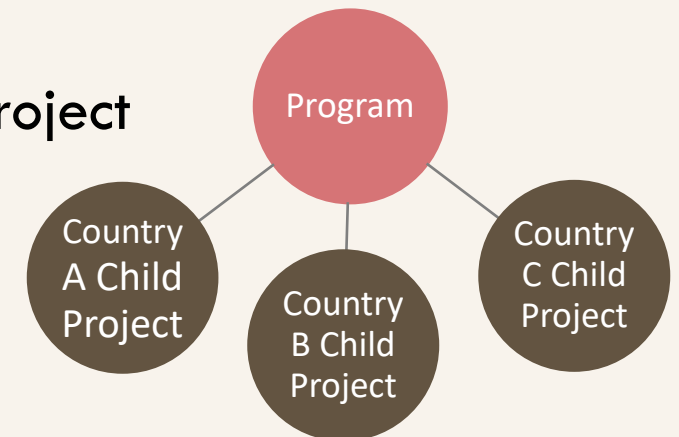
Approval by **Council** (twice a year & intersessional by mail)

Medium-Sized Project (MSP): US\$2M or less

Approval by **GEF CEO** (on a rolling basis)

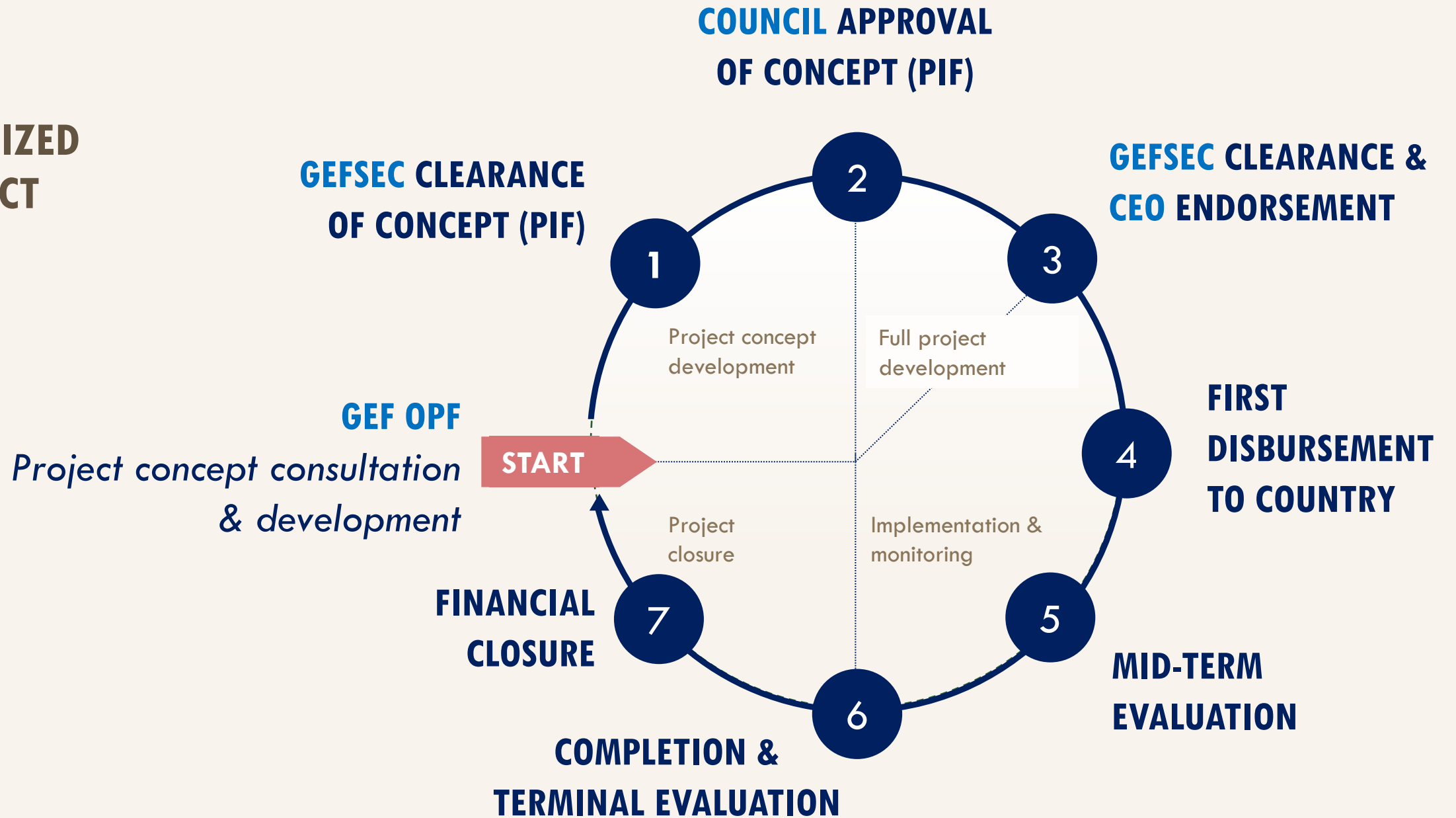
Program: longer term and strategic arrangement of individual interlinked projects that aim at achieving large-scale impact

Child Project: an individual project under Program



**PROJECT
MODALITY**

FULL-SIZED PROJECT CYCLE



PROJECT CANCELLATION

FULL-SIZED
PROJECT

COUNCIL APPROVAL
OF PROJECT CONCEPT
(PIF)

*Project cancellation if CEO Endorsement Request (full project) not **submitted** in **12 months***

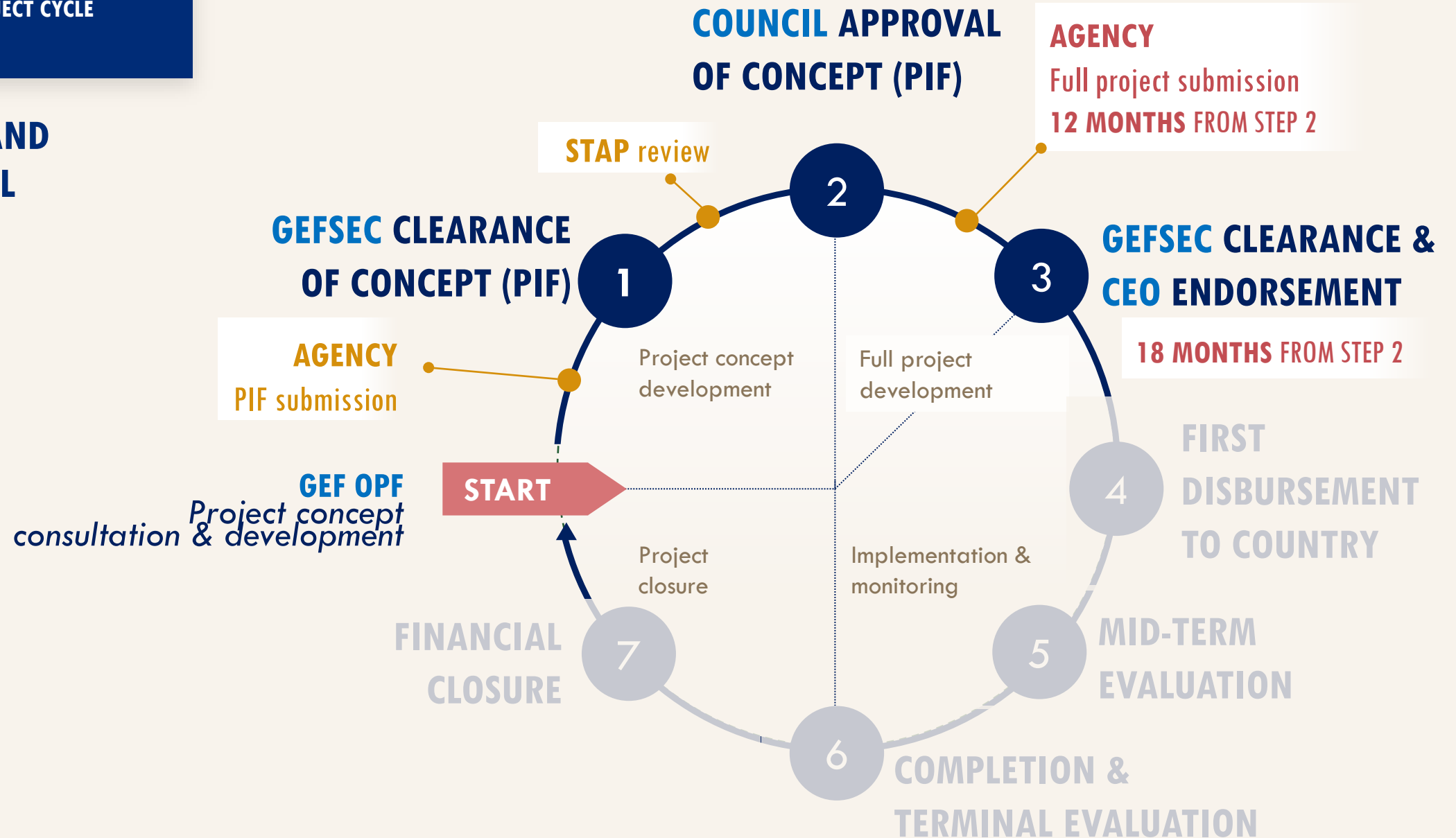
*Project cancellation if CEO Endorsement (final approval step) not **obtained** in **18 months***

SOFT DEADLINE

HARD DEADLINE

REVIEW AND APPROVAL PROCESS

FULL-SIZED PROJECT CYCLE



PROJECT CANCELLATION POLICY

- *FULL-SIZED PROJECT*

**COUNCIL APPROVAL
OF CONCEPT (PIF)**

12 months

**CEO Endorsement
Request Submission**

18 months

CEO Endorsement

Unable to **SUBMIT CEO
Endorsement Request** in time?

OFP or **Agency** (for Global/Regional projects) notifies the GEF CEO *prior to* the submission deadline.

Unable to **OBTAIN
CEO Endorsement** in time?

OFP or **Agency** (for Global/Regional projects) submits Extension Request to the GEF CEO *prior to* the deadline.
GEF CEO approves **only in an extraordinary event**, (e.g., war, pandemic) one-time extension up to 12 months.

AGENCY FEE POLICY

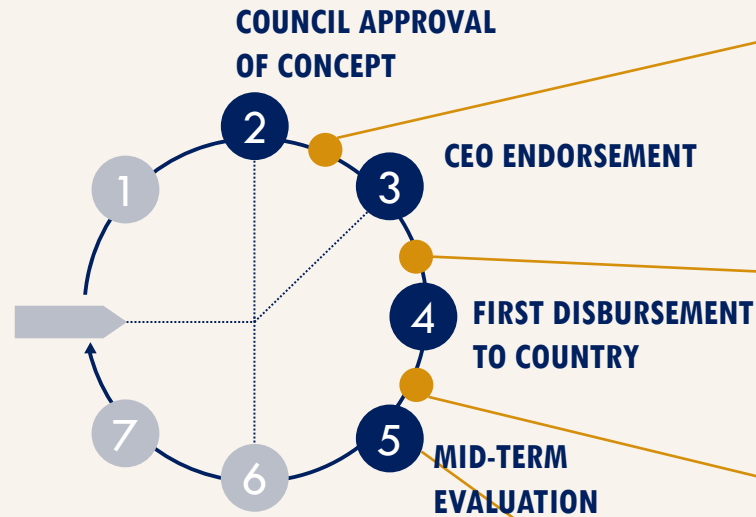
OBJECTIVE: To define the fee structure that will be used to pay for the services provided by GEF Agencies that implement GEF projects

Child project under a Program: Fee is based on the Program Financing amount irrespective of Child project financing amount

	Fee Structure for projects	
	\$10M or less	Over \$10M
10 Agencies ADB, AFDB, EBRD, FAO, IDB, IFAD, UNDP, UNEP, UNIDO, WB	9.5%	9.0%
8 Accredited Agencies BOAD, CAF, CI, DBSA, FECO, FUNBIO, IUCN, WWF-US	9.0%	
Small Grants Program (SGP)	9.0%	
Project Preparation Grant (PPG)	Same rate as the baseline project	

PROJECT FUNDING & AGENCY FEE DISBURSEMENT

FULL-SIZED PROJECT CYCLE



TRUSTEE

sets aside *GEF project funding* & disburses *20% of the Agency fee*

TRUSTEE

disburses *GEF project funding*

TRUSTEE

disburses *50% of the Agency fee*

TRUSTEE

disburses *the last 30% of the Agency fee*

Separation of Project Implementation & Execution

Implementation entails the **oversight** of project execution to ensure that the project is being carried out in accordance with agreed standards & requirements.



Execution refers to the **management & administration** of the day-to-day activities of projects in accordance with specific project requirements in an agreement with the GEF Agency.



Fiduciary Standards & Agency Fee Policy mandate **separation** of implementation & execution functions to:

- avoid conflict of interest
- promote country ownership
- build capacity of national executing entities



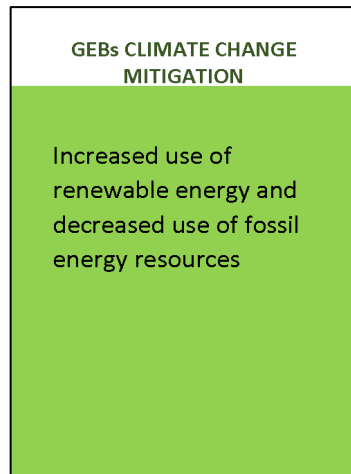
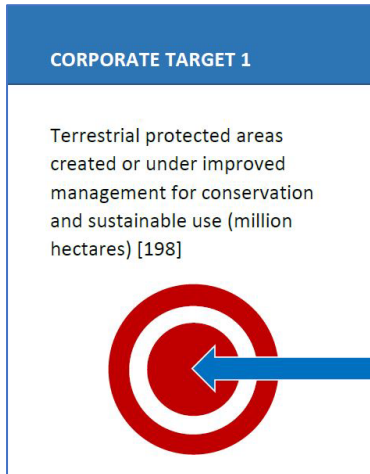
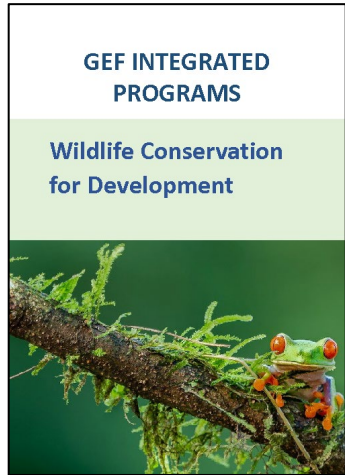
Project Life-Cycle Exercise

This activity is designed to visually create a GEF project and its life-cycle based on IPs, focal area objectives, deliverables and results.





Project Life-Cycle Cards



There are 6 types of cards

1. IP cards
2. Focal Area Objective cards
3. Agency cards
4. Target cards
5. GEB cards
6. Timeline and Deliverable cards



Project Life-Cycle Exercise

- **Begin by deciding on a project** – it can be existing, or one created on the spot.
- Choose the **focal areas and objectives and IP** (if applicable) by laying out the cards on the table to create a visual representation of the project life-cycle.
- Select which **Agency(s)** to use
- Select which **Targets and GEB** that are being addressed
- Use the **timeline and deliverables cards** to layout the order that actions need to take place. – *Such as PIF creation, CEO Endorsement, Stakeholder Consultations, MTR, TE, etc.*



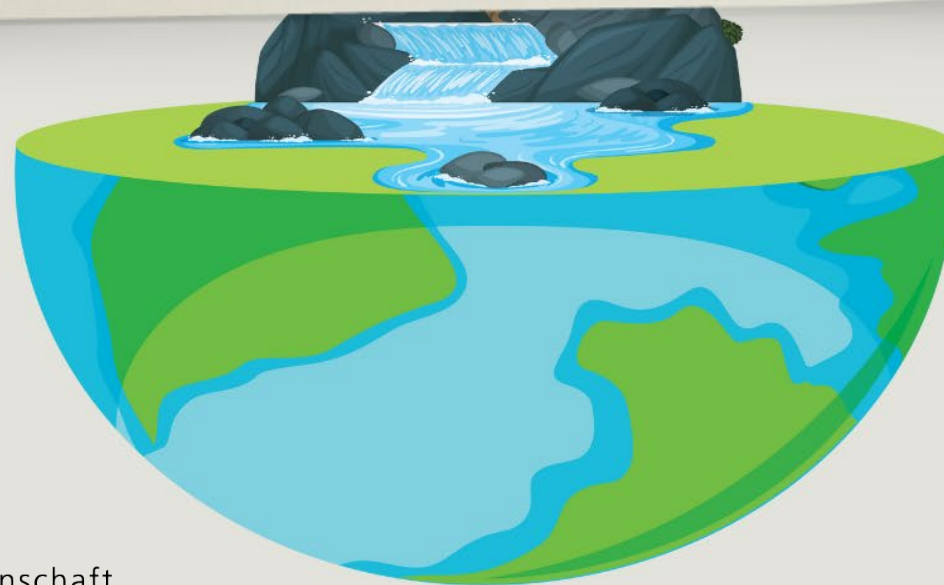
Questions?



global
environment
facility
INVESTING IN OUR PLANET



**SWISS ENGAGEMENT IN WATER AND ENVIRONMENT
NORTH MACEDONIA**



Schweizerische Eidgenossenschaft
Confédération suisse
Confederazione Svizzera
Confederaziun svizra

**MS CARMEN THÖNNISSEN,
REGIONAL ADVISOR OF WATER AND ENVIRONMENT**

SWISS COOPERATION PROGRAMME 2021-2024

Overall budget for 4 years: **CHF 64 mio**

Fields of intervention

OVERALL GOAL
Support North Macedonia to build a socially inclusive democracy and market economy, while ensuring sound natural resources governance and resilience to climate change



DEMOCRATIC GOVERNANCE

- Strong civil society
- Transparent, effective and inclusive governance
- Free and fair democratic elections



SUSTAINABLE ECONOMIC DEVELOPMENT

- Business ecosystem development
- Skills development and decent employment
- Stable macroeconomic conditions



ENVIRONMENT AND SUSTAINABLE PUBLIC UTILITY SERVICES

- Sustainable use and protection of natural resources
- Reliable public utility services
- Communities resilient to floods

Swiss Engagement in Water and Environment

- LONG-LASTING COOPERATION <20 YEARS

- TOTAL SUPPORT: 130 MIO.

- *Fields of Interventions:*

IWRM

Improvement of
public services
for water,
sanitation, and
waste
management

Flood risk
management

Nature
Conservation

Main Features of the Swiss Support:

- ❑ Assisting the country in the **EU accession and negotiation** process;
- ❑ Support is **in line with national strategic goals** and needs;
- ❑ **Long-term interventions** to ensure systemic changes;
- ❑ **Sustainability** of the achieved results and processes is crucial;
- ❑ **Territorial focus on river basins** and implementation of projects with complementary goals;
- ❑ **Infrastructure** projects are accompanied with **corporate development measures** for operators and authorities;
- ❑ Using **Swiss knowhow and expertise** in the fields of intervention;
- ❑ Using **Communication for Development** to ensure ownership and actions;



Smart Packaging Waste Management



- National Groundwater Data Management System
- Groundwater Management, Use and Protection Programme



Improving Resilience Against Floods



Polog Solid Waste Management



Gostivar Water Supply



Kocani Wastewater Treatment Plant



Delcevo Water Supply



Nature Conservation Program (NCP)

Main Results of the Swiss Support

❑ Integrated Water Resource Management

River Basin Management Plan of Bregalnica, Strumica, and Prespa Lake

❑ Water Supply

120'000 citizens were provided with improved drinking water supply services



Gostivar Water Supply – Reservoir



Delchevo – Water Treatment Plant

Main Results of the Swiss Support

❑ Wastewater and Sanitation

233'000 citizens were provided with wastewater treatment services



WWTP Kumanovo – Capacity 90'000 citizens



WWTP Berovo – Capacity 14'000 citizens



WWTP Gevgelija – Capacity 16'000 citizens



WWTP Kochani – Capacity 60'000 citizens (Kochani and Vinica)

Main Results of the Swiss Support

❑ Solid Waste Management

300'000 citizens from Polog Region were provided with better waste management services.

Further improvements are on-going with co-financing with EBRD



Rusino landfill: before and after

Main Results of the Swiss Support:

❑ Solid Waste Management:

Smart Waste Packaging Management - Reverse Vending Machines and Igloos



Main Results of the Swiss Support:

□ Increasing Resilience to Floods in the Polog Region



Infrastructure works in Polog region





PH1

JUDOVI LIVADI
1km

Schweizerische Eidgenossenschaft
Confédération suisse
Confederazione Svizzera
Confederaziun svizra

Swiss Agency for Development and Cooperation SDC



PEHCHEVO - 2.9 km



PH1

Schweizerische Eidgenossenschaft
Confédération suisse
Confederazione Svizzera
Confederaziun svizra

Swiss Agency for Development and Cooperation SDC



Main Results of the Swiss Support

☐ Nature Conservation Programme

- **National Strategy for Nature Protection** with Action Plan (2017-2027) elaborated
- With the **newly protected areas, Osogovo Mountains** and **Maleshevo** as protected landscape, the country territory under protection has been increased from 8,9 to 11,2%;
- **Educational Centre** for nature conservation was established;
- The **awareness of the population** of the Bregalnica region on the value of nature and its sustainable use has been increased from 30% in 2016 to 70% by the end of 2022;
- An integrated tourism offer was developed
(Eco-ethno park Cesinovo – Oblesevo and Touristic info centre “Ponikva”)
- **Payment for Ecosystem Services** was developed and tested in **Vevchani Springs** protected area
- The **Oscar-nominated film Honeyland** was shot– an incredible story promoting sustainable bee keeping and honey production.





THANK YOU!

GEF Focal Point role in the GEF Partnership

Project/Idea identification and Selection

- How do you identify and prioritize GEF financed Projects that align with your national goals and obligations under the GEF supported conventions
- What criteria do you use to determine which projects are suitable to go with one or another Implementing Agencies

Stakeholder Engagement: how do you engage with

- civil society, conventions focal points, governmental institutions and private sector.

What system do you have in place to monitor the progress: impact and GEBs generated by the GEF financed projects? How do you involve civil society in monitoring and evaluation process.