

# **Regional Adaptation Programming and Strategy Workshop for Caribbean Small Island Developing States (SIDS)**

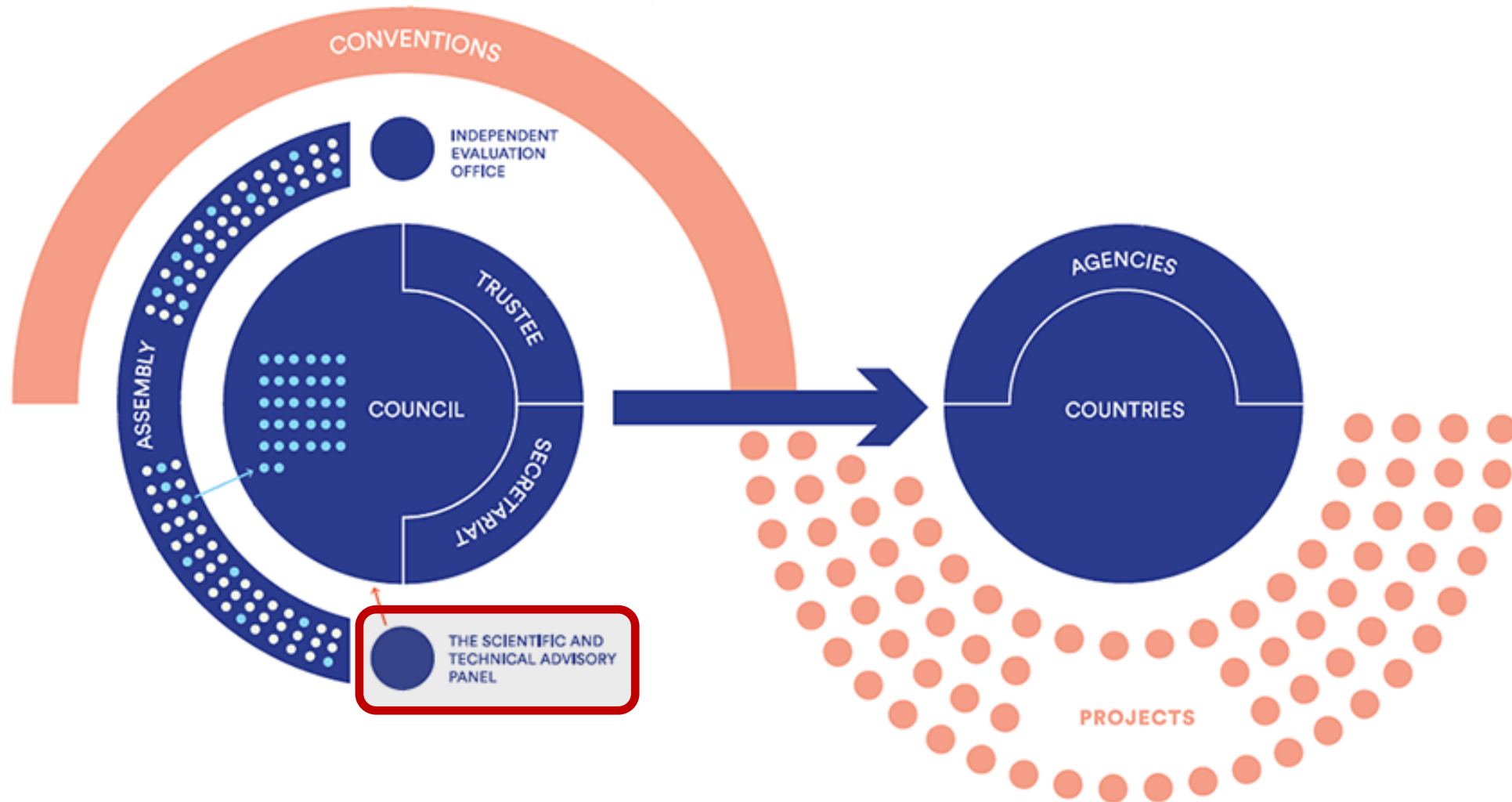


**Rosina Bierbaum**

**Chair, Scientific and Technical Advisory Panel  
to the Global Environment Facility**

**March 15, 2024**

# STAP in the GEF Partnership



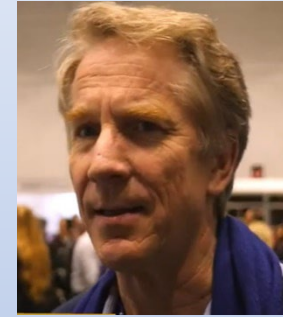
# Scientific and Technical Advisory Panel



**Rosina Bierbaum**  
Chair



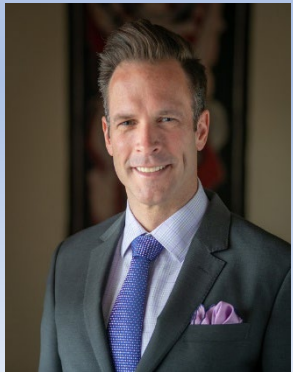
**Christopher Whaley**  
Advisor



**Mark Stafford Smith**  
Advisor



**Blake Ratner**  
Risk Appetite



**Edward Carr**  
Climate Adaptation



**Miriam Diamond**  
Chemicals and Waste



**John Donaldson**  
Biodiversity



**Susanne Schmeier**  
International Waters



**Ngonidzashe Chirinda**  
Climate Mitigation



**Graciela Metternicht**  
Land Degradation



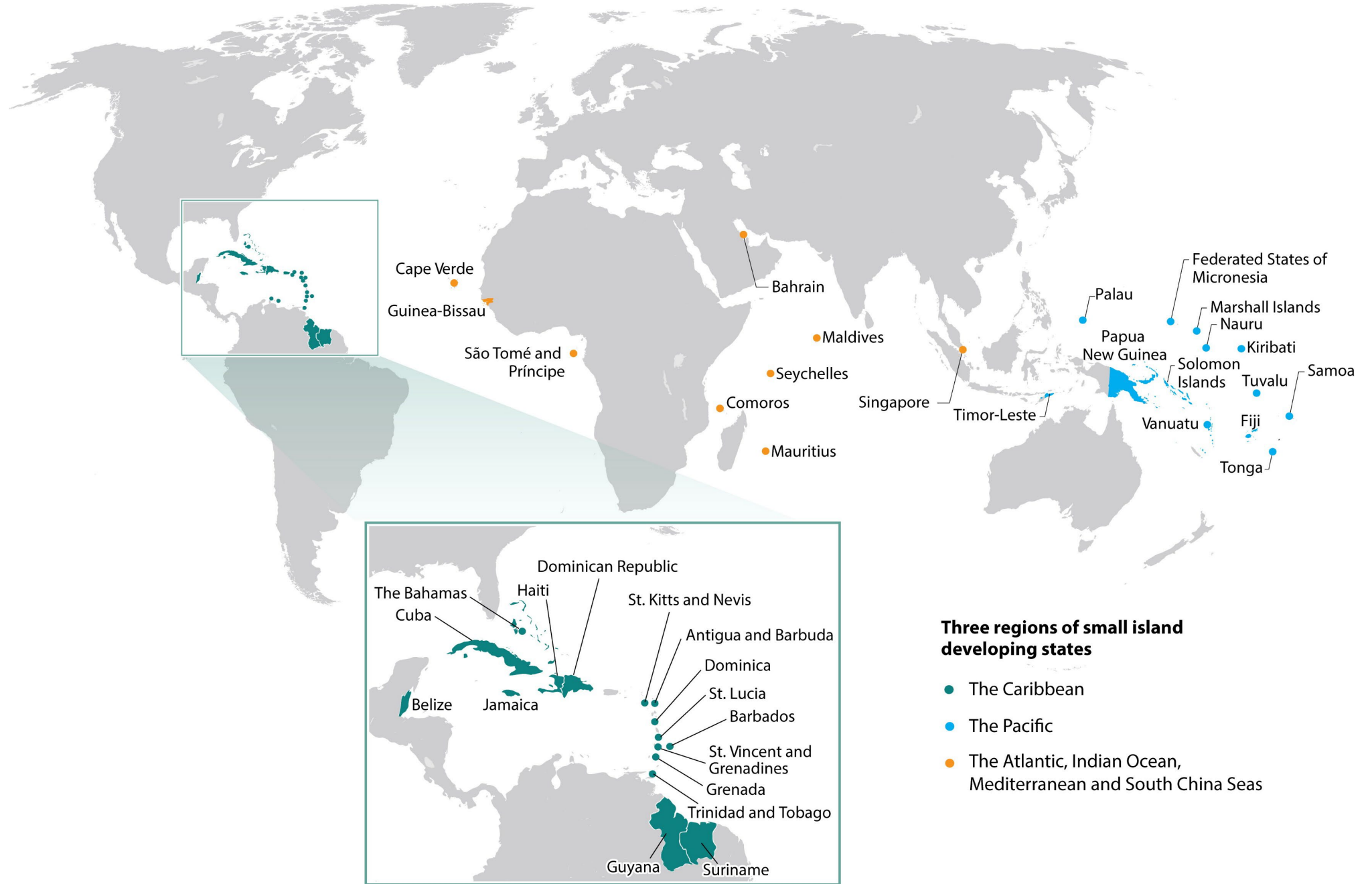
Source: <https://www.friendsofnasa.org/2024/02/haiti-dominican-republic-international.html>



Source: <https://www.friendsofnasa.org/2024/02/sunlight-reflecting-on-caribbean-sea.html>

# The Caribbean

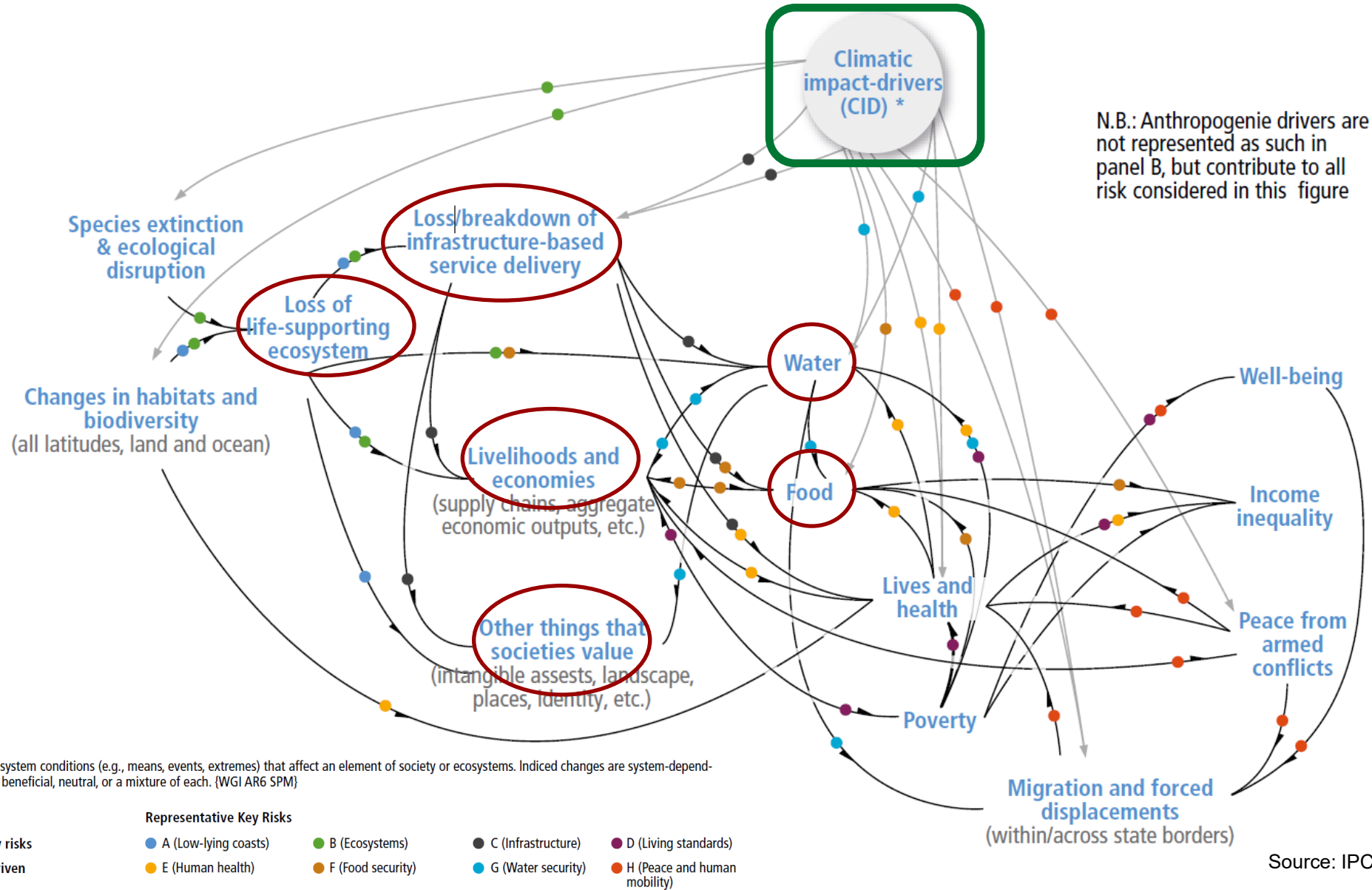
---



**Three regions of small island developing states**

- The Caribbean
- The Pacific
- The Atlantic, Indian Ocean, Mediterranean and South China Seas

# IPCC's 6<sup>th</sup> Assessment: Impacts, adaptation, and vulnerability, connections across key risks



Source: IPCC, AR6 WGII, 2022

# IPCC: key risks in SIDS

---



## Risks are interconnected!

- Direct effects - increased temperatures, changes in rainfall
- Indirect effects - loss of biodiversity and ecosystem services
- Affect people and well-being

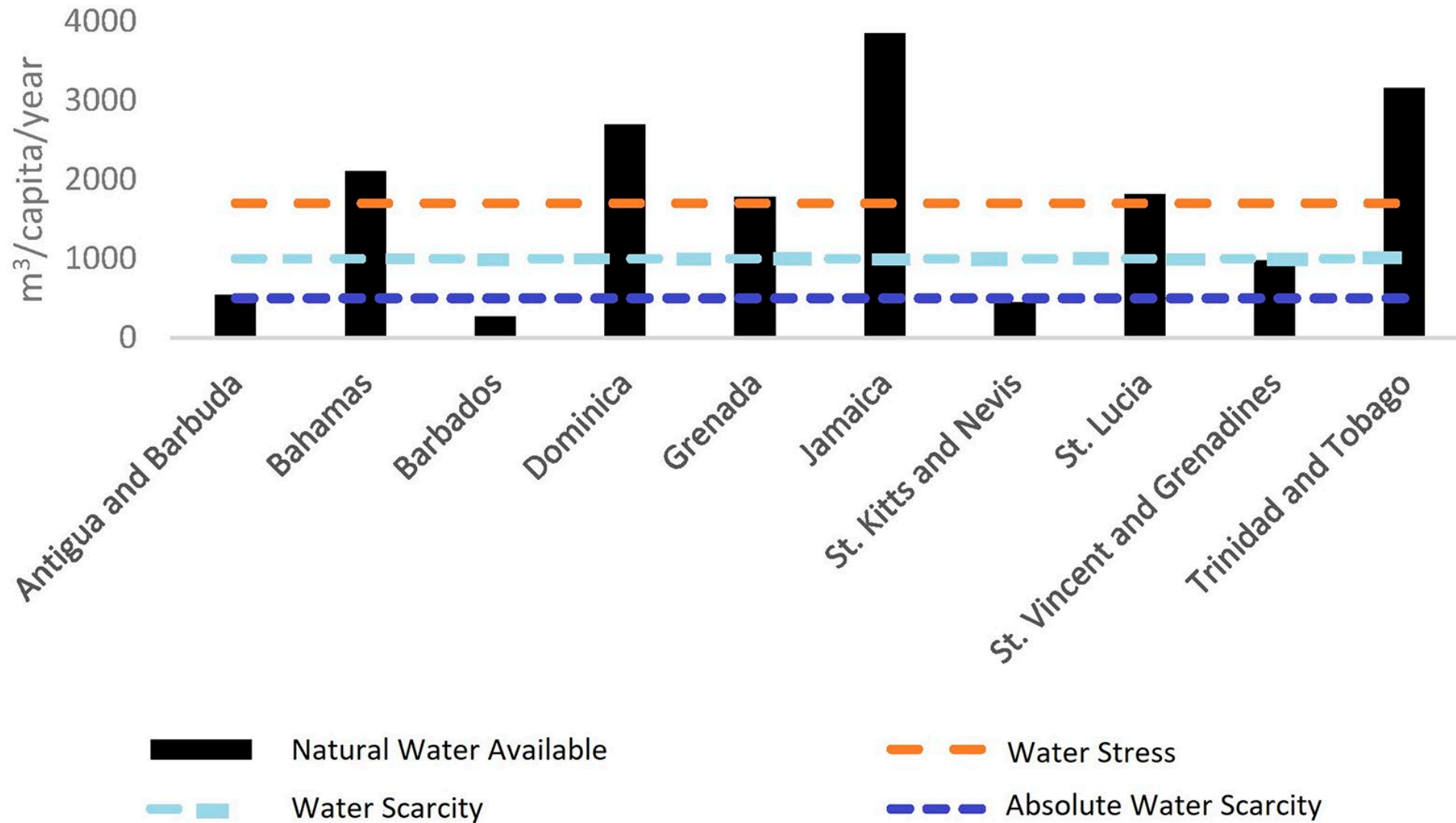
# IPCC: Climate change impacts and risks in SIDS

---

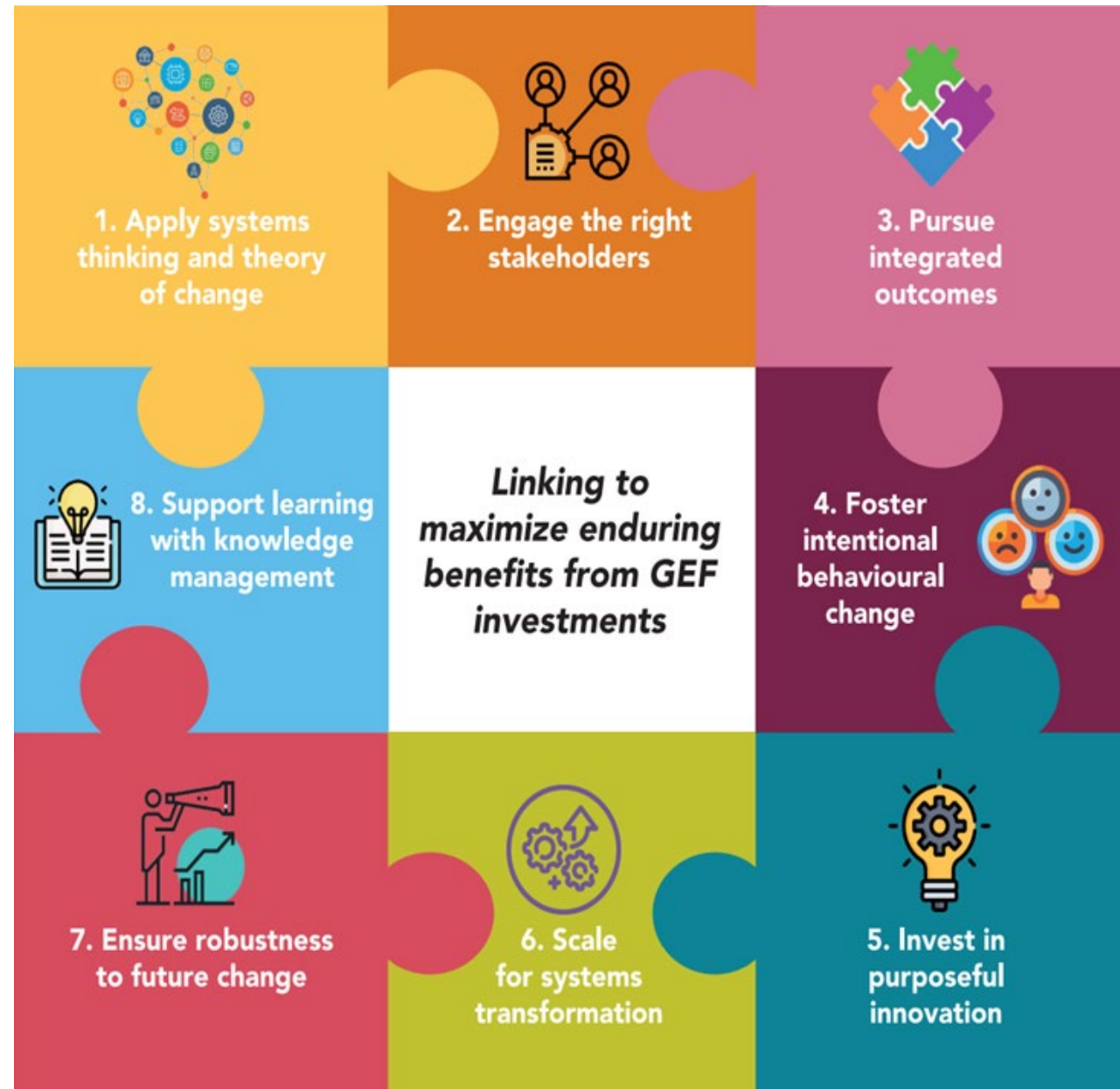
- **Ecosystems:** degradation of ecosystems affects vulnerability
- **Food:** extreme precipitation, increased aridity, contributes to food insecurity
- **Cities and settlements:** sea level rise affects infrastructure and economies
- **Migration:** climate change impacts may lead to increased migration
- **Coral reefs:** increased temperatures result in coral bleaching and decline
- **Water:** increased aridity affects water resources



# Available Water



# STAP's 8 enabling elements



STAP'S [Enabling elements](#), 2022.

# Evaluating adaptation benefits

- IPCC noted that adaptation projects were often **fragmented**
- Adaptation projects need a clear rationale:

↓ **reduce exposure**

↓ **reduce sensitivity**

↑ **adaptive capacity**



Jamaican farmer watering lettuce in Sr. Elizabeth

# Adaptation Projects need a clear rationale

STAP developed a 'decision tree' to aid projects with four main elements:

Decide whether adaptation is required

Identify projects to meet a recognized need

Ensure projects complement current efforts

Maximize synergies/ minimize trade-offs



Local woman fetching water from a barrel on a Cuban farm.

[A decision tree for adaptation rationale](#)



Source: iisd.org

- **Caribbean SIDS (11412):** Climate Change Resilience in Caribbean Fisheries

## **STAP advice: SIDS projects**

- **Dominican Republic (11402):** Enhance climate resilience, reduce vulnerability to climate change, and achieve land degradation neutrality
- **Caribbean SIDS (10895):** Multi-country soil management initiative for Integrated Landscape Restoration and climate-resilient food systems



Source: <https://www.caribbeannationalweekly.com/> (Jamaica)

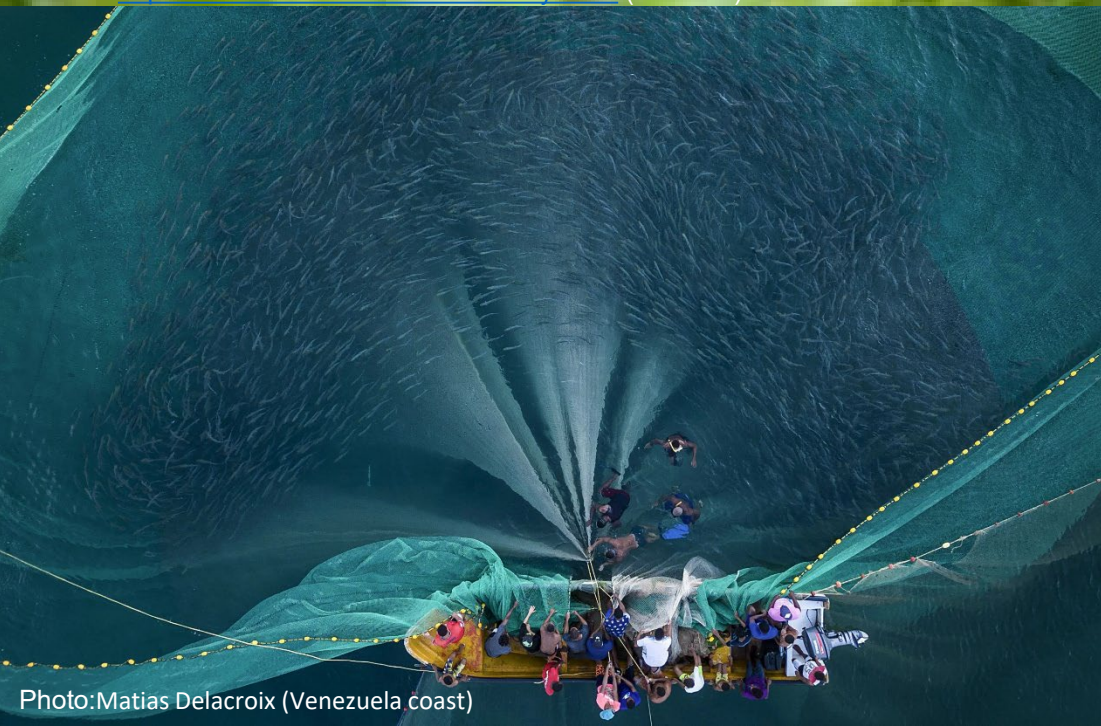


Photo: Matias Delacroix (Venezuela coast)

## Take away messages from SIDS projects

- Adaptation requires attention to **behavioral change** - cultural values, norms, other social issues
- Every GEF project must think about adaptation consequences – key for **enduring** environmental and social benefits
- **Simple future narratives** of how key drivers (e.g. climate, population, demand) may play out help develop **robust** projects!
- Managing **knowledge and learning** is important for scaling best practices and influencing new policies, at every level.

*Simple Future Narratives Brief and Primer*

*Why behavioral change matters to the GEF and what to do about it*

# Thank you!

