



# GEF Introduction Seminar 2024



SEPTEMBER 9-10, 2024

---

[Thegef.org](https://Thegef.org) | [Facebook](#) | [Twitter](#) | [YouTube](#)



September 9

- Governance
- Partnership
- Communication

September 10

- Programming Strategy
- Global Biodiversity Framework Fund (GBFF)
- Climate Change Adaptation
- Operations
- Policy Framework
- Grievance Mechanism
- Monitoring & Results
- Knowledge Management
- Survey



*Agenda, presentation & reference materials, recording:*

*<https://www.thegef.org/events/gef-introduction-seminar-september-2024>*

# THE JOURNEY OF THE GEF FAMILY OF FUNDS



**1987**  
**ENDANGERED SPECIES**  
 GEF PILOT WORLD BANK, UNEP & UNDP

**1991**  
**THE MONTREAL PROTOCOL**  
 Addressing the Ozone Layer. An Amazing Success. Here we go.

**1987**  
**OUR COMMON FUTURE**  
 Connecting Poverty, Development, Environment  
 Brundtland Report

**1992**  
**THE RIO EARTH SUMMIT & THE RIO CONVENTIONS - UNFCCC, CBD, UNCCD**  
 An Ambitious Idea  
 The Big Dream with Common but Differentiated Responsibilities

**FOREVER CHEMICALS**

**1994**  
**THE GEF INSTRUMENT A CONSTITUTION TO SAVE THE PLANET**  
 The Making of the Partnership

**GEF SMALL GRANTS PROGRAMME**  
 Supporting Communities

**The first CEO Mohammed el Ashrey 1994-2003**

**1996**  
**POLICY ON PUBLIC PARTICIPATION**  
 Values of the Partnership

**LOSS OF POLLINATORS**

**2000**  
**THE STOCKHOLM CONVENTION (POPs)**  
 Addressing Forever Chemicals

**First Partnership Expansion: 1999-2006**

**CEO Leonard Good 2003-2006**

**UNFCCC COP 7**

**LDCF, SCCF - Family of Funds**

**2001**

**2006**

**2010**  
 Green Climate Fund (GCF)  
 Nagoya Protocol Implementation Fund (NPIF)

**Second Partnership Expansion: 2013-2016**

**CEO Monique Barbut 2006-2012**

**2013**

**Indigenous Peoples Advisory Group (IPAG)**

**RESILIENCE**

**CHEMICALS & WASTE**

**MINAMATA CONVENTION ON MERCURY**

**2015**

**CEO Naoko Ishii 2012-2020**

**PARIS AGREEMENT**

**Capacity-building Initiative for Transparency (CBIT)**

**LIVELIHOODS**

**RESTORATION & PROTECTION**

**2022**

**GEF-8 RECORD REPLENISHMENT**

**Major updates**

**Safeguards, Fiduciary Standards, Conflict Resolution**

**Integration, Inclusion, Impact**

**STRENGTHENING POLICIES**

**2024**

**How are we doing on this Journey? Building up momentum towards GEF-9**

**CBD COP 15**

**New Global Biodiversity Framework Fund (GBFF)**

**LAND DEGRADATION & DROUGHTS**

**The CEO today Carlos Manuel Rodriguez 2020-Present**

**2020**

**Gender Equality, Inclusive Conservation**

**HEALTH**

**GEF-6 & GEF-7, NEW IDEAS AND INITIATIVES BEGINNING OF INTEGRATED PROGRAMMING**

**FLOODS**



**WHAT IS THE GEF?**  
**MANDATE**  
**GOVERNANCE**  
**PARTNERSHIP**

# A GLOBAL PARTNERSHIP

Largest environmental multi-donor trust fund

Financial mechanism of international environmental conventions



## 18 AGENCIES



# GOVERNANCE

## GUIDANCE

### CONVENTIONS

CBD  
UNFCCC  
UNCCD  
Stockholm (POPs)  
Minamata  
BBNJ

### COUNCIL

32 Constituencies

## OPERATIONS

### SECRETARIAT

INDEPENDENT  
EVALUATION OFFICE

STAP

TRUSTEE

## ACTION

186 member governments

### COUNTRIES

Operational & Political Focal Points  
Convention Focal Points  
Civil Society Organizations  
Indigenous Peoples, Women, Youth  
Private Sector

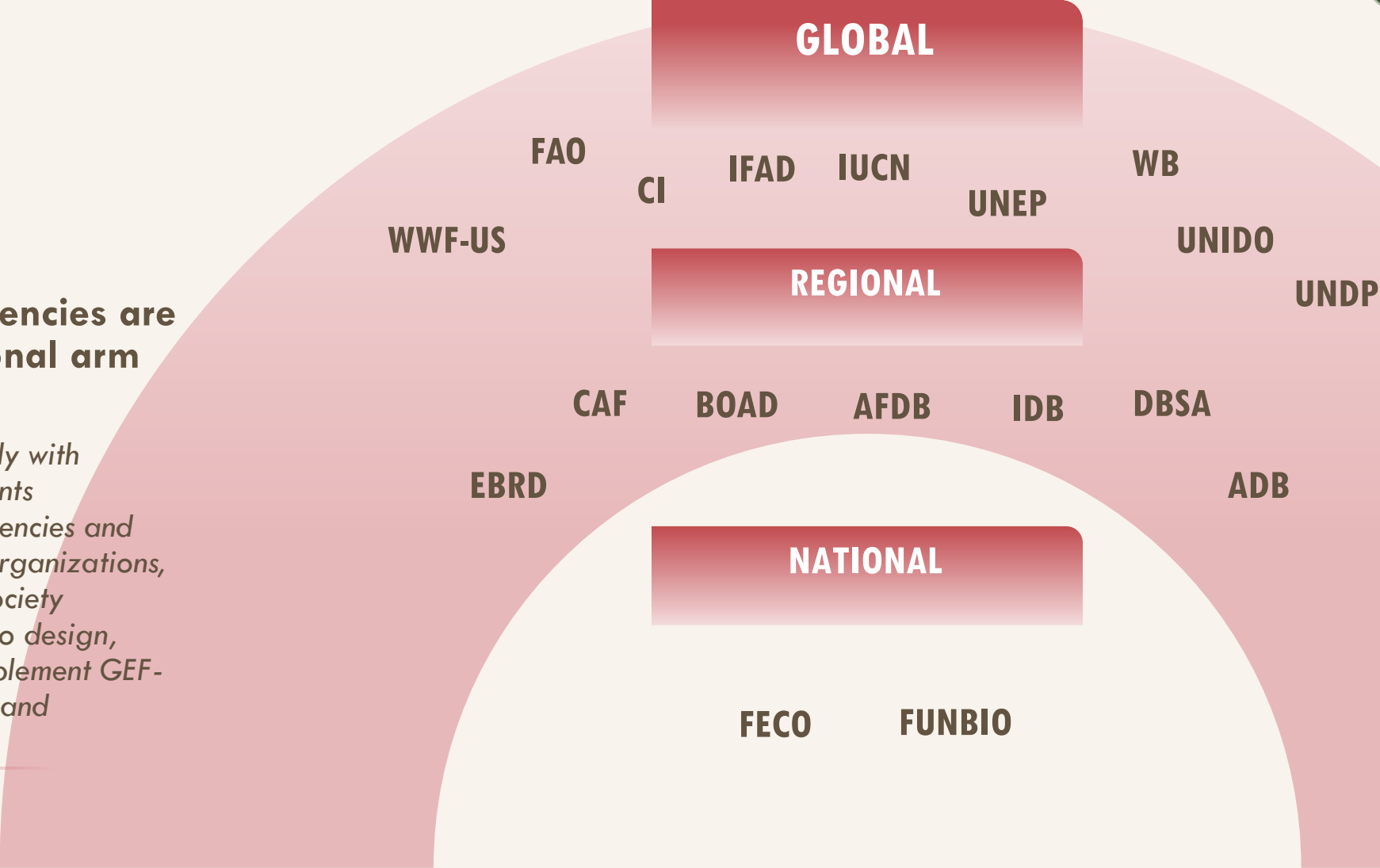
18 AGENCIES

EXECUTING ENTITIES

# 18 GEF AGENCIES

**The GEF Agencies are the operational arm of the GEF.**

*They work closely with project proponents (government agencies and other national organizations, including civil society organizations) to design, develop and implement GEF-funded projects and programs.*



# FAMILY OF TRUST FUNDS

## GEF TRUST FUND



serves CBD, UNFCCC, UNCCD, Minamata Convention, Stockholm Convention

## LDCF-SCCF TRUST FUNDS



serves UNFCCC

## GBF, NAGOYA TRUST FUNDS



serves CBD



# GEF-8 Resources

## GEF Trust Fund

Started in 1991 with Pilot Phase and was Restructured in 1995

**4-year**

replenishment cycle from July 1, 2022 to June 30, 2026

**\$5.33 billion**

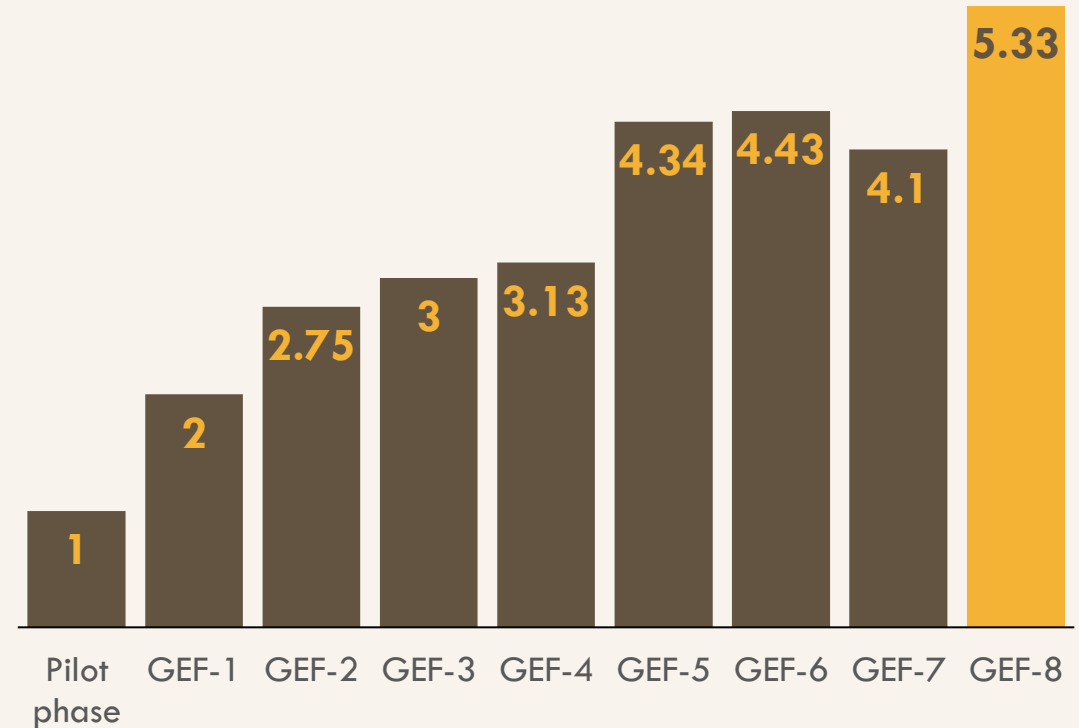
pledged by 39 donor nations

**Country 'STAR'**

allocation

GEF-8 strategy responds to conventions and takes an **integrated approach to systems transformation**

**GEF Replenishment Cycles**  
(billion USD)





# GEF-8 COUNTRY ENGAGEMENT STRATEGY



## Country Engagement Strategy (CES)

The Country Engagement Strategy builds on the past three decades of GEF's work focused on **empowering** and **supporting countries** to achieve higher impact with GEF resources.

It combines the activities of the very successful Country Support Program (CSP) with upstream engagement with countries.





## UPSTREAM TECHNICAL MEETINGS

Upstream Technical Dialogues provides:

- Technical and strategic support to GEF stakeholders and recipient countries to ensure the delivery of Global Environmental Benefits.
- Technical upstream missions to present the GEF-8 Programming Directions, the Integrated Programs, and the Focal Areas Strategies in a more direct way.
- Provide technical support to countries during portfolio development, project design, and project review to enhance the quality of projects at entry and ensure the strongest country portfolio that advances the GEF-8 Results Framework.



## NATIONAL DIALOGUES

National Dialogues convenes all relevant national stakeholders in a country to jointly discuss and decide the programming of GEF resources and to promote policy coherence within each country.

National Dialogues complement the Upstream Technical Dialogues, as necessary.



## GEF WORKSHOPS

GEF Workshops include:

- Expanded Constituency Workshops (ECWs)
- Stakeholder Empowerment Series (SESs)
- Thematic Workshops



## INTRODUCTION SEMINARS

Introduction Seminars provide training and relevant information for an enhanced understanding of the GEF, its policies and operations to new Agency staff, Operational Focal Points, selected stakeholders as well as new Convention Secretariat staff.



## CONSTITUENCY MEETINGS AND PRE-COUNCIL MEETINGS

Constituency Meetings and Pre-Council Meetings are the main tool for Council Members and Alternates Members within a constituency with all GEF focal points to review Council agenda items and prepare constituency official positions to be presented at the GEF Council Meetings.



## FINANCIAL SUPPORT TO GEF OFPS

Financial Support to GEF Operational Focal Points enables them to effectively oversee and monitor the GEF portfolio.

Access to these funds is optional.

## Gustavo Fonseca Youth Conservation Leadership Program

- Graduate Studies Support
- Support to Field work in Conservation
- Support to participate in International Policy Meetings
- Youth Leaders Summits





**Questions?**



# Multilateral Environmental Agreements

## GEF Introduction Seminar

Chizuru Aoki

September 9-10, 2024



# GEF's Unique Role



- Serves **6 multilateral environmental agreements** (MEAs) as financial mechanism
- Recent **expansion** of MEA mandates and fund arrangements
- Supports implementation of MEAs and goals through:



- Functions under **guidance/authority / decisions** from COP and is **accountable**:
  - Participation in negotiations and mandated events, GEF report highlighting response, response to Party inquiries
- **MoU** between COP and Council give effect to respective roles and responsibilities



Convention on  
Biological Diversity



MINAMATA  
CONVENTION  
ON MERCURY



Stockholm Convention  
on persistent organic  
pollutants (POPs)



United Nations  
Convention to Combat  
Desertification



United Nations  
Framework Convention on  
Climate Change

# Financial Mechanism and Family of Funds



Fund that serves BBNJ, CBD, CCD, Minamata Conv, Stockholm Conv, UNFCCC

Funds that serve UNFCCC

Funds that serve CBD

**GEF Trust Fund**

**LDCF**

**SCCF**

**NPIF Fund**

**GBF Fund**



**\$2.5 billion** for 520 projects,  
**\$10 billion** leveraged  
GEF-8: **\$1.2 billion - \$1.7 billion**

NPIF: **\$15.1 million** for 13 projects  
Mainstreamed into GEF Trust Fund

**CBIT Trust Fund**

GBFF: Established in 2023  
**\$110 million** for 4 projects  
and 18 PPG requests

**\$25 billion** for +5,000 projects, **\$145 billion** leveraged  
GEF-8 (July 2023 to June 2026): **\$5.33 billion**

**\$58.3 million** for 44 projects  
Mainstreamed into GEF Trust Fund

# Major Developments in 2024 and beyond

In addition to key MEA goals and targets by 2025, 2030, and beyond



GBFF established

→ 1<sup>st</sup> and 2<sup>nd</sup> GBFF Council

→ Projects and PPGs approved

Decision on global fund for benefit sharing from DSI @ COP16 (2024)

→ Options being discussed



Multilateral Climate Funds Joint Action Plan

→ Enhancing impact and streamlining access among GEF, GCF, CIF, and AF

Loss and Damage Fund being operationalized

Deadline for 1<sup>st</sup> Biennial Transparency Report in Dec 2024



BBNJ adopted in June 2023 with GEF as part of financial mechanism

→ GEF-8 \$34 million for ratification + early action, initial guidelines approved by Council

→ First set of projects approved in June 2024



Plastic treaty negotiation to be completed by December 2024

→ Options for financial mechanism under discussion



# Evolution of MEAs and GEF

- Confirmed and potential **expansion of GEF's mandate**
  - BBNJ, GBFF, and ongoing plastic negotiations
  - Council engagement to operationalize
  - Implications for GEF-8, GEF-9, and beyond
- **Evolution of fund and governance** arrangements with GBFF
  - **Non-sovereign support** (private, philanthropies)
  - **Modified governance** with more observers and groups
  - **Simplified** project cycle
  - Expansion of **family of funds** and options
- Full set of **blueprints emerging**
  - 2024: CBD COP 16, UNFCCC COP 29, CCD COP 16
  - COP guidance and decisions for replenishment and strategy development negotiations







**Thank you**

For any questions, please contact:  
[caoki@thegef.org](mailto:caoki@thegef.org)



# The Scientific and Technical Advisory Panel (STAP) to the Global Environment Facility (GEF)

## GEF Introduction Seminar 09 September 2024

Sunday A. Leonard

**STAP**

SCIENTIFIC AND TECHNICAL  
ADVISORY PANEL

*An independent group of scientists that advises  
the Global Environment Facility*

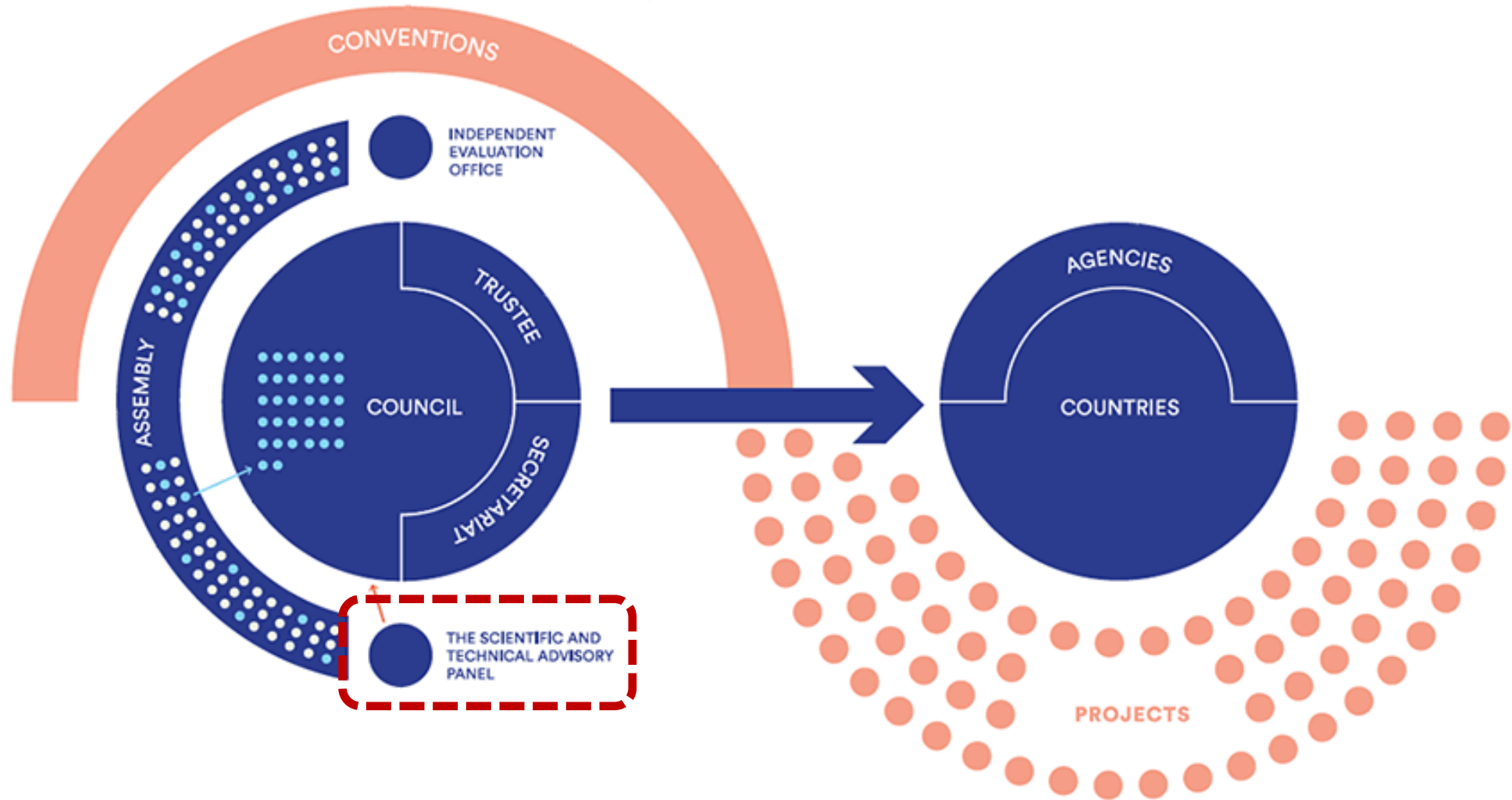


# What is STAP?



**STAP provides independent scientific and technical advice to the GEF on its policies, strategies, programs, and projects.**

# STAP in the GEF Partnership



# STAP Panel Members

STAP consists of a Panel of leading scientists/experts from across the globe, supported by a Secretariat hosted by UNEP, Washington, DC.



**Rosina Bierbaum, Chair**



**Mark Stafford Smith**  
Advisor



**Blake Ratner**  
Advisor



**Christopher Whaley**  
Advisor



**Jonathan Barnett**  
Climate Adaptation



**Ngonidzashe Chirinda**  
Climate Mitigation



**Miriam Diamond**  
Chemicals and Waste



**John Donaldson**  
Biodiversity



**Susanne Schmeier**  
International Waters



**Ermias Betemariam**  
Land Degradation

# STAP's role in the GEF Partnership



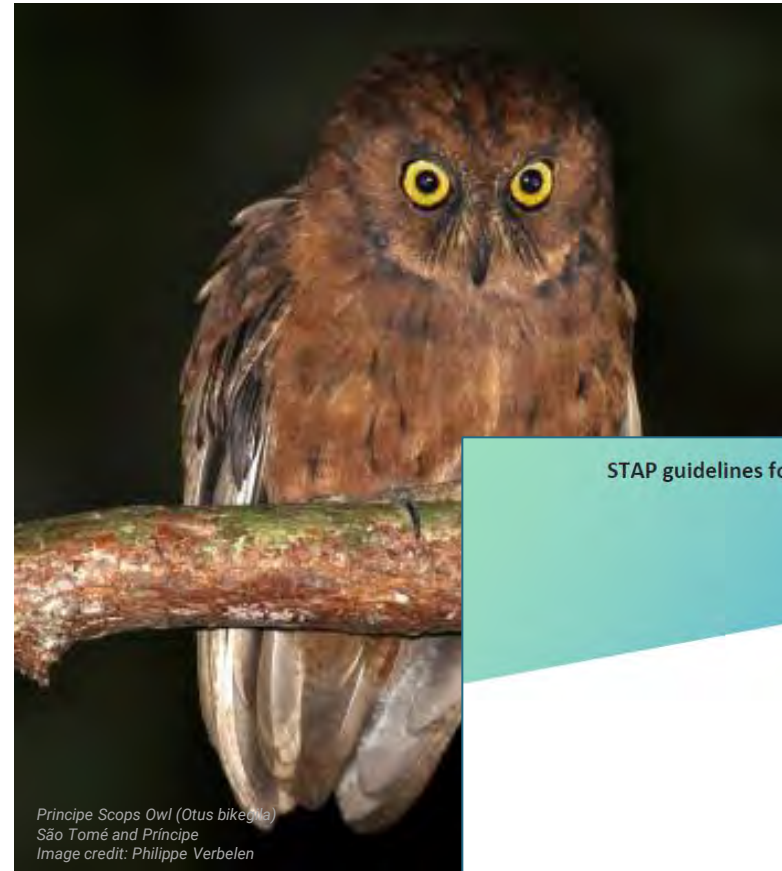
## Advisory

- Provide strategic science-policy advice
- Scan the horizon and bring in the latest knowledge to the GEF
- Interacts with other relevant scientific bodies and experts
- Take the scientific need of the GEF to the scientific community

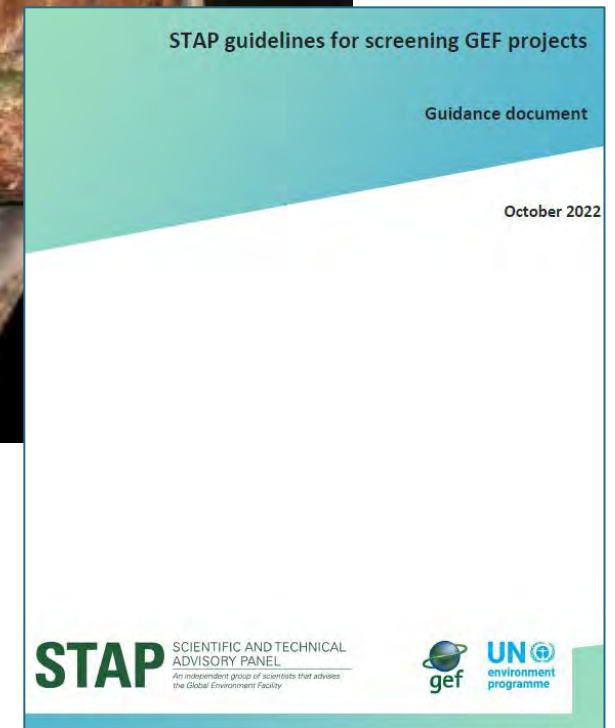
# STAP's role in the GEF Partnership

## Quality Control (Project Screening)

- Apply evidence-based principles for good project design
- Assess the quality of science and technology in proposals
- Help validate aspirations for innovation, durable outcomes, and transformation
- Advice on improvements to maximize global environmental benefits and enhance return on GEF's investments.
- Provide work program feedback to the GEF Secretariat



Príncipe Scops Owl (*Otus bikegala*)  
São Tomé and Príncipe  
Image credit: Philippe Verbelen

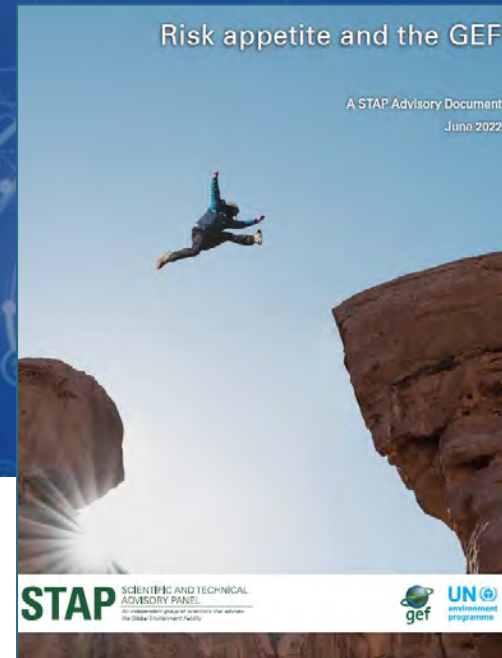


# STAP's role in the GEF Partnership



## Programmatic, policy, and operational support

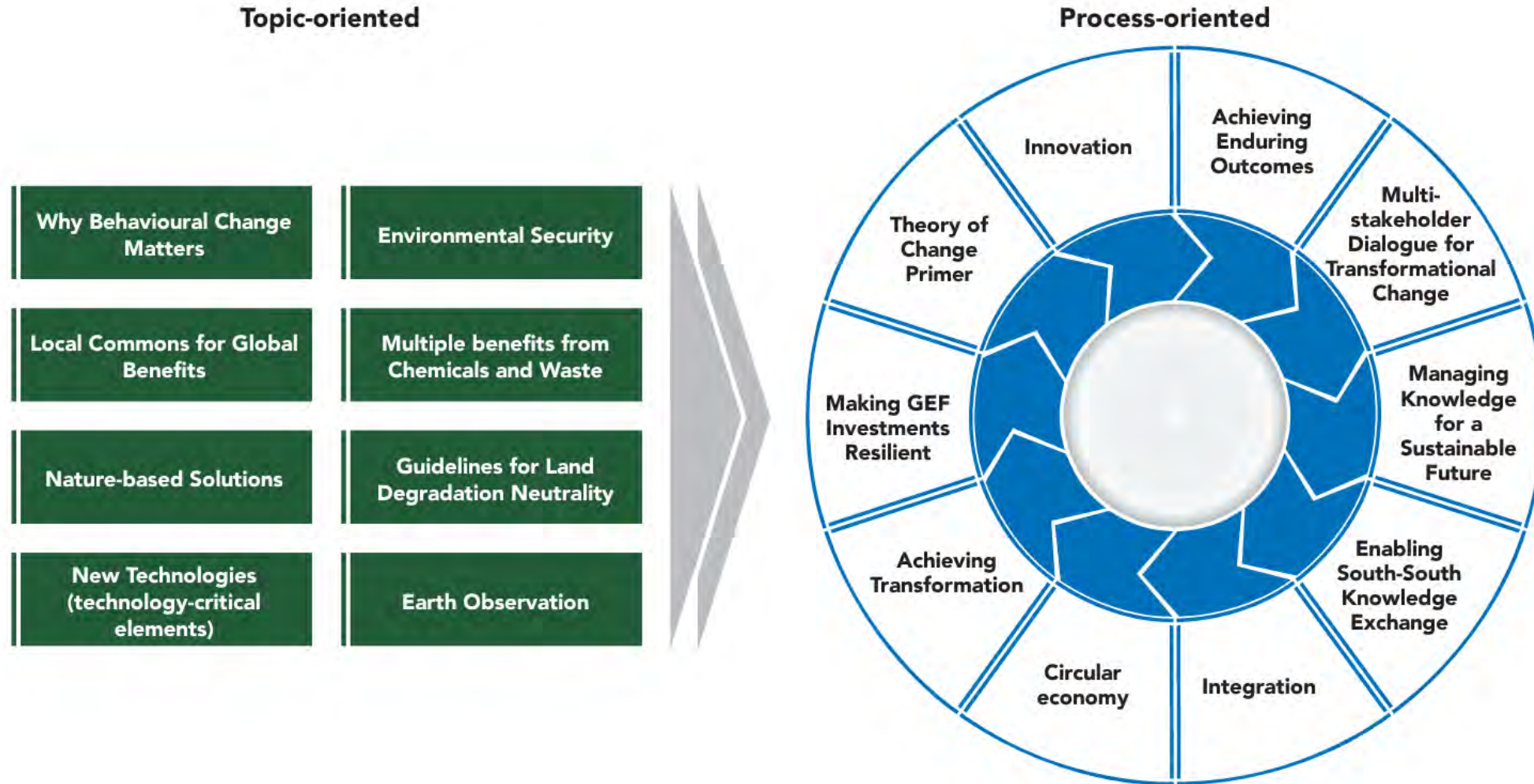
- Training, e.g., theory of change and PIF training
- Operationalization, e.g., Integrated Programs agency and child project selection
- Workshops and webinars, e.g., transformation and knowledge management and learning
- Policy and guidance, e.g., risk appetite working group





# STAP Advice/Publications

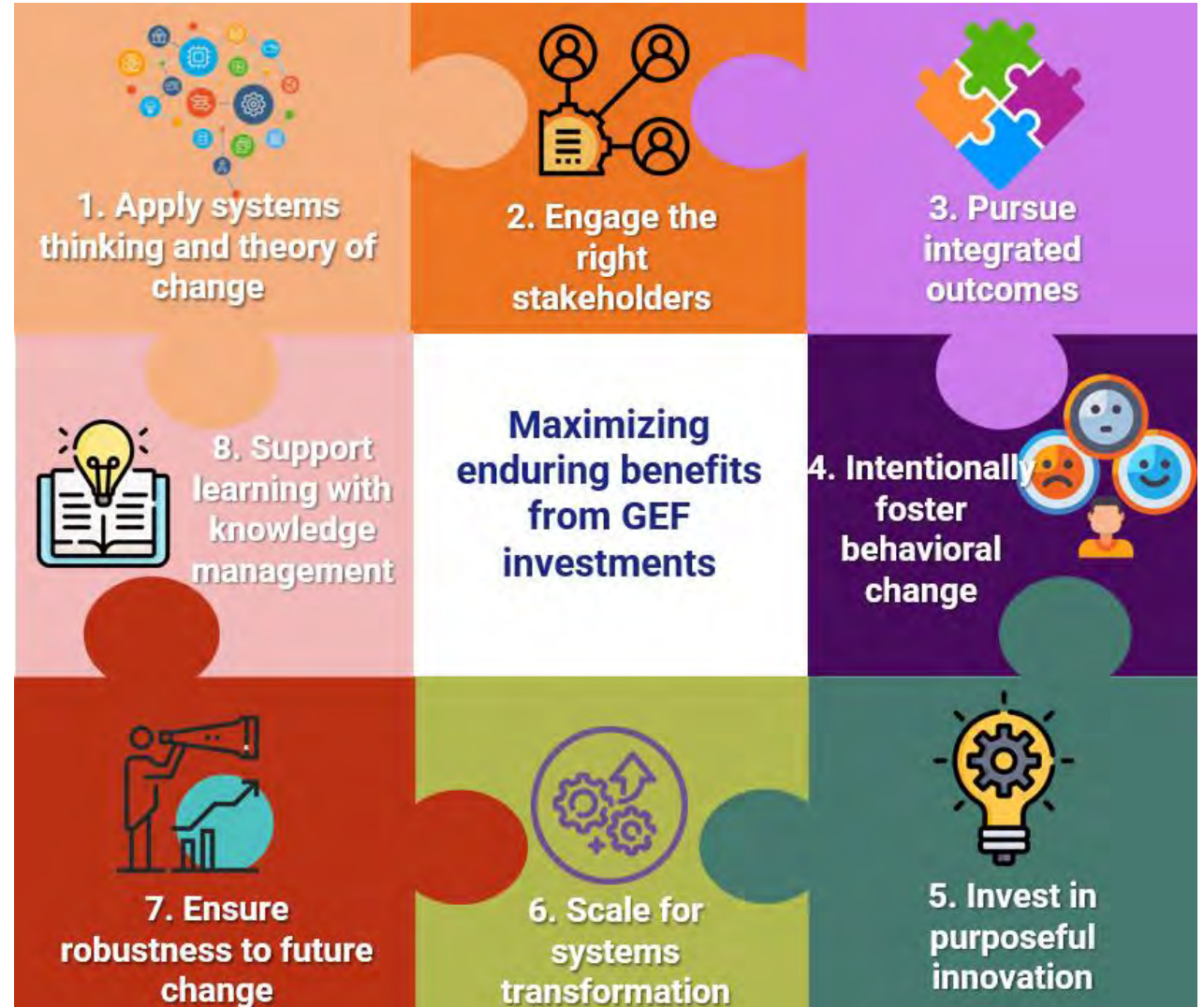
<https://stapgef.org/resources>

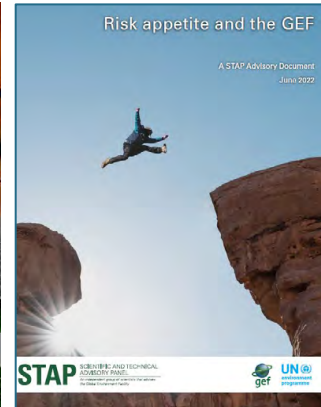
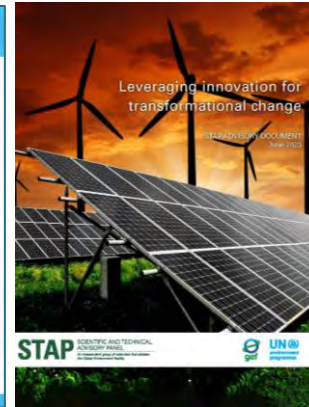
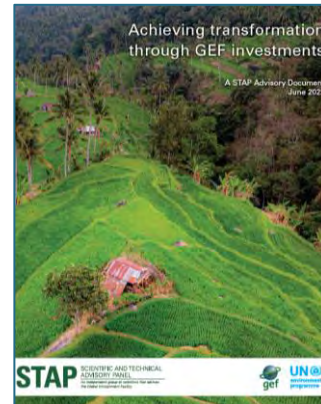
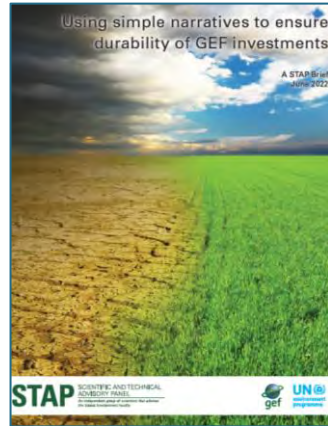
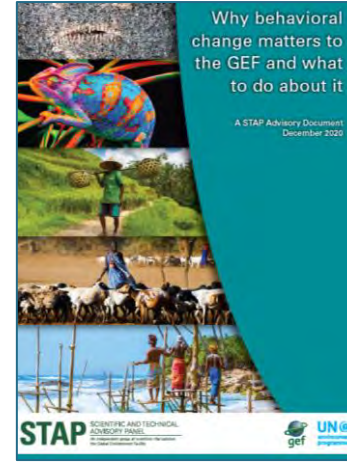
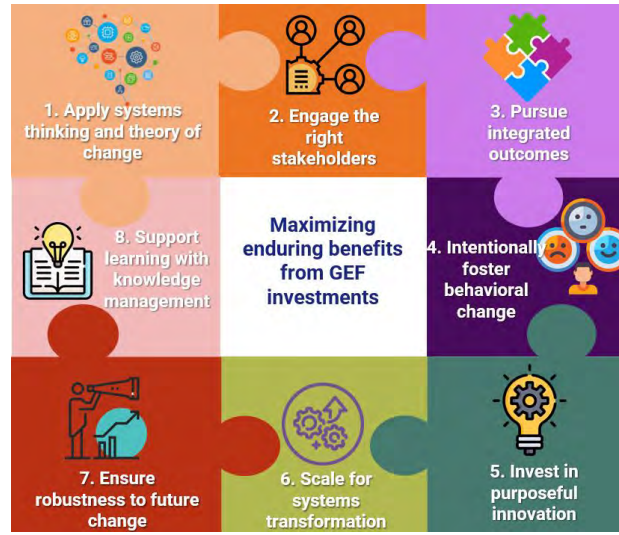
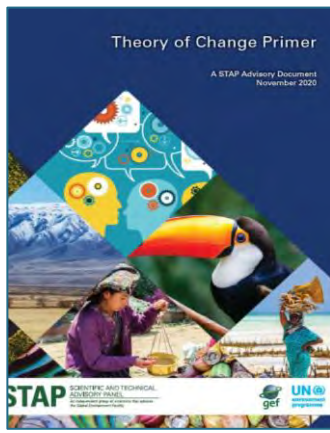


# Enabling Elements for Good Project Design

Applied consistently but lightly at the PIF stage in the *Project Rationale* and *Project Description*

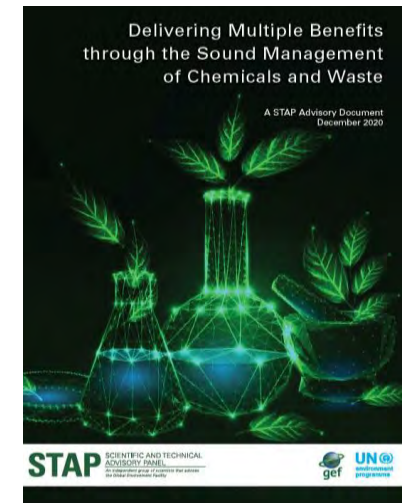
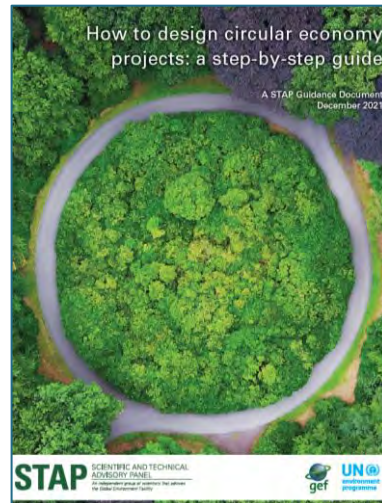
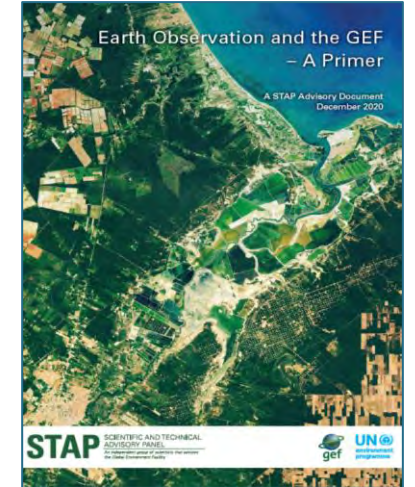
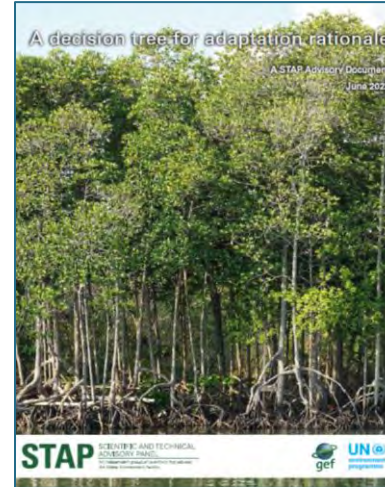
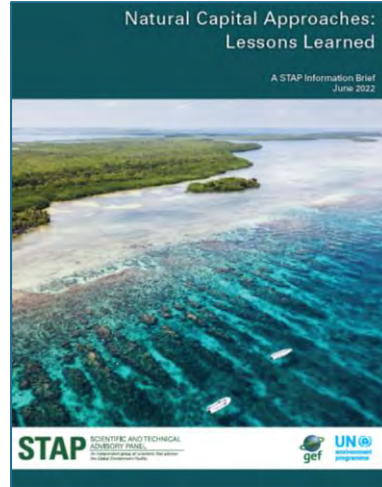
Then developed more fully by CEO endorsement (and in implementation)





# Other STAP Advice/Publications

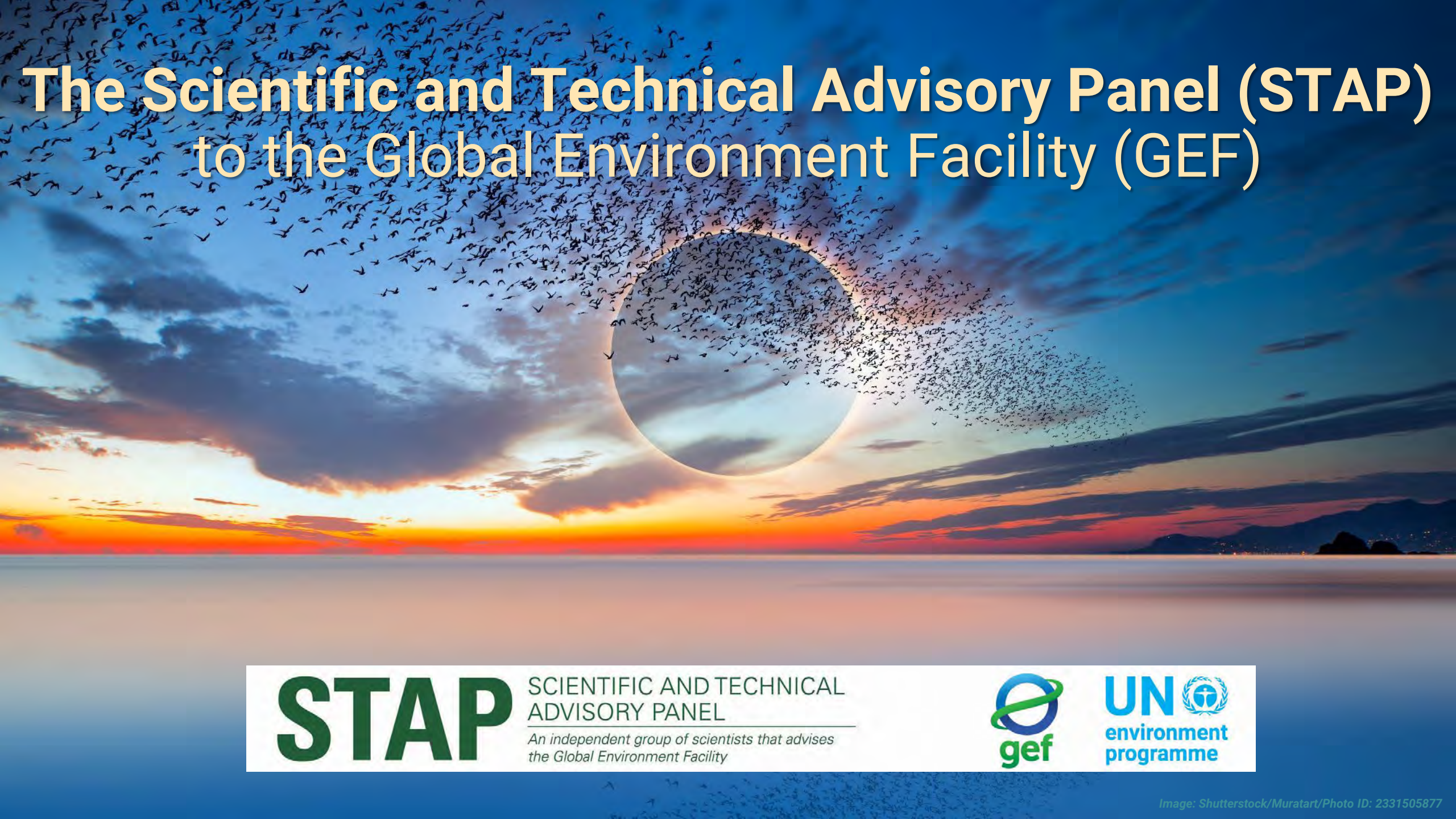
<https://stapgef.org/resources>



# Future Advice/Publications



- STAP GEF-9 Initial Perspective
- Risk guidance
- Blended finance
- Community-based approaches
- Drought and land degradation



# The Scientific and Technical Advisory Panel (STAP) to the Global Environment Facility (GEF)

**STAP**

SCIENTIFIC AND TECHNICAL  
ADVISORY PANEL

*An independent group of scientists that advises  
the Global Environment Facility*



**INTRODUCTION TO THE**



**Independent  
Evaluation Office**  
GLOBAL ENVIRONMENT FACILITY

**GEETA BATRA, DIRECTOR**

**September 9, 2024**

# Overview

1

Evaluation in the GEF

2

Evaluation Policy and Minimum Requirements

3

IEO data and evaluations

4

What's Next?

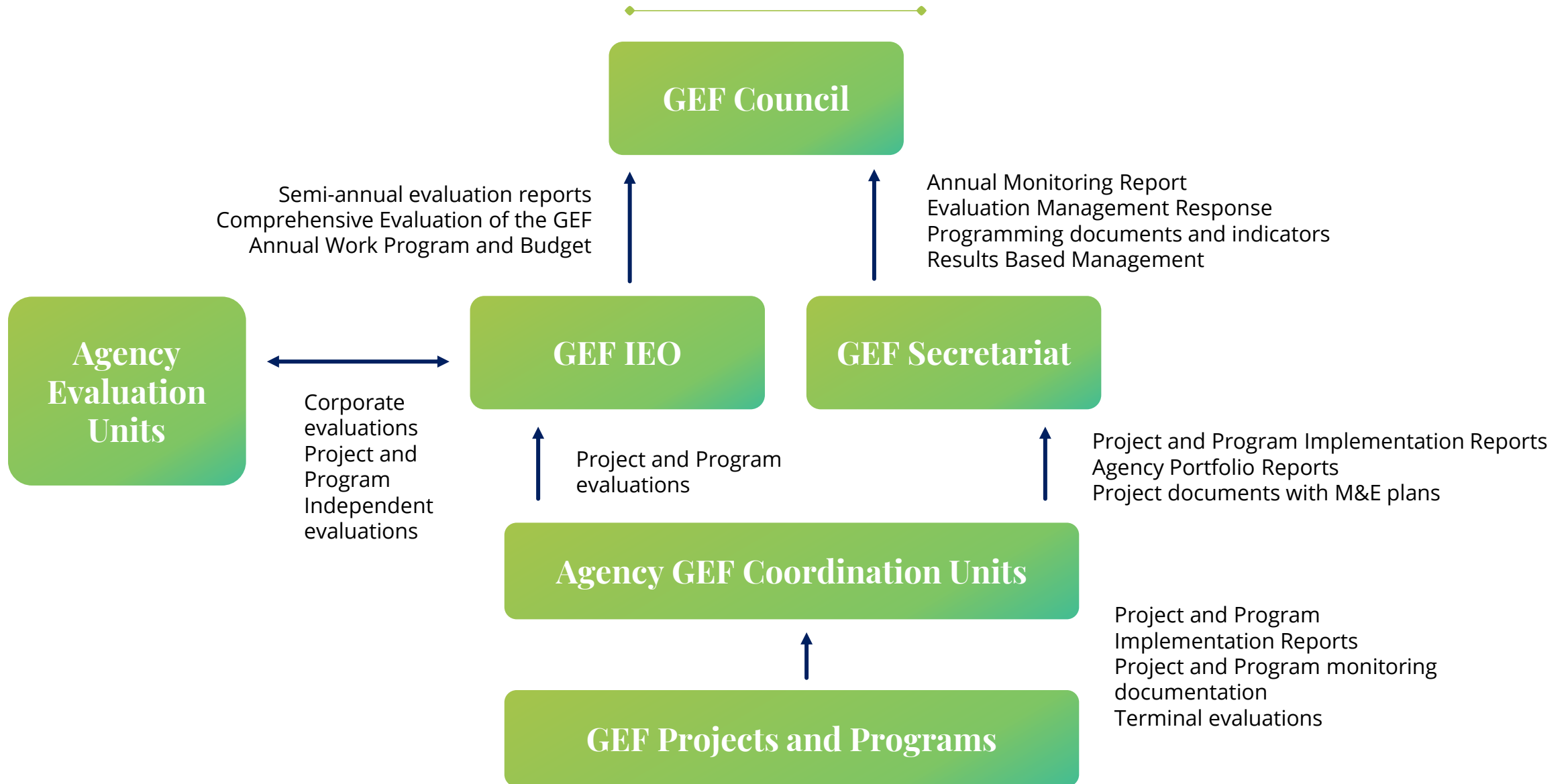




# Evaluation in the GEF



# Evaluation in the GEF



# We are the GEF IEO



## Accountability

To ensure  
transparency and  
impact



## Innovation

To help address evolving  
environmental challenges  
with evidence from fresh  
solutions



## Learning

To foster  
continuous  
improvement



- Independence is the cornerstone of the IEO's role within the GEF and refers to the IEO's autonomy and freedom from external influence, ensuring unbiased evaluations of GEF performance and operations.





# Our mandate

- + We evaluate GEF programs
- + We report to the Council on evaluation findings and lessons from GEF Interventions
- 🔍 The IEO evaluates the relevance, effectiveness, efficiency, and sustainability of GEF projects and programs, providing critical insights that **guide strategic direction** and **inform funding decisions** during the replenishment process.



Balancing **Accountability** and **Learning** at the GEF



# GEF Independent Evaluation Office (IEO)



**E**nhance global environmental benefits through excellence, independence, and partnership in monitoring and evaluation.

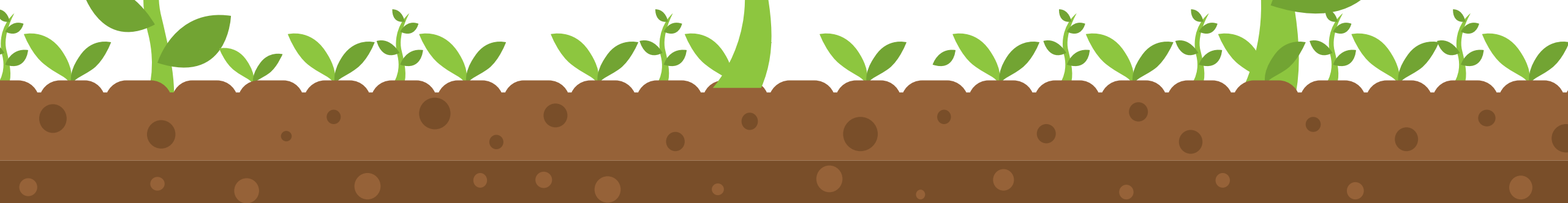
Mission

1. Impartiality
2. Professionalism
3. Transparency

Principles

- Independent evaluation
- Setting of minimum standards (normative)
- Quality control (oversight)
- Sharing evaluative knowledge

Functions



# Celebrating 20 Years

## The M&E unit

was made autonomous of the GEF Secretariat



19  
96

Initially established as an M&E unit within the GEF Secretariat

20  
03

”

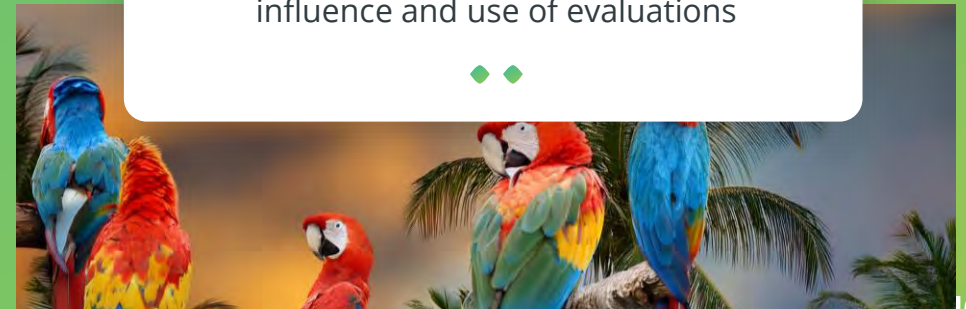
The Office was renamed as GEF Independent Evaluation Office

20  
13

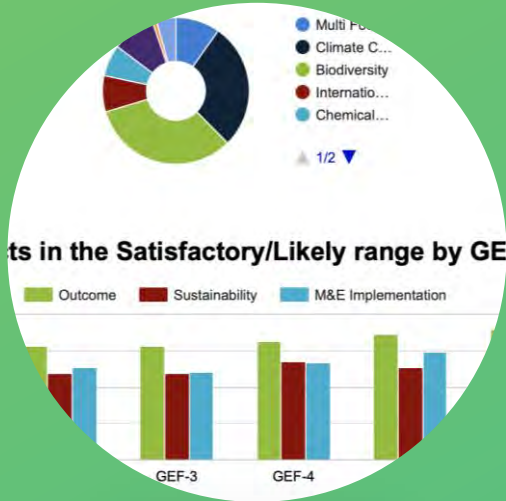
20  
23



Office celebrates two decades of influence and use of evaluations



# Evaluations



## Data & Ratings



## Online Training

# OPS



## Learnings



## Books & Academic Papers



# What we do?



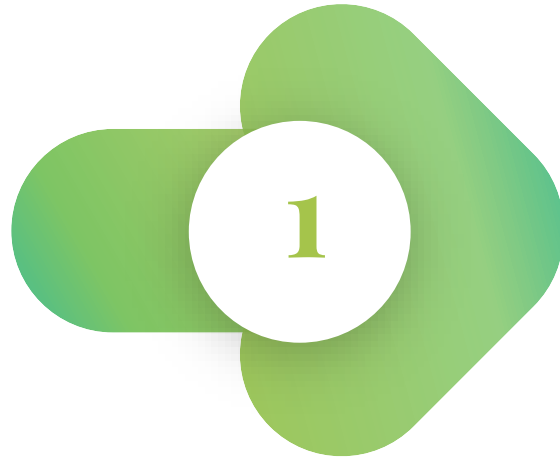


# Evaluation Policy





# The GEF Evaluation Policy



**Defines the concepts, roles, types, use and follow up of evaluation within the GEF**



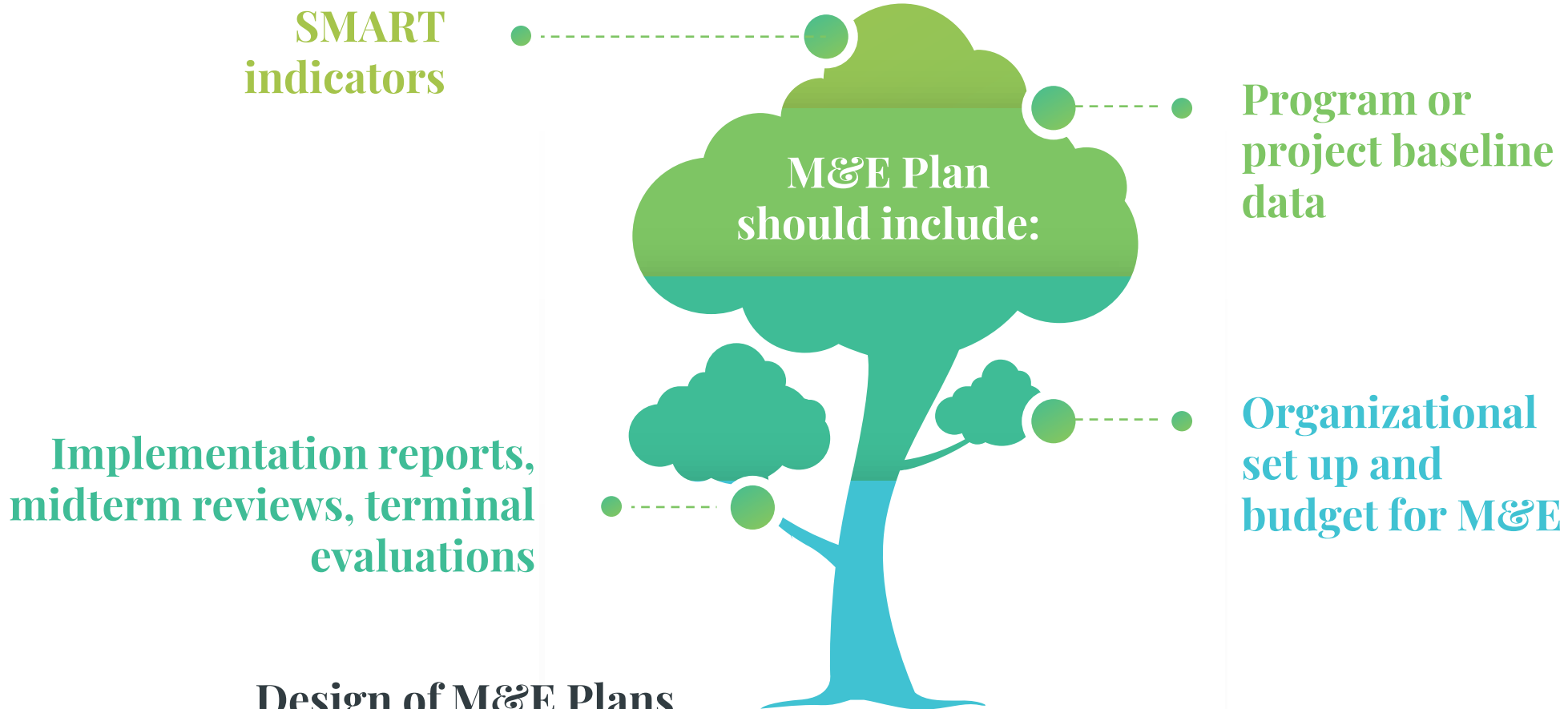
**Defines the institutional framework and responsibilities**



**Indicates the minimum requirements covering:**

- design of evaluation plans
- application of evaluation plans
- project and program evaluations
- engagement of operational focal points in evaluations

# Minimum Requirement 1



## Design of M&E Plans

Concrete and fully budgeted M&E plan by CEO endorsement for FSP/ CEO approval for MSP/ by PFD approval for programs.

# Minimum Requirement 2



**Use of SMART indicators for process and implementation**



**Use of SMART indicators for results**



**Baseline is fully established, data are compiled to review progress, evaluations are undertaken as planned**



**Organizational set up for M&E is operational, its budget is spent as planned**

## **Implementation of M&E Plans**

**Project/program monitoring and supervision will include execution of M&E plan**

# Minimum Requirement 3



## Evaluations should:



Be independent of project/program management or reviewed by GEF Agency evaluation unit



Apply international evaluation standards and minimum requirements of this Policy



Assess, as a minimum, outputs and outcomes, likelihood of sustainability, compliance with Minimum Requirements 1 & 2



Contain basic project/program data; lessons for broader applicability



Should be sent to GEF IEO within 12 months of completion of project/program

## Project/Program Evaluations:

All FSP/MSP projects and all programs will be evaluated at the end of implementation



# Terminal Evaluation



## How to access:

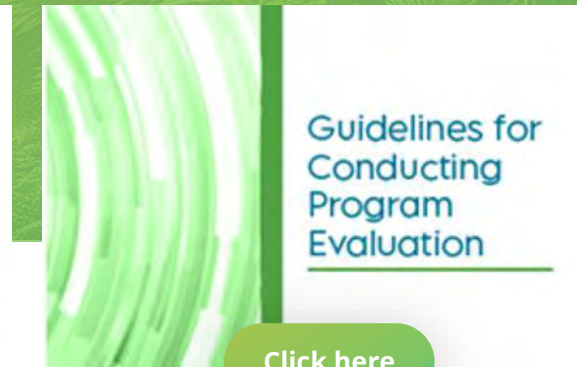
Terminal  
Evaluation  
Guidelines

Program  
Evaluation  
Guidelines

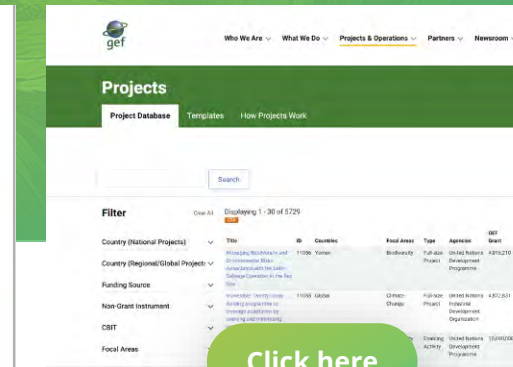
Terminal  
Evaluations



Click here



Click here



Click here

# Minimum Requirement 4



- M&E plans will specify how OFPs will be engaged
- GEF Agencies will inform OFPs on M&E activities
- OFPs will be informed on midterm reviews, terminal evaluations, receiving drafts for comments and final reports
- OFPs will be invited to contribute to the management response (where applicable)
- GEF Agencies will keep track application of this requirement in their GEF-financed projects and programs



# Follow Up to Evaluations



”

A management response is required for all evaluations and performance reports presented to the GEF Council by the GEF IEO. It is coordinated by GEF SEC with inputs from other GEF stakeholders.



”

GEF Council takes into consideration the evaluation findings and the recommendations as well as the management response and action plans in the decision.



”

GEF IEO reports on the progress of actions towards implementation of the decision annually through the Management Action Record (MAR)



# IEO Data And Evaluations





# Data by Country and other resources on the IEO website

[www.gefio.org/data-ratings](http://www.gefio.org/data-ratings)



*Disclaimer: Country borders or names do not necessarily reflect the GEF IEO official position. This map is for illustrative purposes and does not imply the expression of any opinion on the part of the GEF IEO, concerning the legal status of any country or territory or concerning the delimitation of frontiers or boundaries.*



- 80% Satisfactory Outcome Rating (n= 292)
- 68% Satisfactory Sustainability Rating (n= 276)
- 80% Satisfactory Implementation Rating (n= 241)
- 82% Satisfactory Execution Rating (n= 250)
- 67% Satisfactory M&E Design Rating (n= 272)
- 66% Satisfactory M&E Implementation Rating (n= 172)

# Types of Evaluations



Project

Program

Country Cluster

Impact

Cross-cutting  
+ Thematic

Process +  
Performance

Ad-hoc Reviews

OPS



Different TORs, scopes,  
frequency, audiences,  
methodologies, lead

# How We Do It



Qualitative  
through  
portfolio  
reviews, case  
studies



Quantitative  
including  
GIS, Remote  
Sensing, Big  
Data  
Analytics



Complex  
Systems



Methodological Approaches



# Evaluations



Evaluation of GEF Support in Fragile and Conflict-Affected Situations (2020)



November 2020



January 2022



November 2022



November 2022

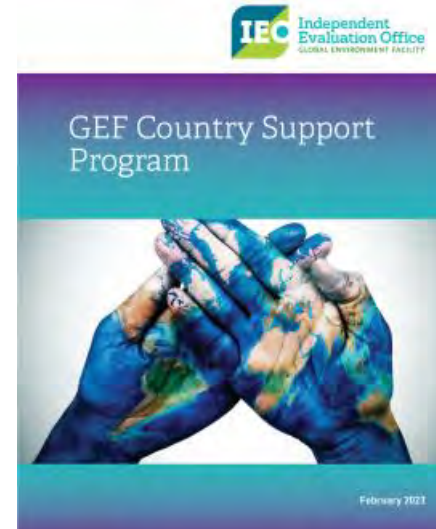


January 2022



Volume 1: Main Report

August 2022



February 2021



Last Updated on May 2021

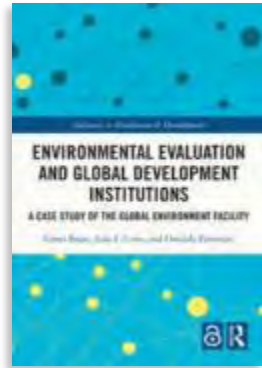


# Knowledge Management



## Books Published

- ✓ *Transformational Change for People and the Planet*  
(GEF IEO Director and Deputy Director. Springer)
- ✓ *Environmental Evaluation and Global Development Institutions: A Case Study of the Global Environment Facility*  
(Geeta Batra, Juha Uitto, Osvaldo Feinstein. Taylor & Francis Group)
- ✓ *Dissemination of OPS7-Exec summaries in English, French, Spanish.*



## Conferences, events and networks

- ✓ International Conference on Evaluating Environment and Development (March 5-7, 2024)
- ✓ Expanded Constituency Workshops
- ✓ Environmental Dimensions of Sustainable Development (United Nations Evaluation Group)



## Training

- ✓ Training module on evaluation at the nexus of the environment and development for the International Program for Development Evaluation Training (IPDET, 2022, 2023, 2024)
- ✓ Online training on environmental evaluation



# Communicating Evaluation Findings



+ A picture is worth a thousand words



15+  
videos

EvalVision series  
showcasing evaluation  
results



Engaging storytelling



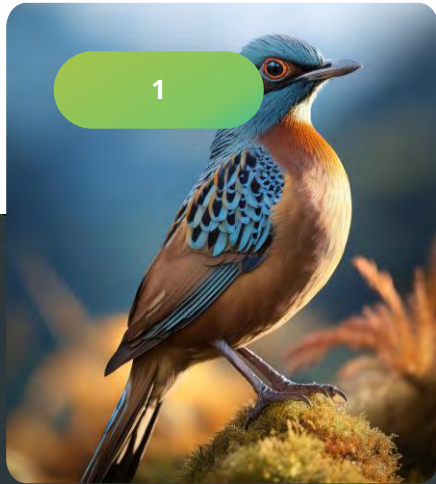


# What's Next?

OPS8 progress →

## The 'Eighth' Comprehensive Evaluation of the **Global Environment Facility**

OPS8 will assess the overall performance and competitive advantage of the GEF and provide evidence-based analysis and recommendations to guide the GEF's replenishment process.



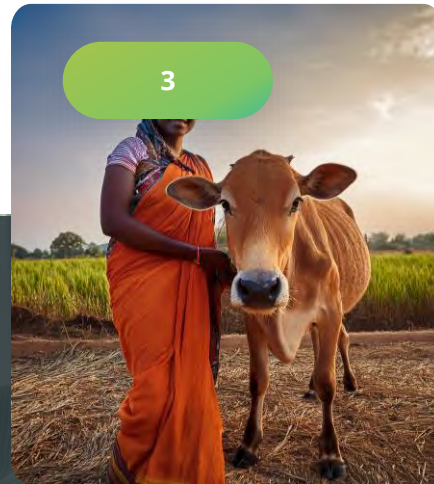
### Relevance and coherence

Evaluates alignment with global environmental priorities and country needs



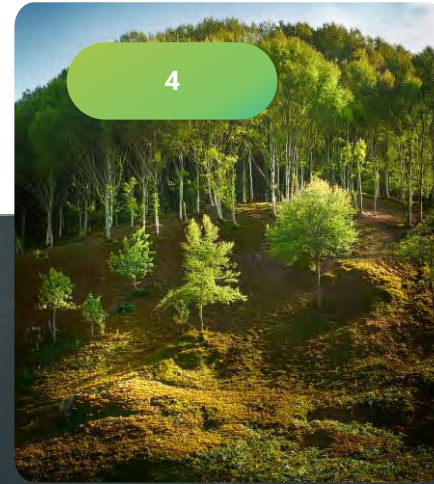
### Results, Impact, and Performance

Assesses the effectiveness and outcomes of GEF projects



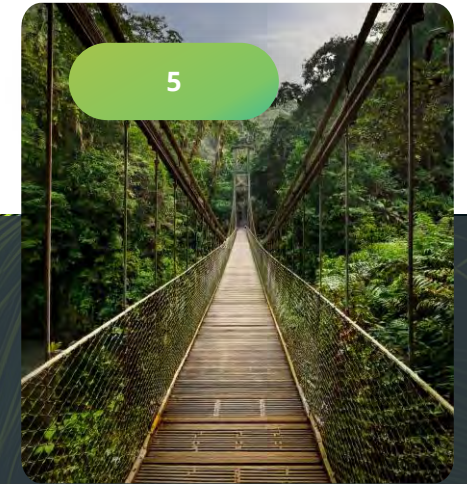
### Sustainability

Examines the long-term viability of project outcomes



### Efficiency

Reviews resource access and use, cost-effectiveness, and processes



### Inclusion, Innovation and Risk

Looks at GEF's ability to innovate, support inclusion & manage risks



# Proposed Work Program for GEF-8 period

## FY23

COVID-19

Water Security

Annual Performance Report 2023

Report GEF IEO MAR

Community-focused approaches

Climate warning and information systems

Climate Change Mitigation

Behavioral Change

Evaluation of policy influence interventions

LDCF/SCCF: Annual Evaluation Report 2023

Updated Guidance Document: Evaluation in the LDCF/SCCF

## FY24

Socio Economic Co Benefits

SCCE on Drylands

Sustainable Cities program

Combating Illegal Wildlife Trade

Integrated interventions in SIDS

LDCF/SCCF: 2024 LDCF program evaluation

Learning from Challenges

Project efficiency in GEF interventions

The Capacity-building Initiative for Transparency (CBIT)

GEF Support to Nature Based Solutions (NbS)

LDCF/SCCF: Annual Evaluation Report 2024

## FY25

Country Engagement Strategy

Small Grants Program

Food Security & Commodities IAP

Annual Performance Report 2024

Implementation of the Private sector Strategy

Focal area assessment

Formative Evaluation of the GEF-7 and GEF-8 Impact Programs

Governance of the GEF

Eighth Comprehensive Evaluation of the GEF (2022-2025)

Final report to council (FY 2026)

GEF Results Based Management

Implementation of GEF Policies

Knowledge Management in the GEF

LDCF/SCCF AER2025

# What is your role?



What is your role in **Evaluation**?

Here is your 'opportunity' to contribute! We'd like to know from **you** across any of these buckets.

1

Relevance & Coherence

2

Results, Impact & Performance

3

Sustainability

4

Efficiency

5

Inclusion, Gender, Private Sector Participation, Risk, Innovation



Thank You



Independent  
Evaluation Office  
GLOBAL ENVIRONMENT FACILITY

[gefevaluation@thegef.org](mailto:gefevaluation@thegef.org)



[gefieo.org](http://gefieo.org)



A top-down view of a cup of coffee on a burlap surface. The cup is white with a blue rim and contains a golden-brown coffee. Surrounding the cup are various coffee-related items: coffee beans, cinnamon sticks, and other spices. A green rectangular overlay is positioned on the right side of the image, containing the text "Coffee Break" in white and "Say Hello" in orange.

# Coffee Break

*Say Hello*



# CIVIL SOCIETY ENGAGEMENT

# Civil Society Organizations (CSO) Network



A voluntary network of civil society organizations established in 1995



Organized around Regional Focal Points, Chair, Vice Chair and a Network Secretariat



Evolving mandate in the GEF Governance



Enhancing the engagement of civil society in the work of the GEF



Providing feedback to the GEF Council in the development and adoption of policies and guidelines



Supporting and leading activities such as CSO consultations and workshops, as well as the GEF Assemblies



# Indigenous Peoples Advisory Group (IPAG)



- ✓ Provides guidance and advice to the GEF on policies, project design, financing options, and monitoring and evaluation metrics
- ✓ Raising awareness on the GEF and programs related to Indigenous Peoples in international, multilateral fora

# GEF GENDER PARTNERSHIP - GGP

## MEMBERS

- Gender focal points from each of the GEF's 18 Implementing Agencies
- Gender leads of the Secretariats of the international environmental conventions that the GEF serves.



## WORK AREAS

- ❖ Capacity-building and learning
- ❖ Data, tools, indicators
- ❖ Knowledge, best practices
- ❖ Awareness-raising, communications



# SMALL GRANTS PROGRAM - SGP

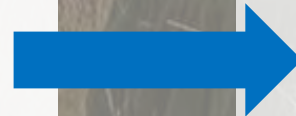


**Delivers Global Environmental Benefits through community-based initiatives**  
**"Local action, global impact"**

Corporate program since 1992.

Provides grants and capacity development to CSOs and CBOs.

Focus on Indigenous Peoples and Local Communities, women, youth and other vulnerable populations.



## New SGP 2.0

### Diversify

- FAO and CI selected as additional SGP Implementing Agencies to UNDP

### Expand

- Increased financing to civil society (\$155M in GEF-8)
- \$135M Core resources to all eligible GEF countries

### Innovate

- Launching two new CSO initiatives
  - CSO Challenge Program
  - Microfinance Initiative

# Inclusive Conservation Initiative (ICI)

The GEF-7 **Inclusive Conservation Initiative** funds Indigenous Peoples organizations to protect biodiversity.

It grants \$1-2 million to nine organizations across 13 countries and promotes knowledge exchange, training, and international engagement, all directed and governed by Indigenous communities.



# INCLUSIVE GEF ASSEMBLY CHALLENGE PROGRAM

**OBJECTIVE:** Inclusive engagement of civil society and marginalized communities as key actors in delivering adaptation and environmental benefits

## Objectives

## Approach



*Recognize role of CSOs, Indigenous Peoples, youth, and women and girls in delivering inclusive environmental benefits*

**Recognition at GEF Assembly and rigorous selection process**



*Facilitate a collaboration platform for partnership development, knowledge exchange, peer learning and capacity building*

**Coordination and knowledge platform (launched by UNIDO)**



*Support high impact and innovative initiatives to achieve full potential in delivering adaptation and environmental benefits*

**Implementation support (up to \$100k) for each initiative**

# The GEF Fonseca Leadership Program

The GEF Program aims to train over 100 conservation professionals in the next 4 years that will serve the GEF partnership in its goals to assure global environmental sustainability.

1. Training and capacity-building of young conservation leaders
2. Direct support to young leaders for participation in international events related to GEF business
3. Yearly Global Youth Leadership Summits in GEF regions



# TRAINING AND CAPACITY-BUILDING OF YOUNG CONSERVATION LEADERS

## Selected Partners for Global Coverage of GEF regions

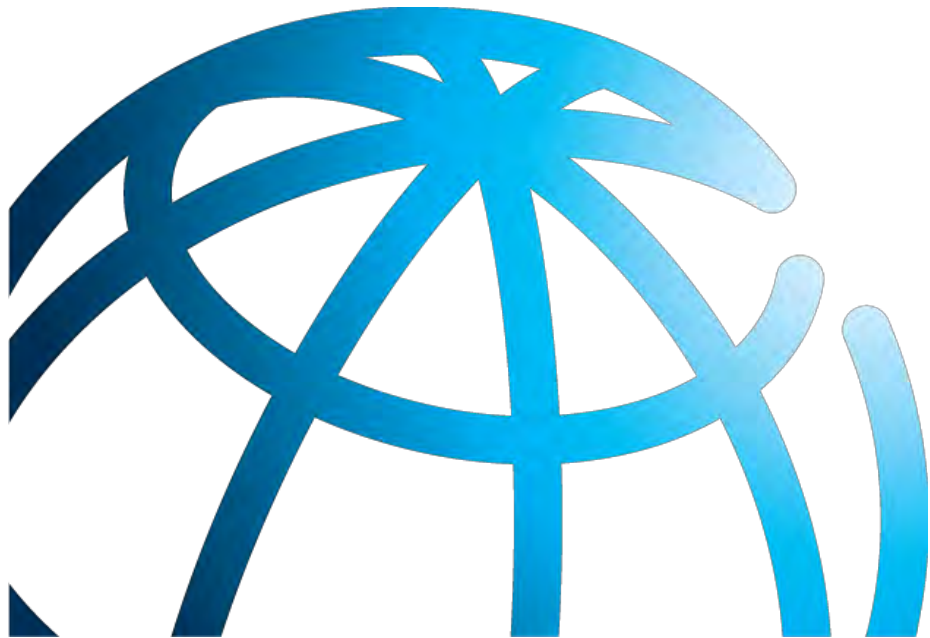


Global





**Questions?**



GEF Introduction Seminar  
September 9 - 10, 2024  
Trust Funds and Partner Relations (DFTPR)  
Development Finance (DFi)

**GEF Governance and Structure**

**Trustee Roles and Responsibility**

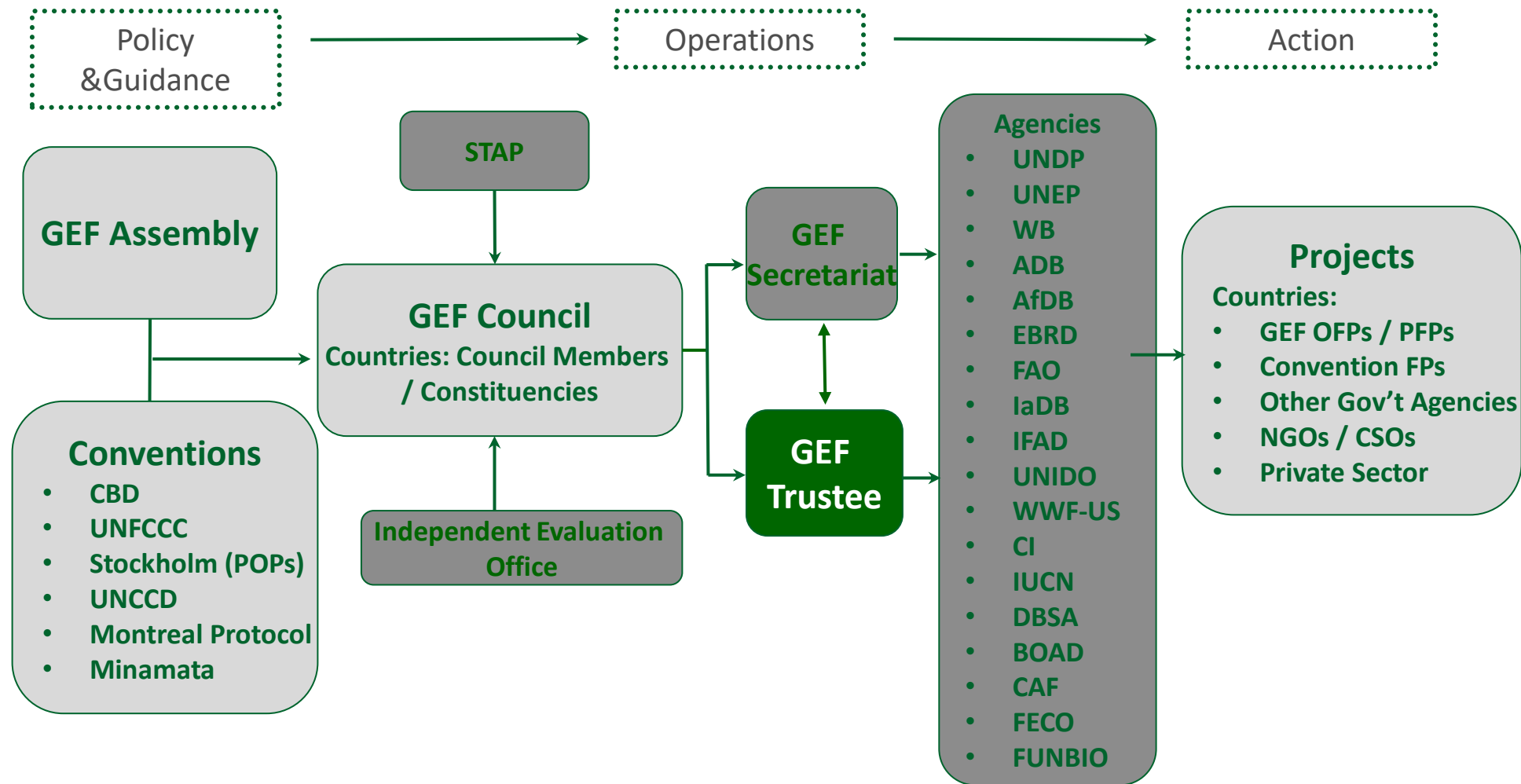
**Resource Mobilization, Financial Management and Reporting**

**Financial Procedure Agreements**

**GEF Trustee team and contact information.**



# GEF Governance and Structure



## Annex B of GEF Instrument

- Trustee's role and fiduciary responsibilities are set forth in the **GEF Instrument**, Annex B.

## Resource mobilization

- Trustee co-chairs the **GEF Replenishment negotiations** for mobilizing resources through the established replenishment process

## Investment of its liquid assets

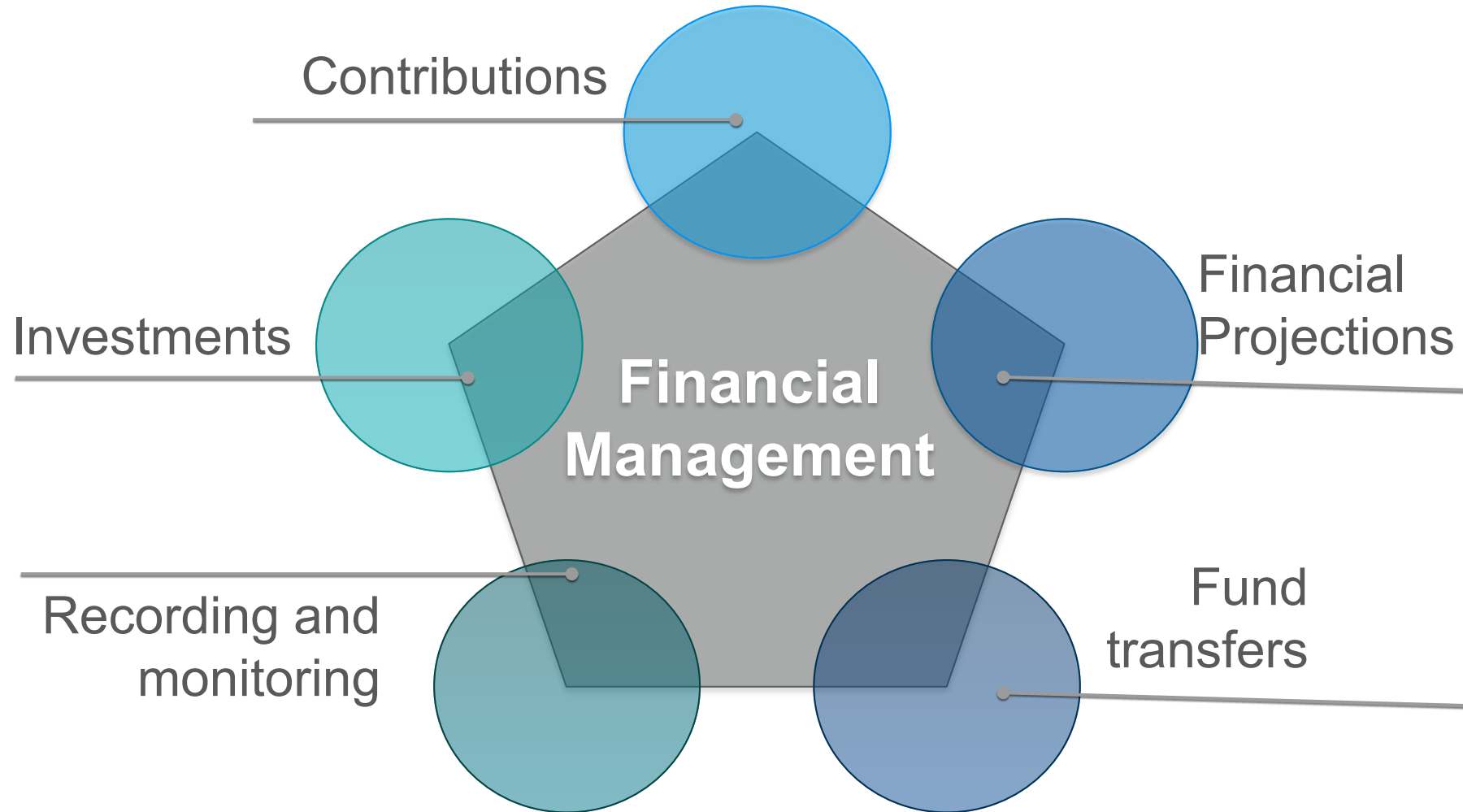
- **Manages the liquid assets** of the GEF Trust Fund and invests according to the IBRD's investment management principles, in a commingled investment portfolio

## Financial management

- Trustee **holds funds in trust** and **manages them for the purpose** provided under the GEF Instrument and decisions of the Council

## Reporting and compliance

- Ensure **compliance with Instrument** and other legal documents





## ❑ Investment Management of GEF Trust Fund Resources

- GEF Trust Fund resources are managed in a single, commingled investment portfolio (the “pool”).
- Preservation of capital is the primary investment objective, while optimizing investment returns and maintaining adequate liquidity.
- GEF resources are invested in asset classes with different tenures as per GEF’s liquidity needs for downstream activities.

## ❑ Sustainable and Responsible Investing in the context of GEF Portfolio

- Inclusion of Environmental, Social and Governance (ESG) factors in investment decisions.
- Given GEF’s unique positioning and mandate in the environment and social space, ESG factors have been incorporated in investment decisions.
- A dedicated Sustainable Bond Strategy for the GEF was implemented in 2021.
- Trustee reports investment performance, ESG rating, and Impact report for the GEF portfolio to the GEF Council.

Legal document governing the business relationship between IBRD as Trustee of the GEF Trust Fund and the GEF Agencies setting the definitions and rules for:

- Commitment of funds by Trustee
  - Transfer of funds to GEF Agency
    - Use of funds by GEF Agency
      - Reflows vs. Refund from GEF Agency to the Trustee
        - Financial reporting by Agency

**I Agree**



## Reporting under the FPA

Project approvals, cancellations and closures

Fee approvals and cancellations

Investment income, refunds from closures, reflows  
from Non-Grant Instruments

Annual financial statements and audit reports





Reach us at [geftrustee@worldbank.org](mailto:geftrustee@worldbank.org)



Website: [fiftrustee.worldbank.org](http://fiftrustee.worldbank.org)

## **Team Lead – Client relations, Replenishment and Portfolio management:**

- Jane M. Mwebi ([jmwebi@worldbank.org](mailto:jmwebi@worldbank.org))

## **Contribution management and Agency liaison:**

- Thejobala Paithoori Sethuraman ([tsethuraman@worldbank.org](mailto:tsethuraman@worldbank.org))
- Ramachandran Chidambaran ([rchidambaran@worldbank.org](mailto:rchidambaran@worldbank.org))
- Jorge Alberto Fuentes Lanza ([jfuenteslanza@worldbank.org](mailto:jfuenteslanza@worldbank.org))

## **Foreign Exchange management and Investment management**

- Zan Jin ([zjin4@worldbank.org](mailto:zjin4@worldbank.org))

## **Disbursement management and Internal Controls:**

- Thejobala Paithoori Sethuraman ([tsethuraman@worldbank.org](mailto:tsethuraman@worldbank.org))
- Ramachandran Chidambaran ([rchidambaran@worldbank.org](mailto:rchidambaran@worldbank.org))
- Chalida Chararnsuk ([cchararnsuk@worldbank.org](mailto:cchararnsuk@worldbank.org))

## **Analytics and Reporting:**

- Birama Nayagam Subramanian ([bsubramanian@worldbank.org](mailto:bsubramanian@worldbank.org))

## **Program support:**

- Krishna Thapa ([kthapa@worldbank.org](mailto:kthapa@worldbank.org))

**Thank you**

**Q&A**





# Communications: Role and Strategic Approach



# GEF AND COMMUNICATIONS

- What we do
- Partnership Strategy
- Policy on Communication and Visibility



# GEF Communications



# GEF COMMUNICATIONS – WEBSITE





# GEF COMMUNICATIONS – STORY TELLING



Who We Are ▾

What We Do ▾

Projects & Operations ▾

Partners ▾

Newsroom ▾

Events



## Bridging local realities and global climate goals

FEATURE STORY / November 10, 2023



Photo courtesy of Julianny Minyety Méndez

**Julianny Minyety Méndez** is a sustainable development expert from the Dominican Republic who will be part of her country's delegation to COP28, with support from the Global Environment Facility and Climate Reality Project America Latina. In an interview, she shared how her experience growing up in a hurricane-prone area has shaped her thinking about climate vulnerability and the world's responsibility to help those affected by a crisis they did not contribute to.

## In the Seychelles, financial innovation buoys ocean health

FEATURE STORY / September 12, 2023



Photo credit: ReneGamper/Shutterstock

The Seychelles is known for its isolated beauty, with pristine beaches, turquoise waters, and lush tropical rainforests.

Over the past decade, the Indian Ocean archipelago spanning 115 granite and coral islands has also emerged as a pioneer of using innovative finance for ocean health.

With long-term support from the Global Environment Facility, the Seychelles has turned its vast ocean territory into leverage that has allowed it to protect its natural assets, reduce its economic pressures, and open up a whole new category of financing for others to follow.



# GEF COMMUNICATIONS – MEDIA RELATIONS



**REUTERS** Countries adopt multibillion-dollar fund to protect nature



**The Guardian** Developed countries urged to 'step up' contributions to global nature fund



**新华社**  
XINHUA NEWS AGENCY  
New global biodiversity fund launched in Vancouver



**POLITICO** Top environmental fund chief calls on countries to defund activities 'destroying' nature



**Diálogo Chino** Top environmental fund calls for more direct funding to communities



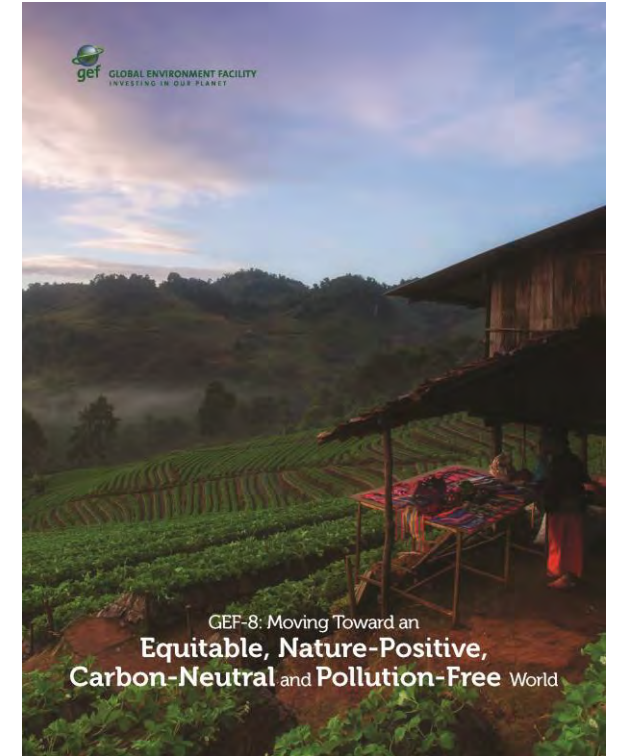


# GEF COMMUNICATIONS – EVENTS & PAVILIONS





# GEF COMMUNICATIONS – PUBLICATIONS





# GEF COMMUNICATIONS – SOCIAL MEDIA



A wide panoramic image showing a lush green landscape with a river or lake winding through it, leading to a large, shallow, turquoise-colored body of water, possibly a lagoon or bay, under a bright sky.



The GEF logo, consisting of a stylized globe and the lowercase letters 'gef'.

**Global Environment Facility**


Tackling our planet's most pressing environmental problems.

Environmental Services · Washington, DC · 100K followers · 51-200 employees











# GEF COMMUNICATIONS – FOLLOW AND TAG THE GEF



Connect with us on social media

Follow us and get updates delivered to your favorite social media channel.

-  **Twitter**  
Follow the GEF
-  **Instagram**  
Follow the GEF
-  **LinkedIn**  
Follow the GEF
-  **Facebook**  
Follow the GEF
-  **Visit us online**  
[www.thegef.org](http://www.thegef.org)





# GEF COMMUNICATIONS – NEWSLETTER



## COUNCIL HIGHLIGHTS



### GEF Council approves \$1.1B for international action

The expansive work program will catalyze action on biodiversity, climate change, nature renewal, and pollution control. Members also met for the first time as Council of the new Global Biodiversity Framework Fund. [Read more >>](#)



### GEF deploys high-impact climate adaptation funding

Government representatives endorsed \$203 million for 21 climate change adaptation projects funded by the Least Developed Countries Fund (LDCF) and Special Climate Change Fund (SCCF). [Read more >>](#)



### GEF Monthly Newsletter

Highlights from investment and collaboration for the environm...

📅 Monthly newsletter

32,438 subscribers

✓ Subscribed



## February 2024: Growing momentum for biodiversity



### Global Environment Facility

100,569 followers

✓ Following



# GEF COMMUNICATIONS – BRANDING

## Brand Guidelines



GEF Full Name with Tagline





# Partnership Communications Strategy



# PARTNERSHIP COMMUNICATIONS STRATEGY

## VISION

- Strategic communications can **raise the visibility of the GEF and its results.**
- The GEF Communications Collective is a network of communicators that can **boost the quality and cohesiveness of communications.**
- Coordinating our efforts, we transmit a more **impactful and complete message** about the GEF.
- With more cohesion we can raise the quality of **communications around individual projects and programs.**





# PARTNERSHIP COMMUNICATIONS STRATEGY

## OBJECTIVES

- Promote the **GEF's identity and value addition.**
- **Show the benefits** of working with the GEF.
- **Provide information on effectiveness and impact** and offer avenues and channels for **amplified visibility.**



# PARTNERSHIP COMMUNICATIONS STRATEGY

## OBJECTIVES

- Recognize and **elevate the voices of champions and changemakers** working with the GEF, from the local to national and international levels.
- Support the **production of clear and joined-up communication about GEF-funded work.**
- Increase the **quality and impact of project-level and program-level communications**, ensuring that each project can align and contribute to the GEF's global communication narrative, footprint, and impact.



# Communication and Visibility Policy



# POLICY ON COMMUNICATION AND VISIBILITY

## WHAT:

- Guiding principles and mandatory requirements for recipients of GEF funding on **how and when to describe the GEF's role and contribution** to project and program outcomes.

## WHO IT APPLIES TO:

- The **GEF Secretariat, GEF Agencies, and other entities receiving GEF financing**, who are responsible for publicizing their work and include references to support received from the GEF.



# POLICY ON COMMUNICATION AND VISIBILITY

## WHY:

- **Strong, clear, and consistent communications strategies** across the GEF Partnership are vital to ensure that donors, recipient countries, and other stakeholders see the **value of GEF-funded activities** and initiatives.
- Creating a more coordinated approach at the global, Agency, program, and project level will help **communicate GEF's impacts and results** better.



Thank you!

Q&A