

GEF's Scientific and Technical Advisory Panel

Tom Hammond,
STAP Secretary



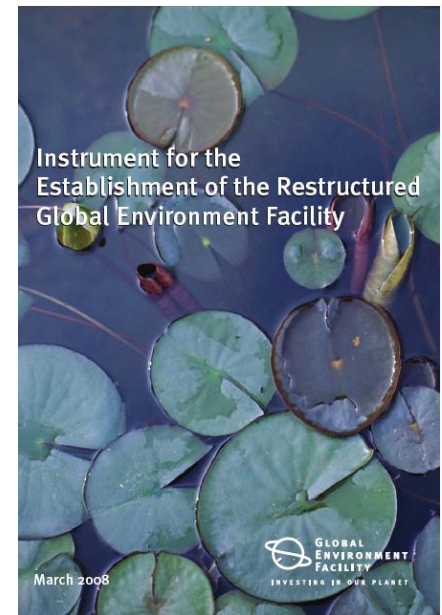
Scientific and Technical Advisory Panel
to the Global Environment Facility

Background

The Scientific and Technical Advisory Panel (STAP) is administered by the United Nations Environment Programme (UNEP) as an advisory body to the GEF.

The GEF Instrument, revised in November 2007, establishes the mandate for STAP

The STAP Terms of Reference (2007) provides detail on how the Panel operates



Scientific and Technical Advisory Panel to the
Global Environment Facility

Increasing effectiveness



Enhancing the Impact of the Scientific and Technical Advisory Panel



Protected Area—key assets for sustainable forest management (Hain Thau, Laos)



STAP reviews impacts of Climate Change on Small Island Developing States and possible GEF responses

A proposal from UNEP in cooperation with The Scientific and Technical Advisory Panel (STAP)

June 2007

- In 2007 STAP underwent major reforms approved by the GEF Council in June 2007
 - Reduction of the Panel from 15 to 6 members
 - Improved individual accountability of members
 - Strengthening of the STAP Secretariat
 - Emphasis on a globally representative network of expertise
 - Early engagement in Project Cycle



Scientific and Technical Advisory Panel to the
Global Environment Facility

The Panel

Present composition – July 2010 to June 2011



Thomas E. Lovejoy, Chair



**Meryl J. Williams
Co-Chair , IW**



**N.H. Ravindranath
Climate Change**



**Sandra Diaz
Biodiversity**



**Henk Bouwman
Chemicals & POPs**



**Nteranya Sanginga
Land Degradation**

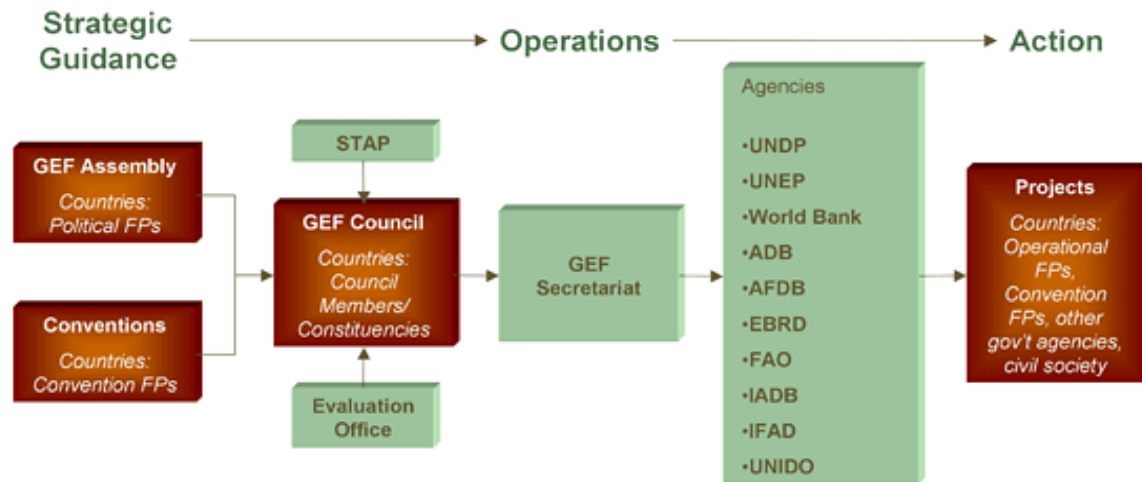


**Michael Stocking
Special Advisor
to the Chair**

Overall Role

The Panel of appointed experts, although supported by UNEP, is an independent body which advises the GEF Council.

STAP's advisory role encompasses strategic and operational matters in partnership with the GEF Agencies and GEF Secretariat.



Source: Country Support Program website

Operational Advice

Agencies – Project Development

- UNDP
- World Bank
- UNEP
- ADB
- AFDB
- EBRD
- FAO
- IADB
- IFAD
- UNIDO

GEF Secretariat

- Focal Area Strategies
- Knowledge Mgt
- Project Cycle

Evaluation Office

- Impact evaluations
- Evaluation approaches



Operational/Programmatic Advice

Collectively, STAP advises on **cross-cutting thematic areas**, such as adaptation to climate change, sustainable forest management, and chemicals management.

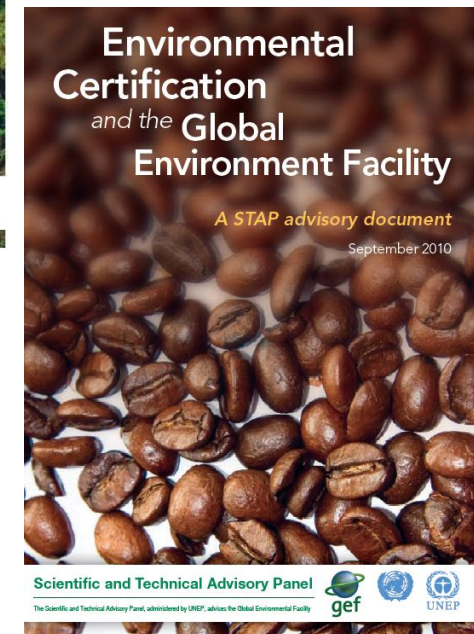
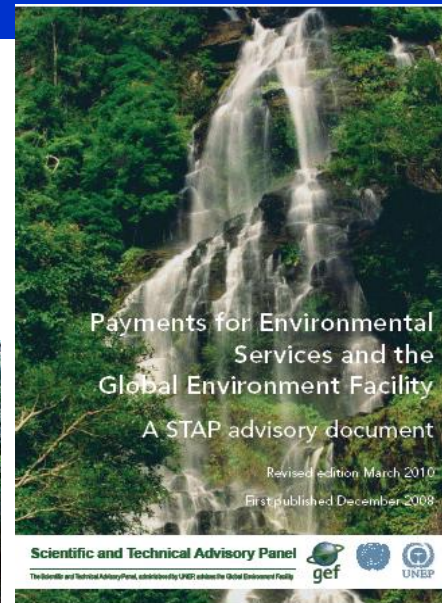
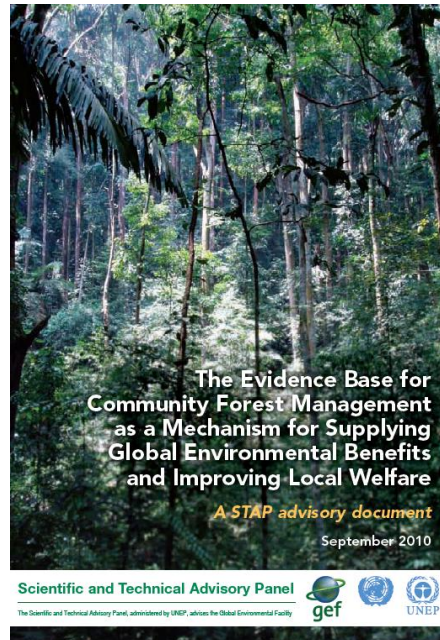
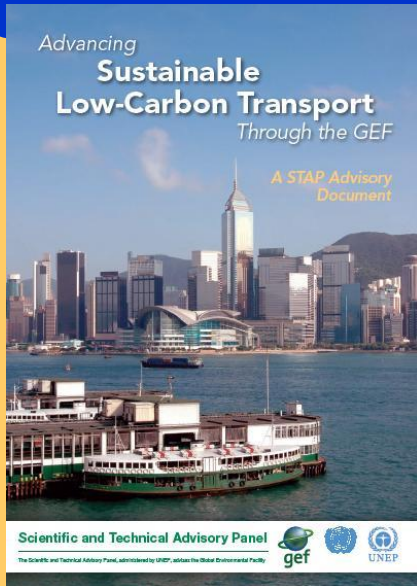
- *Enhancing climate resilience in GEF Projects*
 - *The role of research in the GEF Program*
- *Advice on operationalizing focal area set asides*

Strategic Advice

- Assessments of common programmatic approaches within the GEF Program
 - e.g. Advisory papers series
- STAP actively collaborates with all GEF bodies to develop appropriate responses to complex, cross-cutting challenges within GEF's mandate
 - e.g. Sustainable land use management
- Emerging issues outside existing agreements and mechanisms
 - e.g. the imbalance of the nitrogen/phosphorus cycles,



Recent Advisory Products



<http://www.unep.org/stap/>



Scientific and Technical Advisory Panel to the
Global Environment Facility

Cooperation with Conventions

Externally, STAP interacts in a complementary manner with the scientific and technical bodies of:



– the Convention on Biological Diversity,



– the Framework Convention on Climate Change,



– the Convention to Combat Desertification,



– the Stockholm Convention on Persistent Organic Pollutants, and



– the Montreal Protocol on Substances that Deplete the Ozone Layer



Scientific and Technical Advisory Panel to the
Global Environment Facility

Contact information

- Thomas E. Lovejoy, Chair
lovejoy@heinzctr.org
- Tom Hammond, STAP
Secretary –
thomas.hammond@unep.org
- STAP website –
www.unep.org/stap
- GEF website –
www.thegef.org

