

MAJOR REGIONAL FLAGSHIP INITIATIVES

REDUCING BIODIVERSITY LOSS AT CROSS-BORDER SITES IN EAST AFRICA

Total GEF Grant: US\$12.6 million; Co-financing: US\$5.2 million
 GEF Agencies: UNDP/GEF; Implementation: 1996 – 2003

This initiative was designed to help catalyze biodiversity conservation in the East Africa Region. The project engaged both traditional local and conventional perspectives on a range of activities to create an enabling environment for safeguarding biodiversity. As a result, there was good vertical integration of conservation concerns into policy and planning processes, including appreciation of the value of forests by policymakers and directors of ministries of finance and planning. In pastoral communities, the project also enhanced development and use of the strong link between catchment forests and the availability of water in order to promote forest conservation.

STRATEGIC PROGRAM IN WEST AFRICA – ENERGY COMPONENT

Total GEF Grant: US\$36 million; Co-financing: US\$96.5 million
 GEF Agencies: The World Bank, UNDP, UNEP and UNIDO; Implementation: 2008 – 2015

The program includes 22 projects designed to address the diverse nature of energy needs in West Africa with projects ranging from large scale urban transport to mini-grid systems for isolated rural areas. The program covers a total of 18 countries in the region: Benin, Burkina Faso, Burundi, Cape Verde, Cote d'Ivoire, Chad, Gambia, Ghana, Guinea, Guinea Bissau, Liberia, Mali, Mauritania, Niger, Nigeria, Senegal, Sierra Leone, and Togo. The largest project in the program is the World Bank implemented project Nigeria Urban Transport. Several of the UNIDO implemented projects focus on renewable energy powered mini-grids in rural areas for productive use in countries like Gambia, Cape Verde, Sierra Leone, Nigeria, Liberia, Guinea, Chad and Cote d'Ivoire.

TRANSBOUNDARY COOPERATION IN THE NIGER AND SENEGAL RIVER BASINS

TOTAL GEF GRANTS (UP TO 2011):
 Niger Basin: US\$13.0 million; Co-financing: US\$16.9 million;
 GEF Agencies: UNDP and World Bank; Implementation: 2004 – 2009;
 Senegal River Basin: US\$7.3 million; Co-financing: US\$9.3 million;
 GEF Agencies: UNDP and World Bank; Implementation: 2003 – 2008

The Niger and Senegal Basins are prime examples of the catalytic role of GEF International Water Focal Area support to transboundary cooperation among riparian states to balance competing water uses across sectors; fostering inclusive institutional mechanisms; and contributing to approval of larger investment plans in the river basins involving key productive sectors. E.g., in the Niger Basin the GEF project contributed to the Shared Vision Process and informed development decisions leading to the approval of the Basin 20-year Investment Program by the Heads of State, totaling US\$8 billion. In the Senegal Basin GEF support contributed to an inclusive institutional mechanism leading to the full inclusion of Guinea in the OMVS in 2006. The Senegal River Basin Water Charter is unique in taking account of sharing costs and benefits according to functions not volumes. Both projects also contributed greatly to improved environmental monitoring and awareness.

STRATEGIC INVESTMENT PROGRAM FOR SUSTAINABLE LAND MANAGEMENT IN SUB-SAHARAN AFRICA (SIP/TERRAFRICA)

Total GEF Grant: US\$140 million; Co-financing: US\$77.1 million
 GEF Agencies: The World Bank, ADB, IFAD, UNDP, and UNEP; Implementation: 2007 – 2015

The SIP/Terrafrica initiative aims to optimize natural resource use at the landscape level in Sub-Saharan African countries by integrating and implementing SLM across sectors, with knowledge, analytical, and policy support. This initiative is directly linked to Pillar 1 of the Comprehensive African Agricultural Development Program of the Africa Union, and reflect the shared vision of partners involved in the Terrafrica platform hosted by the NEPAD Planning and Coordination Agency. In addition to recipient countries, the partnership includes GEF Agencies, bilateral donors, and Civil Society Organizations, who together leveraged nearly US\$ 1 billion in co-financing.

AFRICA STOCKPILES PROGRAM

Total GEF Grant: US\$28 million; Co-financing: US\$44.1 million
 GEF Agencies: The World Bank, FAO; Implementation: 2005 – 2010

This program was designed as a partnership with seven African countries to eliminate inventoried and publicly held obsolete pesticide stocks and associated waste, and implement measures to reduce and prevent future related risks. Throughout the continent, an estimated 50,000 tons of obsolete pesticides were poorly stored, posing risks of environmental contamination and poisoning of people. The program helped to train personnel and strengthen institutions to address these threats in a systematic manner.

STRATEGIC PROGRAM FOR SUSTAINABLE FOREST MANAGEMENT IN THE CONGO BASIN

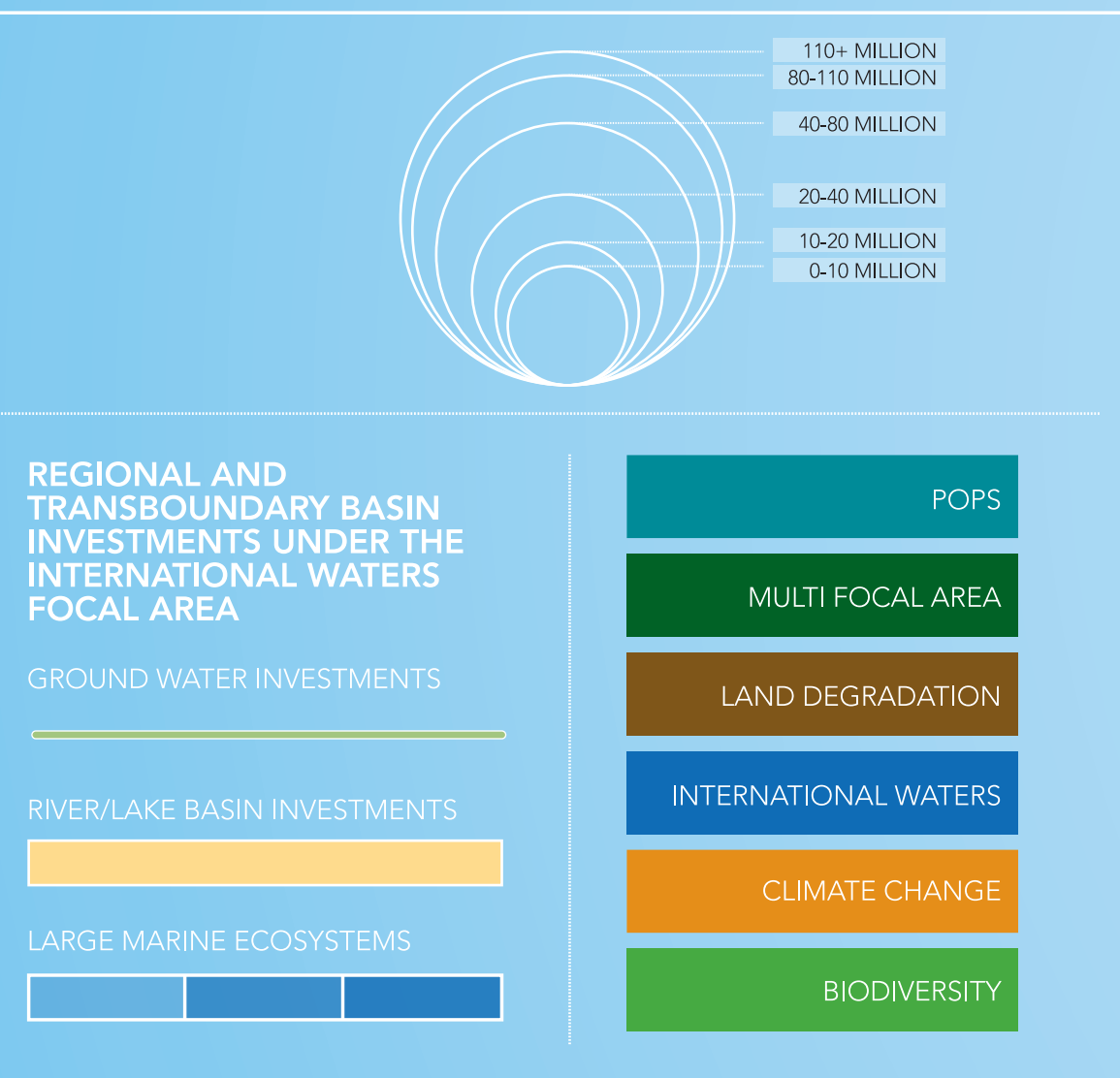
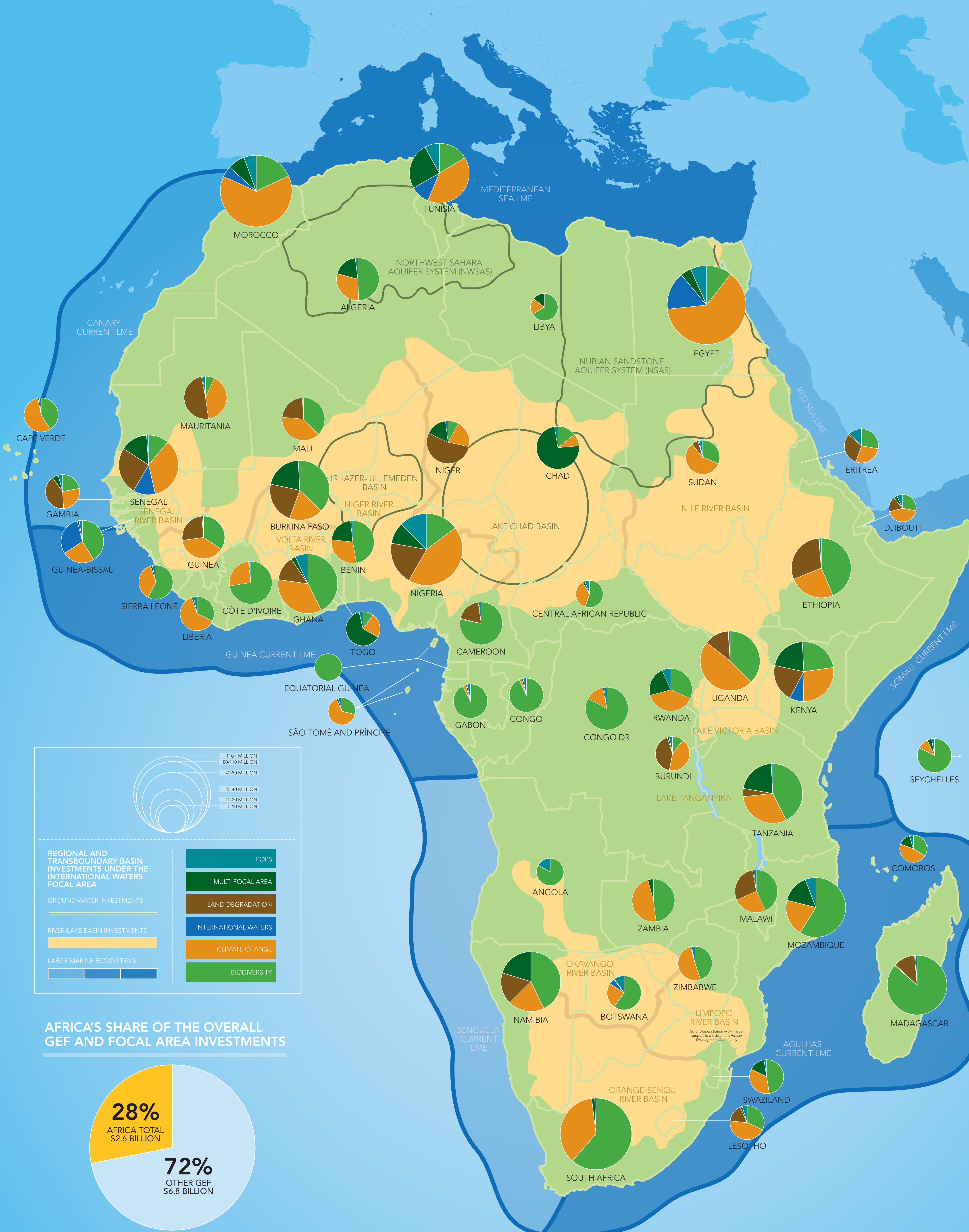
Total GEF Grant: US\$54.7 million; Co-financing: US\$145.9 million
 GEF Agencies: World Bank, ADB, FAO, UNDP, UNEP; Implementation: 2008 – 2015

The objective of this program is to strengthen sustainable management of forest ecosystems in the Congo Basin, which represent the world's second largest rainforest with 1.7 million km² across six countries. The initiative will support efforts of the countries to link high level political commitments to on-the-ground forest management interventions for safeguarding the ecosystem. The multi-focal area investment will foster integrated approaches for conservation of biodiversity, sustainable land management, and climate change mitigation.

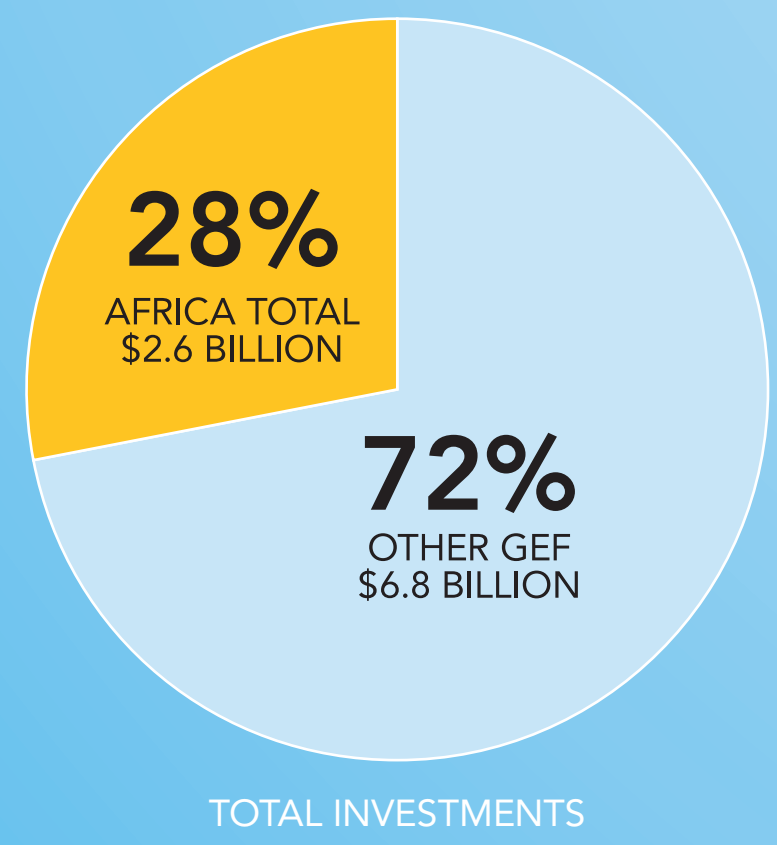
THE SAHEL AND WEST AFRICA PROGRAM IN SUPPORT OF THE GREAT GREEN WALL INITIATIVE

Total GEF Grant: US\$108 million; Co-financing: US\$1.7 billion;
 GEF Agency: The World Bank; Implementation: 2011 – 2017

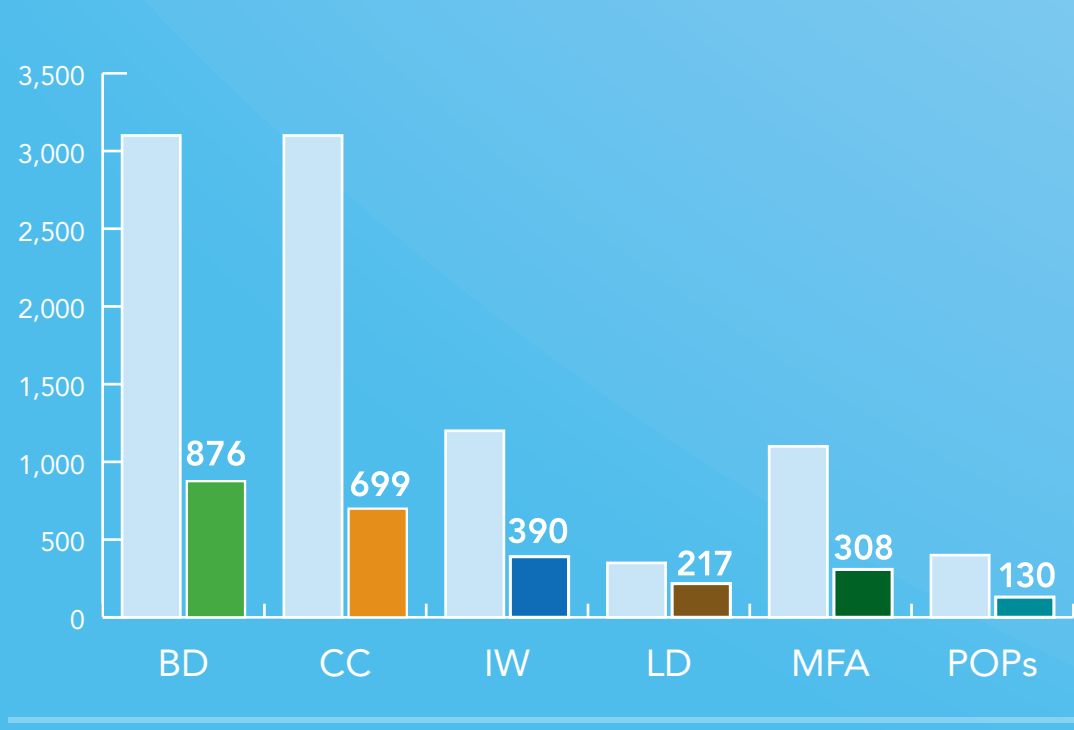
The initiative will support efforts by twelve countries to expand sustainable land and water management in targeted landscapes and in climate vulnerable areas in the Sahel and outlying ecosystems. Integrated approaches will be catalyzed to help secure ecosystem services and reduce vulnerability to Climate Change. The multi-trust fund investments cover a range of sectors including agriculture, food security, forestry, disaster risk management, rural development, and water resources management.



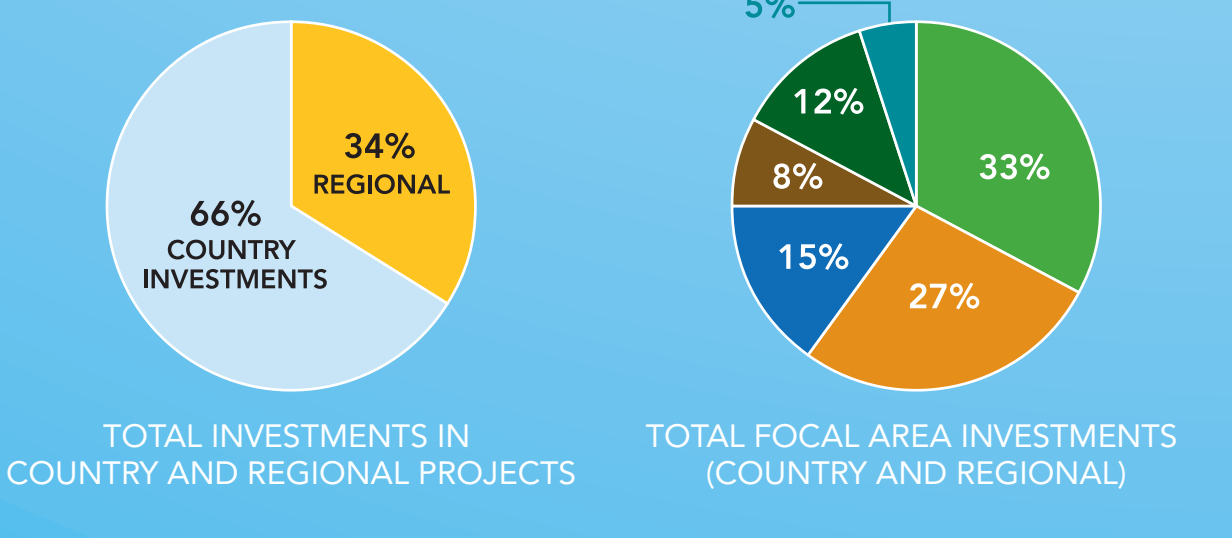
AFRICA'S SHARE OF THE OVERALL GEF AND FOCAL AREA INVESTMENTS



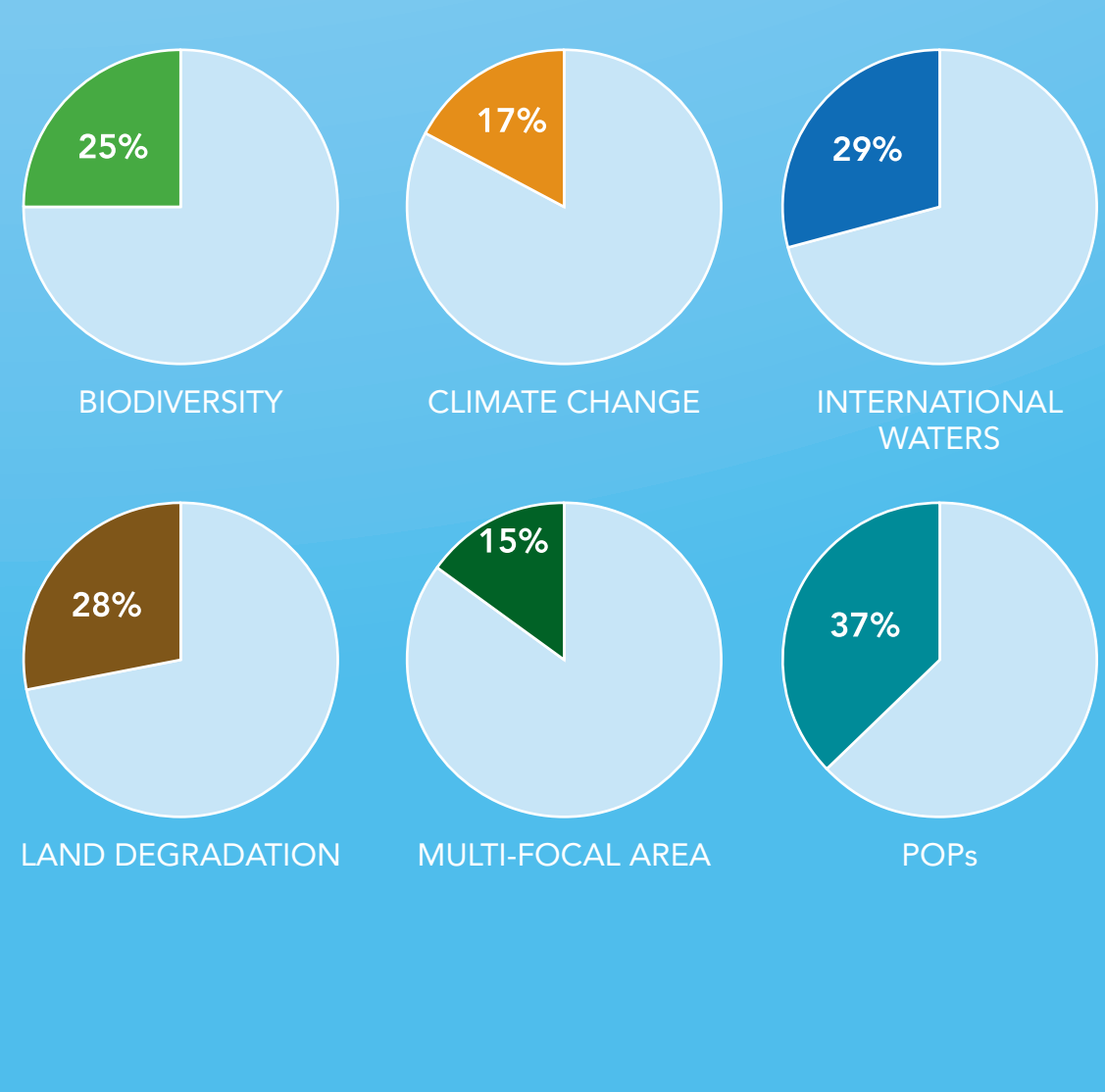
TRENDS IN GEF FOCAL AREA INVESTMENTS



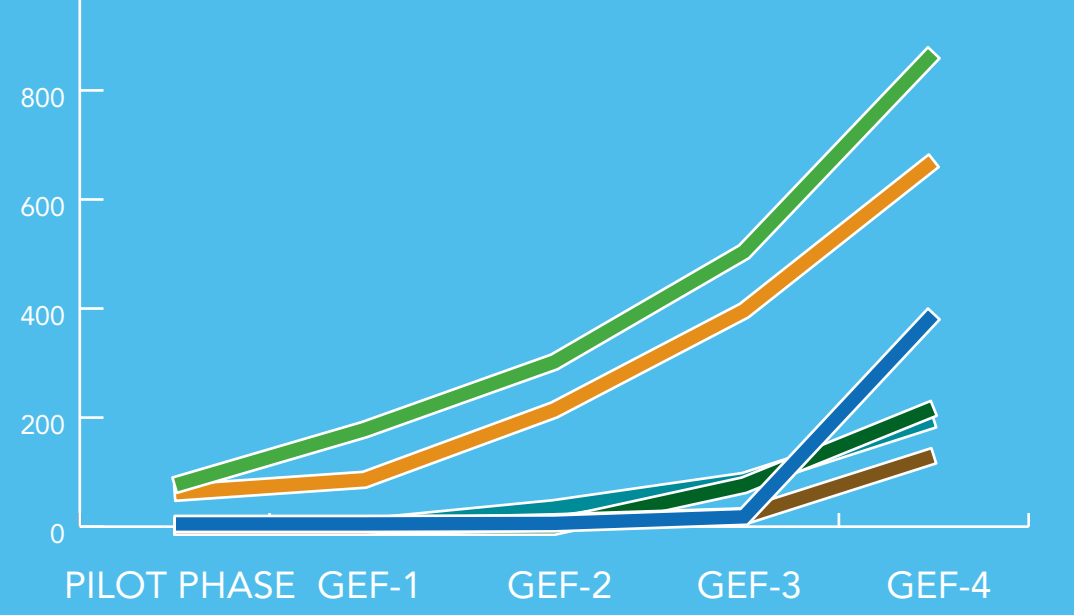
BREAKDOWN OF GEF INVESTMENTS BETWEEN COUNTRY AND REGIONAL INITIATIVES



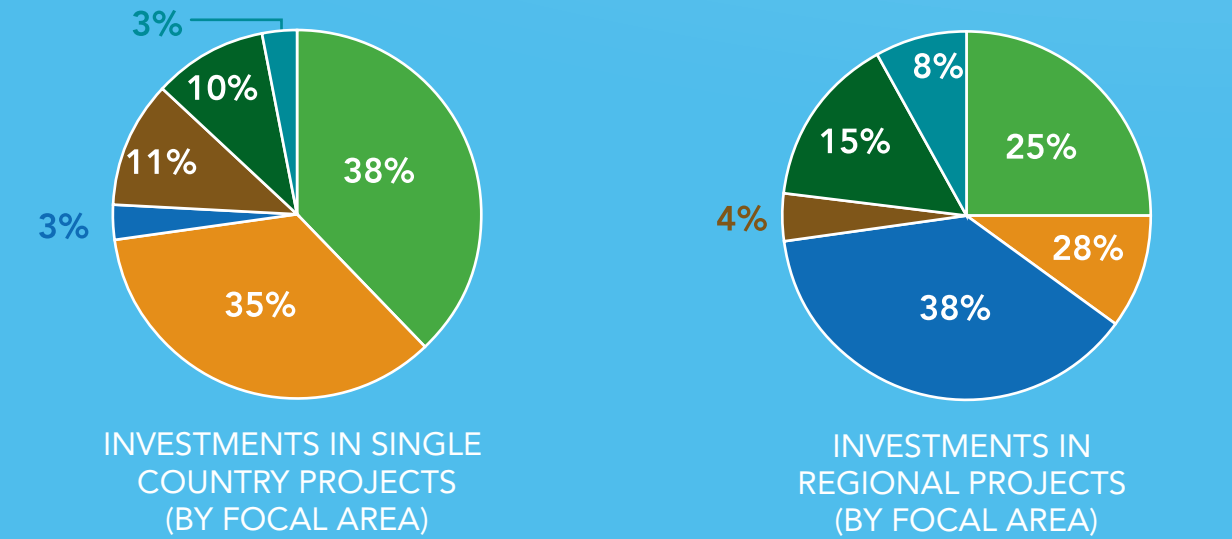
AFRICA'S SHARE OF REGIONAL INVESTMENTS IN THE GEF FOCAL AREAS



CUMULATIVE PROGRAMING OF FOCAL AREA RESOURCES



SHARE OF GEF FOCAL AREA INVESTMENTS IN COUNTRY AND REGIONAL INITIATIVES



The GEF and Africa

TWO DECADES OF PARTNERSHIP TO SAFEGUARD THE GLOBAL ENVIRONMENT 1991-2012